

2

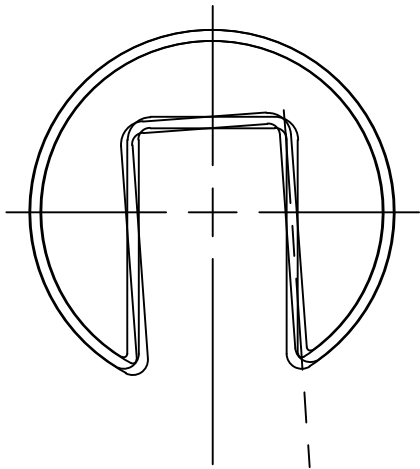
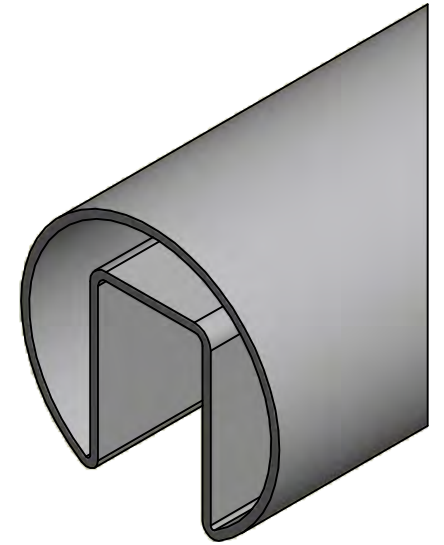
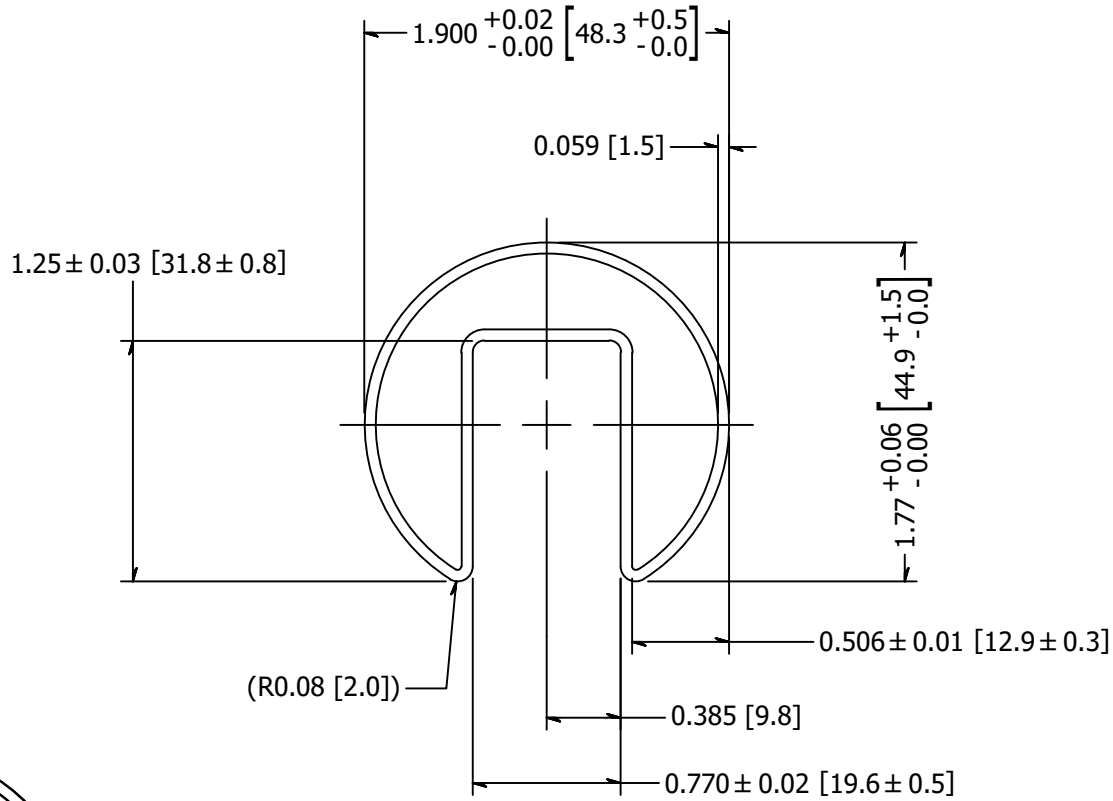
1

B


B

A

A



NOTE: MAXIMUM ALLOWABLE TWIST 0.5° PER FOOT WITH MAXIMUM 5.0° PER LENGTH

TOLERANCE  UNLESS OTHERWISE NOTED, TOLERANCES TO CONFORM TO ES.03.011	CUT LENGTH:	FINISH:	DESCRIPTION:	
		#4 Satin	1.90" OD w/ .059", .770" Wide x 1.25" Deep Slot, Type 316	
	DEVELOPED LENGTH:	WEIGHT:	MATERIAL:	MATERIAL DESC:
		35.24 lbmass	GR3192	1-1/2 Schd 5 Caprail 316 SS 1.90 OD .059 Wall 18 Ft.
TOOL NUMBER:		DATE:	REV:	 10600 W Brown Deer Rd Milwaukee, WI 53224 COLLABORATIVE METALWORKS <a href="http://www.wagnercompanies.com/">http://www.wagnercompanies.com/</a>
		4/28/2013	1	
		DRAWN BY:	PART NUMBER:	
		K. Bauserman	GR3192.4	

2

1

