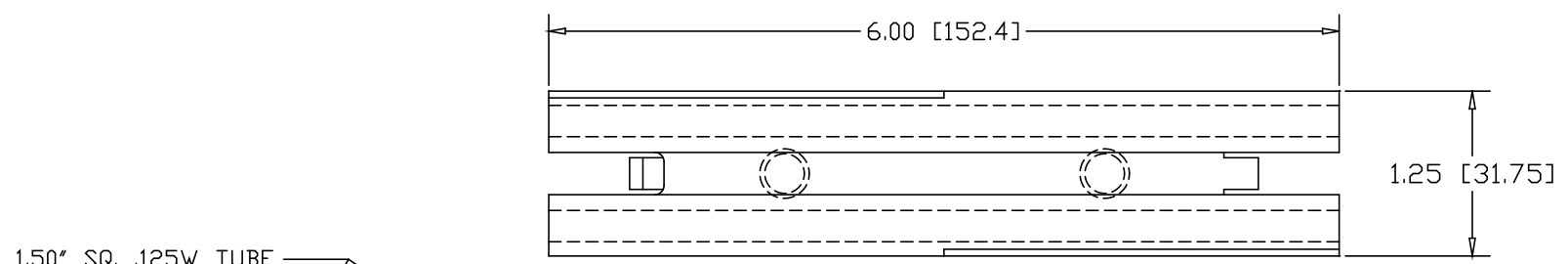
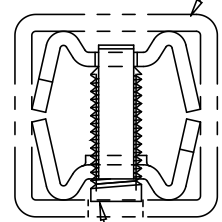


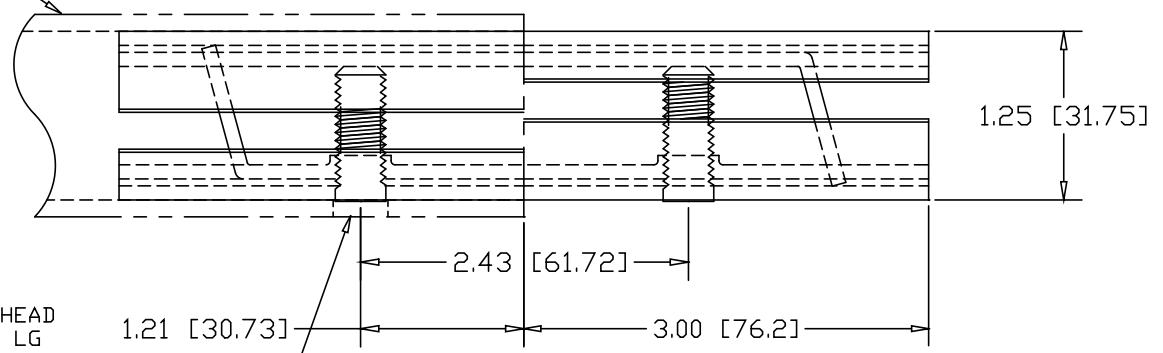
| REVISIONS | | | |
|-----------|-------------|------|----------|
| REV | DESCRIPTION | DATE | APPROVED |
| | | | |



1.50" SQ. .125W TUBE




3/8-16 SOCKET HEAD SET-SCREW X 1" LG



DRILL ϕ .406 HOLE
1.22" IN FROM END
OF EACH PIPE

INCHES [MILLIMETERS]

| ALTERNATE MATERIAL | PART NO. |
|--------------------------------------|----------|
| 12 GA. STEEL HOT DIP GALVANIZED | G3385-6 |
| 12 GA. STEEL ZINC PLATED | PL3385-6 |
| .090 (3003) ALUMINUM ASTM B209 | 3386-6 |
| .090 (304) STAINLESS STEEL ASTM A240 | 3387-6 |

| | | | |
|--|---|--------------------|----------------|
| PART NAME 1.50" SQ. .125W TUBE DOUBLE-LOCK SPLICE-LOCK 6" LONG | | | |
| MATERIAL 12 GA. HRP&D STEEL ASTM A569 | | | |
| DATE 9/28/01 |  | R & B WAGNER, INC. | |
| DRAWN BY JAH | | SIZE A | WEIGHT .75 LBS |
| FINISH MILL | | PART NUMBER 3385-6 | REV |