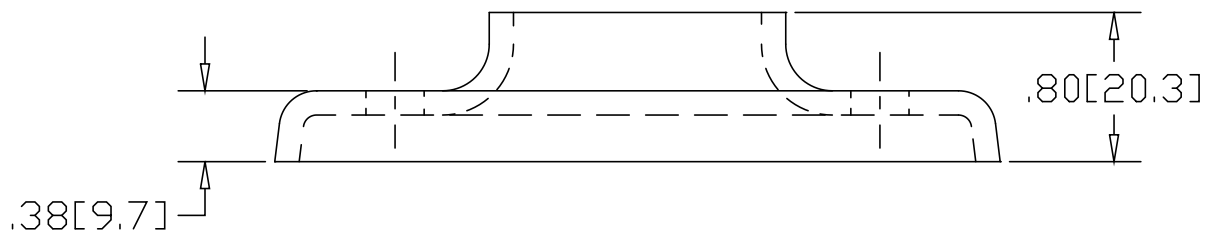
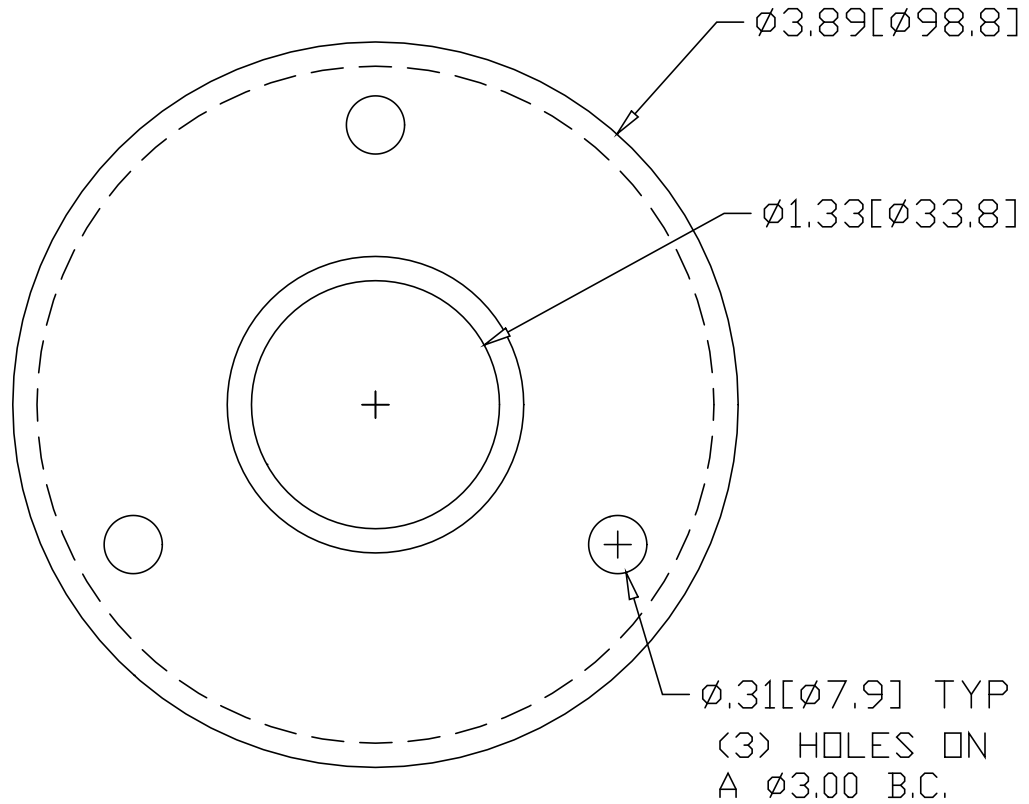


REV
SH
1419A
DWG NO


REVISIONS			
REV	DESCRIPTION	DATE	APPROVED



INCHES [MILLIMETERS]

*USE WITH ANCHOR PLATE
 #B1432 IN STEEL
 #PLB1432 ZINC PLATED STEEL
 #B1532 IN STAINLESS STEEL

ALTERNATE MATERIAL	PART NUMBER
.125 (3003) ALUMINUM ASTM B209	1459A
10 GA. (304) STAINLESS STEEL ASTM A240	1519A

PART NAME				1" PIPE HEAVY BASE FLANGE W/(3) HOLES	
MATERIAL				10 GA. HRP&D STEEL ASTM A569	
DATE	9/13/94	 R & B WAGNER, INC.			
DRAWN BY	RJF				
FINISH	MILL				
SIZE	A	WEIGHT	.50 LBS	PART NUMBER	1419A
				REV	