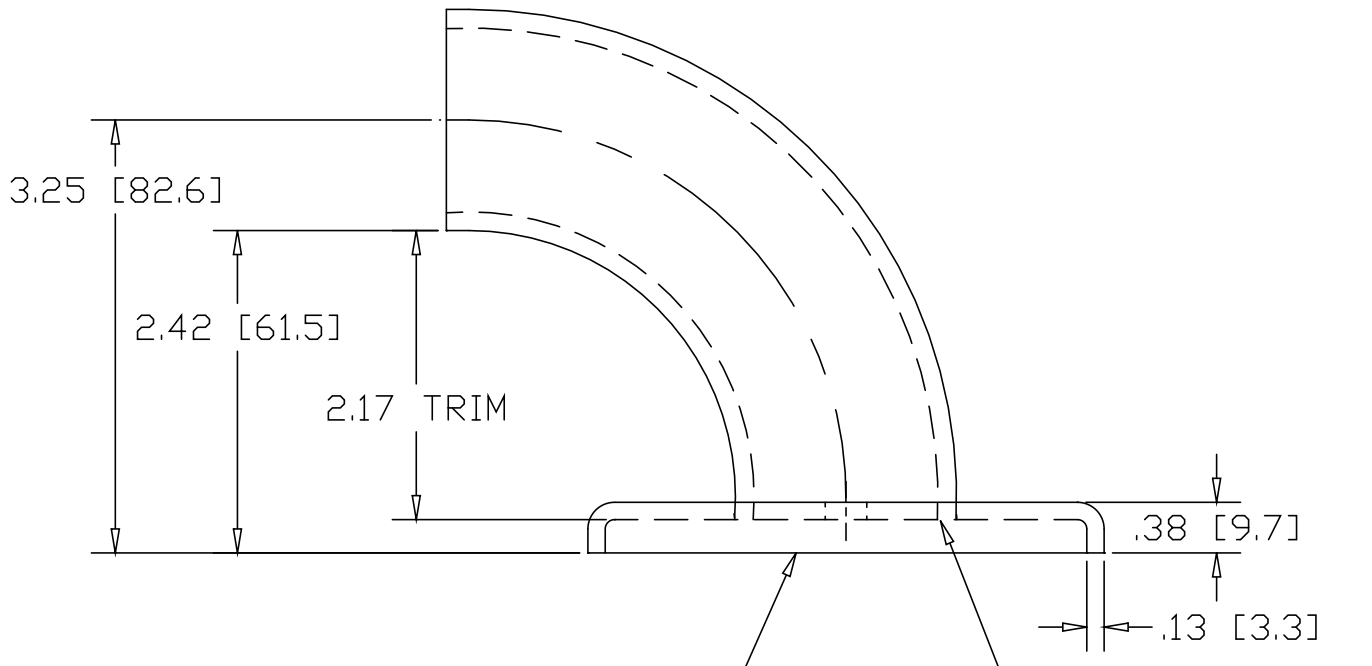
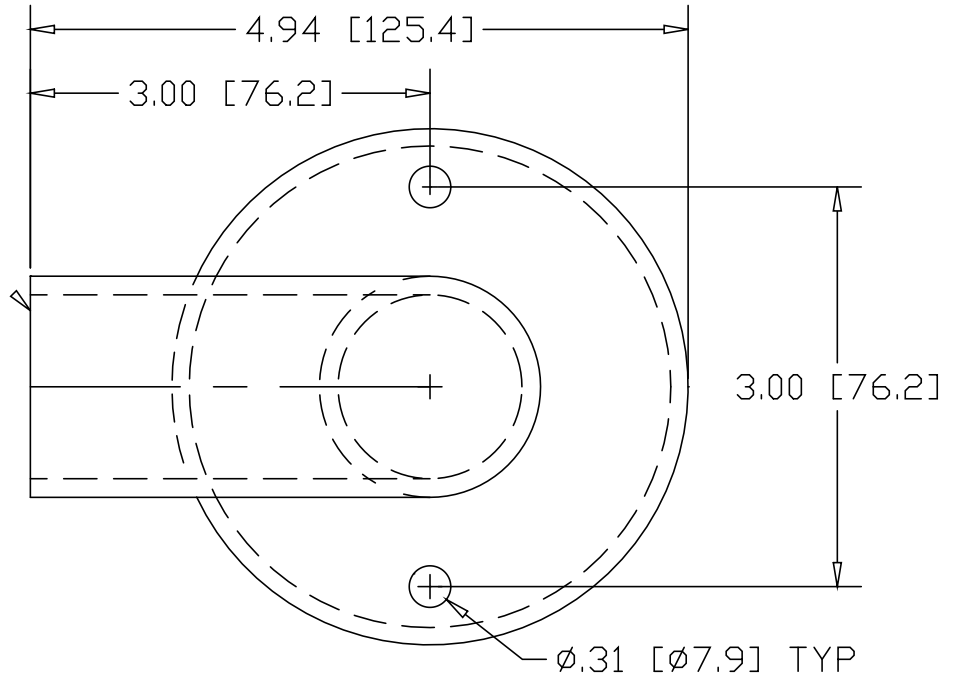


REV
SH
1160-2
DWG NO

REVISIONS			
REV	DESCRIPTION	DATE	APPROVED



R & B WAGNER
HEAVY FLUSH BASE
PIPE FLANGE #2527

WELD
1/2" LONG
(3) PLACES

INCHES [MILLIMETERS]

PART NAME 1-1/4" PIPE SIZE X 3.25CL WALL RETURN W/2 HOLES			
MATERIAL STEEL - ASTM A569			
DATE 1/10/07		THE WAGNER COMPANIES R & B WAGNER, INC. AND J. G. BRAUN CO.	
DRAWN BY RDC			
FINISH MILL			
SIZE A	WEIGHT	PART NUMBER 1160-2	REV