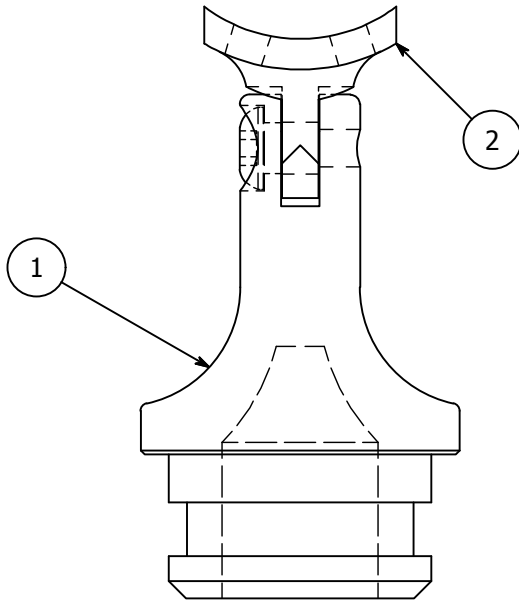
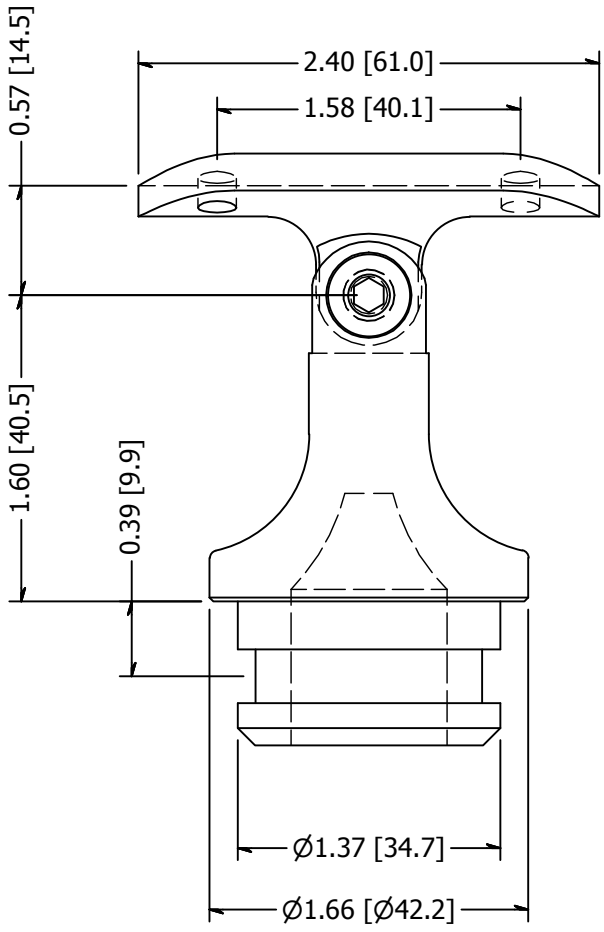


PARTS LIST			
ITEM	QTY	PART NUMBER	DESCRIPTION
1	1	LU31664PTAA	Post Top, SS, Cast, For 1-1/4 in Schd 40 Pipe (1.66 in Dia W/ .140 in Wall) Pivot
2	1	SS507	SADDLE, SWIVEL, CAST W/ HOLES



REVISION HISTORY		
REV	DESCRIPTION	DATE
1	Redesign of Post Top	9/9/2013
2	Remove Set Screw	7/14/2014

TOLERANCE UNLESS OTHERWISE NOTED, TOLERANCES TO CONFORM TO ES.03.011	MATERIAL: Stainless Steel	DESCRIPTION: BRACKET SS POST ADJUST 1.66 #4 SC40 POST W/PIVOT SADDLE	
	FINISH: #4	DATE: 7/14/2014	REV: 2
	WEIGHT: 0.61 lbmass	DRAWN BY: K. Turdo	
		ITEM NUMBER: LU328	


WAGNER™
 COLLABORATIVE METALWORKS
 10600 W Brown Deer Rd
 Milwaukee, WI 53224
<http://www.wagnercompanies.com/>