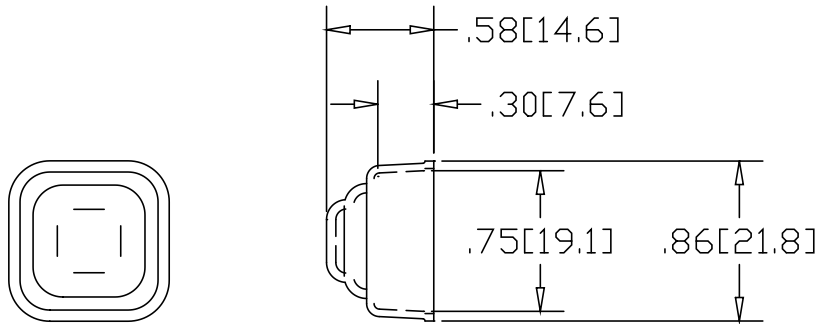



REV
SH
5174
DWG NO

| REVISIONS | | | |
|-----------|-------------|------|----------|
| REV | DESCRIPTION | DATE | APPROVED |



INCHES [MILLIMETERS]

| ALTERNATE MATERIAL | PART NUMBER |
|--------------------------------|-------------|
| .050 (3003) ALUMINUM ASTM B209 | 5175 |
| 18 GA. 304 STAINLESS STEEL | 5176 |

| | | | |
|--------------------------------------|---|------------------|-----|
| PART NAME .75" SQUARE NEWEL POST CAP | | | |
| MATERIAL 18 GA. CR STEEL ASTM A366 | | | |
| DATE 1/25/99 |  THE WAGNER COMPANIES R & B WAGNER, INC. AND J. G. BRAUN CO. | | |
| DRAWN BY RJF | | | |
| FINISH MILL | | | |
| SIZE A | WEIGHT .02 lbs | PART NUMBER 5174 | REV |