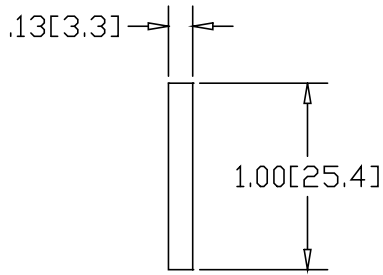
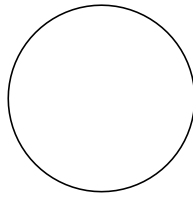
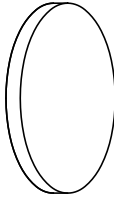



REV
SH
DWG NO
D001

| REVISIONS | | | |
|-----------|-------------|------|----------|
| REV | DESCRIPTION | DATE | APPROVED |



INCHES [MILLIMETERS]

| ALTERNATE MATERIAL | PART NUMBER |
|--|-------------|
| .125 (3003) ALUMINUM ASTM B209 | D002 |
| 10 GA. (304) STAINLESS STEEL ASTM A240 | D003 |
| .125 (260) BRASS ASTM B19,B36 | D004 |

| | | | | | | | |
|-----------|---------|-------------|-----|---|--|--|--|
| PART NAME | | | | 1.00" OD TUBE SIZE TYPE-D WELD-ON DISK | | | |
| MATERIAL | | | | 10 GA. HRP&D STEEL ASTM A569 | | | |
| DATE | | 10/11/96 | |  THE WAGNER COMPANIES R & B WAGNER, INC. AND J. G. BRAUN CO. | | | |
| DRAWN BY | | RJF | | | | | |
| FINISH | | MILL | | | | | |
| SIZE | WEIGHT | PART NUMBER | REV | | | | |
| A | .03 LBS | D001 | | | | | |