

REVISION HISTORY			
REV	DESCRIPTION	DATE	APPROVED
1	Revised Hole To Slot	11/20/2014	TLK
2	Revised To Metric	3/20/2015	TLK

<b>TOLERANCE</b>	MATERIAL:
X.X.....= ± .060	316 Stainless
X.XX.....= ± .030	FINISH:
X.XXX.....= ± .010	Satin Brushed
XX°.....= ± 1°	WEIGHT:
UNLESS OTHERWISE NOTED	1.11 lbmass

DESCRIPTION:	
Point Fitting, Stainless Steel, 30 mm Head, 2 Point, Flat Plate, Brushed Satin Finish, Grade 316, 0.50 Inch Glass	
DATE:	REV:
3/30/2015	2
DRAWN BY:	ITEM NUMBER:
T. Kolbach	LAFP30-2



2

1

B

B

A

A

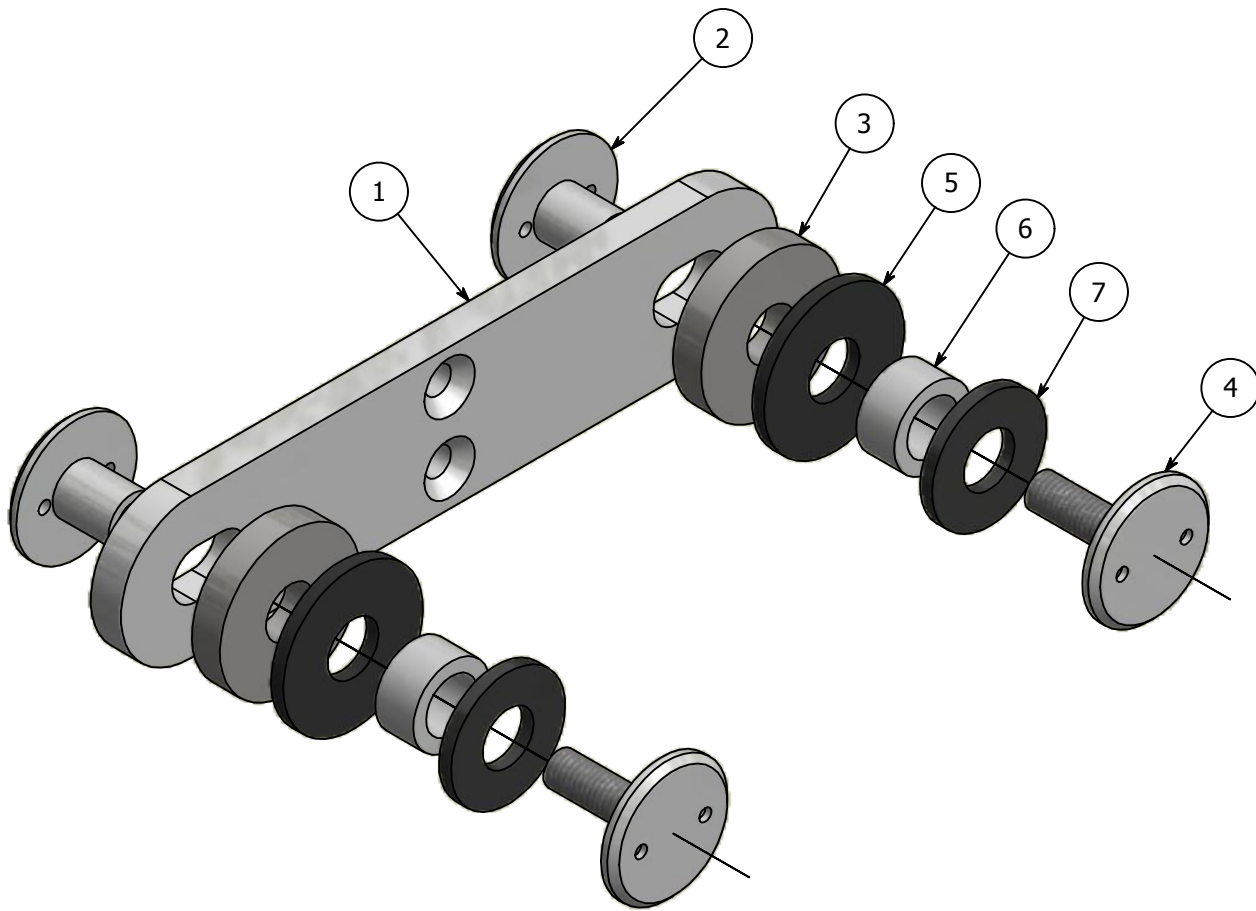
2

1



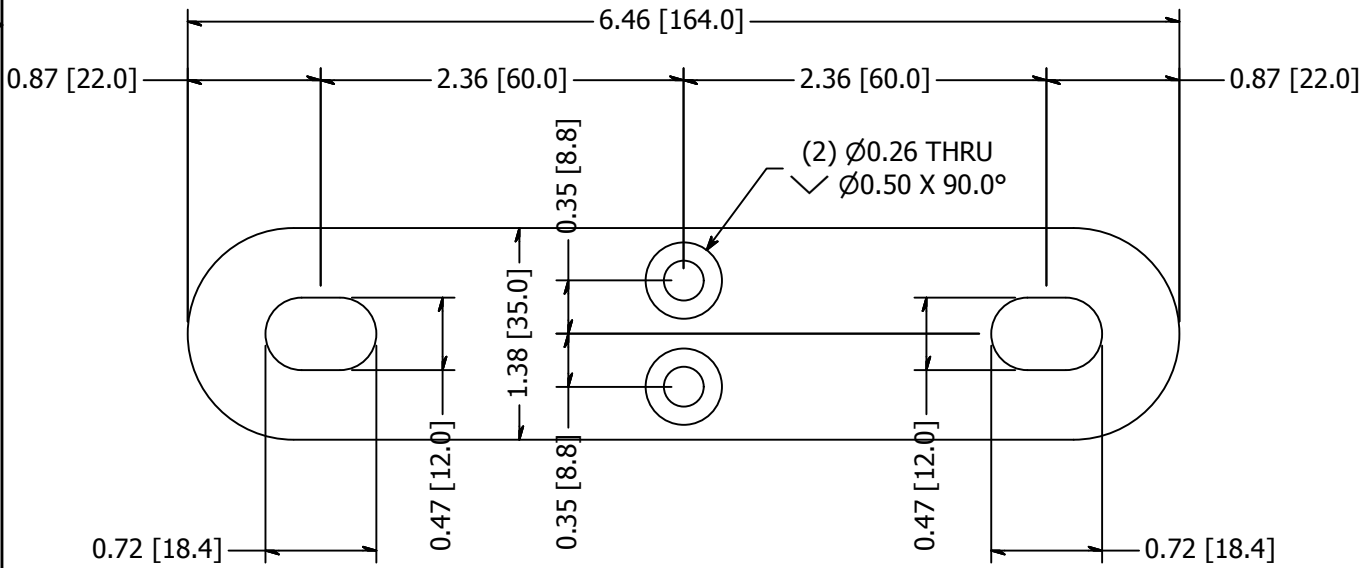
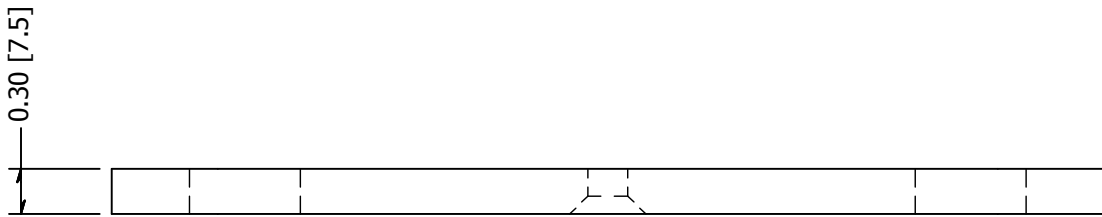
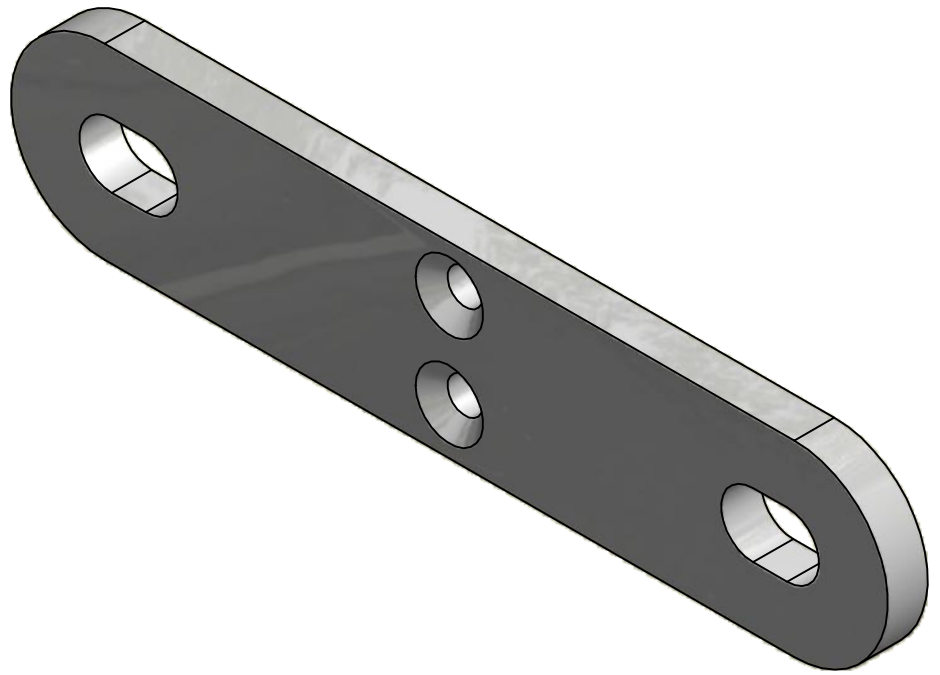
PARTS LIST

ITEM	QTY	PART NUMBER	DESCRIPTION
1	1	LXFP30-2A	Point Fitting, Stainless Steel, 1 Point, Flat Plate, Brushed Satin Finish, Grade 316
2	2	LXFP30-1B	Point Fitting, Stainless Steel, Cap Nut, Brushed Satin Finish, Grade 316
3	2	LXFP30-1C	Point Fitting, Stainless Steel, 7mm Washer, Brushed Satin Finish, Grade 316
4	2	LXFP30-1H	Point Fitting, Stainless Steel, Cap Screw, Brushed Satin Finish, Grade 316
5	2		Washer, Rubber, 34.9mm OD x 12.7mm ID x 3mm Thick
6	2		Spacer, Plastic, 19.1mm OD x 12.7mm ID x 9.5mm Long
7	2		Washer, Rubber, 28.5mm OD x 12.7mm ID x 3mm Thick



<b>TOLERANCE</b> X.X..... = ± .060 X.XX..... = ± .030 X.XXX..... = ± .010  XX°..... = ± 1°  UNLESS OTHERWISE NOTED	MATERIAL:	316 Stainless			DESCRIPTION:	Point Fitting, Stainless Steel, 30 mm Head, 2 Point, Flat Plate, Brushed Satin Finish, Grade 316, 0.50 Inch Glass	
	FINISH:	Satin Brushed		DATE:	3/30/2015	REV:	2
	WEIGHT:	1.11 lbmass		DRAWN BY:	T. Kolbach		
			ITEM NUMBER:		LXFP30-2		
						WAGNER COLLABORATIVE METAL WORKS	





# LXFP30-2A

<p><b>TOLERANCE</b></p> <p>X.X..... = ± .060</p> <p>X.XX..... = ± .030</p> <p>X.XXX..... = ± .010</p> <p>XX°..... = ± 1°</p> <p>UNLESS OTHERWISE NOTED</p>	<p>MATERIAL:</p> <p>316 Stainless</p>		<p>DESCRIPTION:</p> <p>Point Fitting, Stainless Steel, 1 Point, Flat Plate, Brushed Satin Finish, Grade 316</p>	
	<p>FINISH:</p> <p>Satin Brushed</p>	<p>DATE:</p> <p>3/30/2015</p>	<p>REV:</p> <p>2</p>	
	<p>WEIGHT:</p> <p>0.66 lbmass</p>	<p>DRAWN BY:</p> <p>T. Kolbach</p>		
	<p>ITEM NUMBER:</p> <p>LXFP30-2</p>			

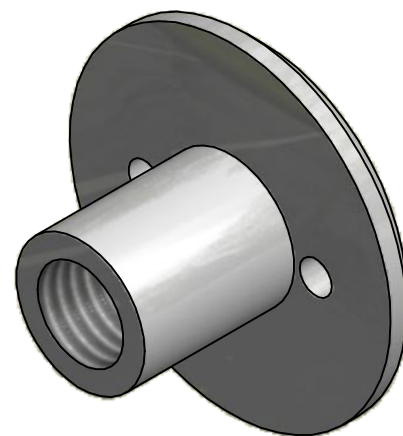
2

1

2

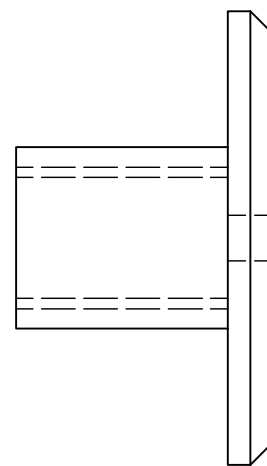
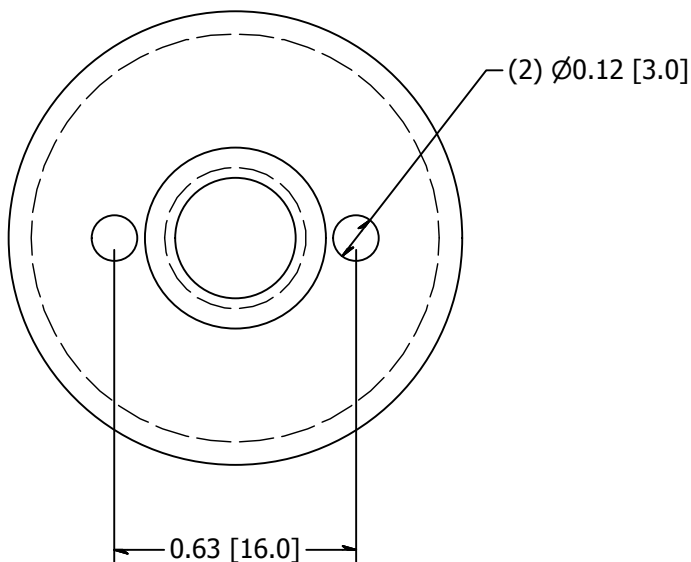
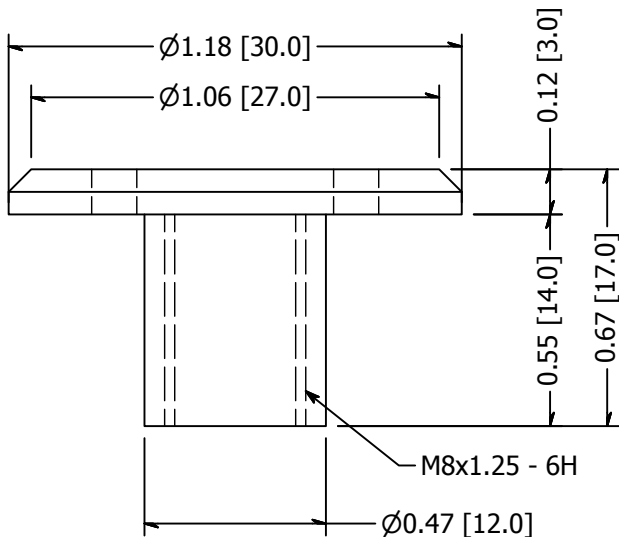


1



B

B



A

A

# **LXFP30-1B**

<b>TOLERANCE</b> X.X..... = $\pm .060$ X.XX..... = $\pm .030$ X.XXX..... = $\pm .010$  XX°..... = $\pm 1^\circ$  UNLESS OTHERWISE NOTED	MATERIAL: 316 Stainless	DESCRIPTION: Point Fitting, Stainless Steel, Cap Nut, Brushed Satin Finish, Grade 316	
	FINISH: Satin Brushed	DATE: 3/30/2015	REV: 2
	WEIGHT: 0.05 lbmass	DRAWN BY: T. Kolbach	
		ITEM NUMBER: LXFP30-2	



2



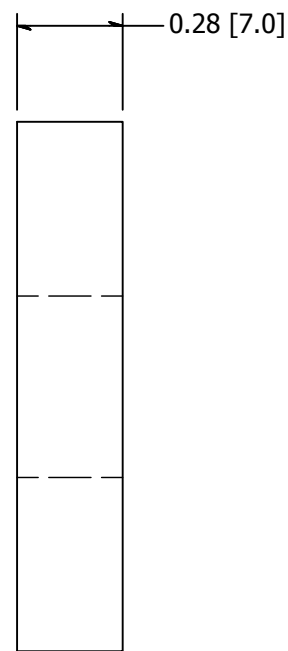
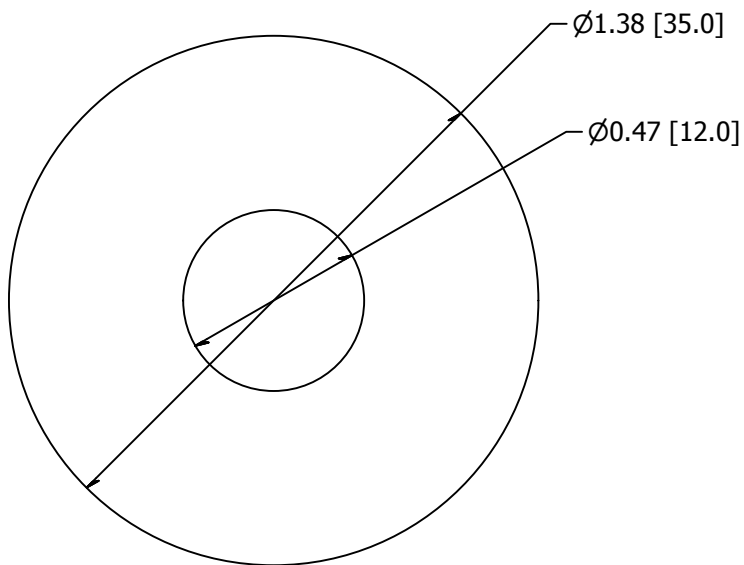
1

2

1

B

B



A

A

# LXFP30-1C

<b>TOLERANCE</b> X.X..... = ± .060 X.XX..... = ± .030 X.XXX..... = ± .010  XX°..... = ± 1°  UNLESS OTHERWISE NOTED	MATERIAL:	316 Stainless			DESCRIPTION:		Point Fitting, Stainless Steel, 7mm Washer, Brushed Satin Finish, Grade 316	
	FINISH:	Satin Brushed			DATE:	3/30/2015	REV:	2
	WEIGHT:	0.10 lbmass			DRAWN BY:	T. Kolbach		
					ITEM NUMBER:	LXFP30-2		



2

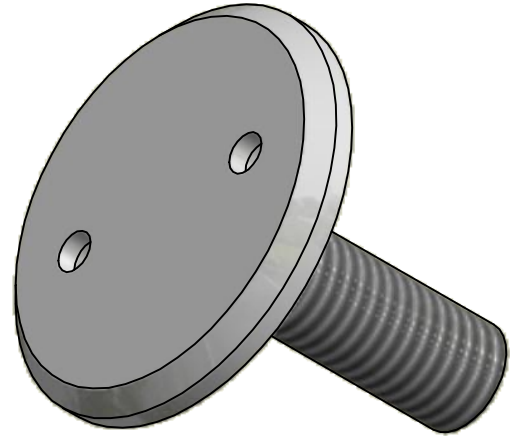
1

1

2

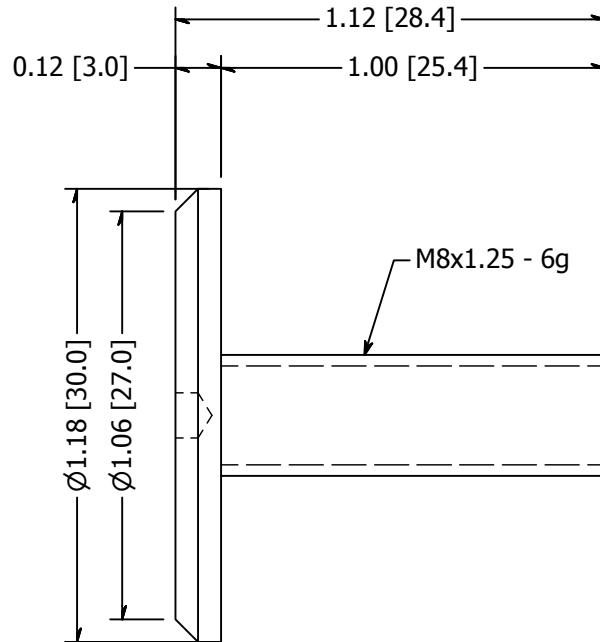
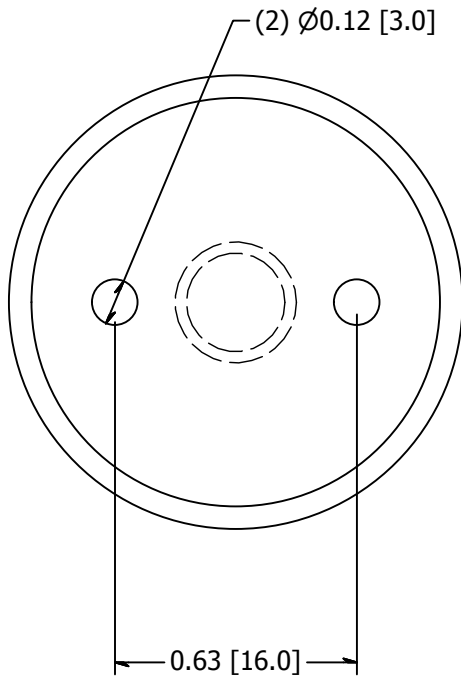


1



B

B



A

A

# **LAFP30-1H**

<b>TOLERANCE</b> X.X..... = $\pm .060$ X.XX..... = $\pm .030$ X.XXX..... = $\pm .010$  XX°..... = $\pm 1^\circ$  UNLESS OTHERWISE NOTED	MATERIAL:	316 Stainless			DESCRIPTION:	Point Fitting, Stainless Steel, Cap Screw, Brushed Satin Finish, Grade 316	
	FINISH:	Satin Brushed		DATE:	3/30/2015	REV:	2
	WEIGHT:	0.06 lbmass		DRAWN BY:	T. Kolbach		
					ITEM NUMBER:	LAFP30-2	



2



1