

2



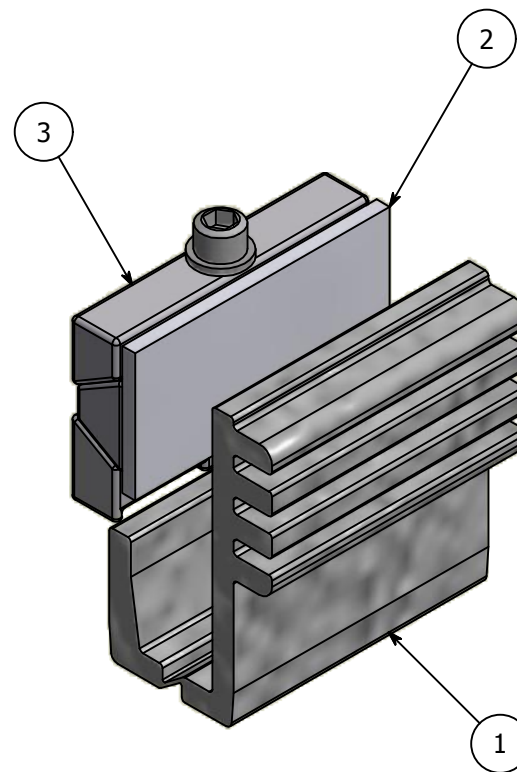
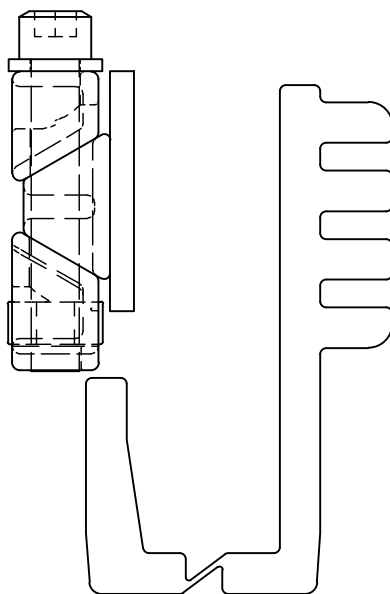
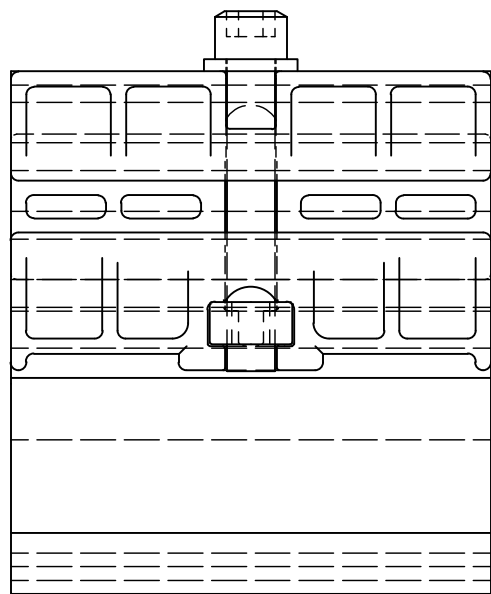
1

PARTS LIST

ITEM	QTY	PART NUMBER	DESCRIPTION
1	1	PGISO17	Light Gray Isolator, Plastic, Used with Panel Grip, 17.5mm Glass
2	1	PGISO.125	White Pad, Used with Panel Grip, 17.5mm Glass
3	1	N/A	Panel Grip Assembly

B

B



A

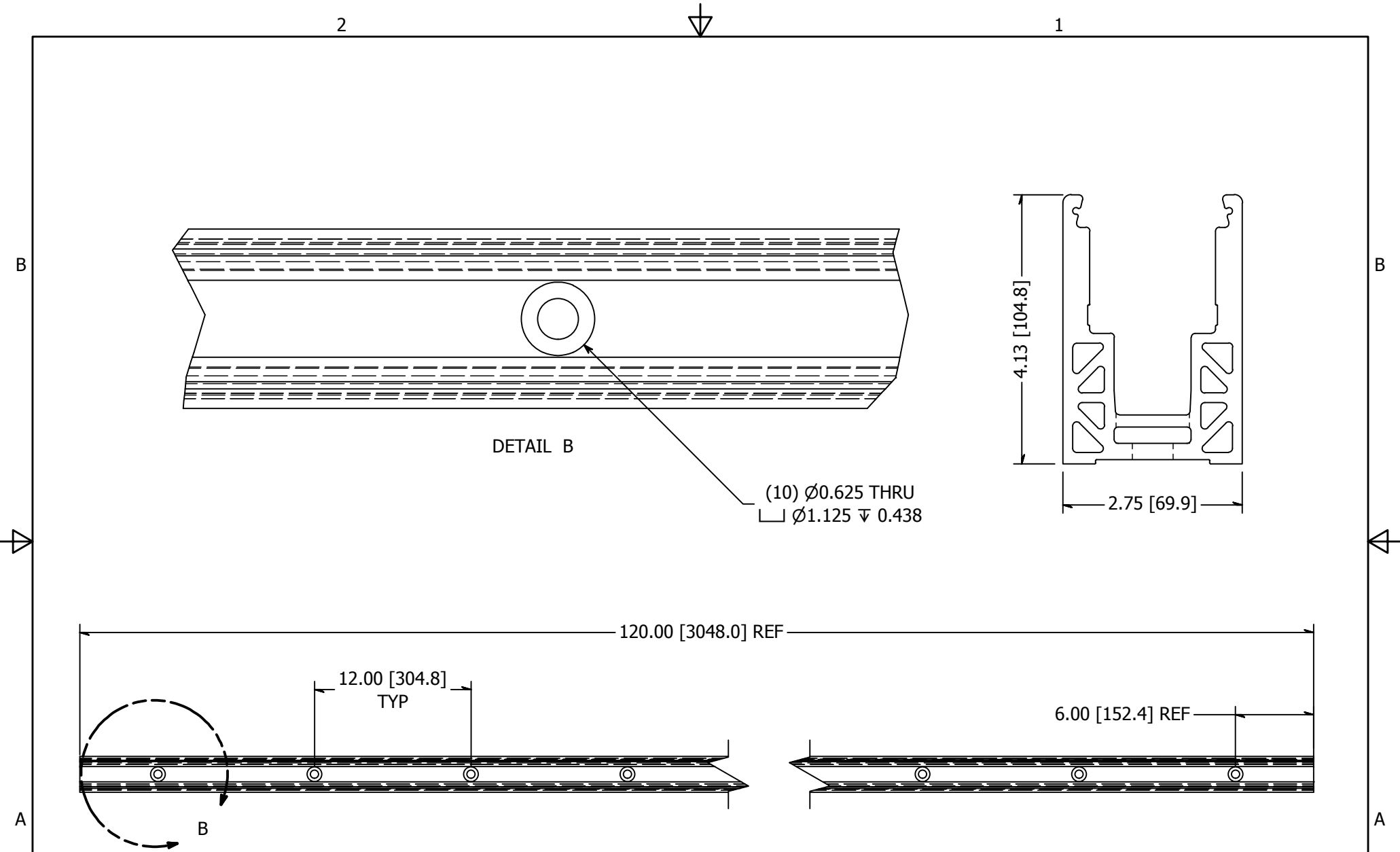
A


2



1

<b>TOLERANCE</b> X.X..... = ± .060 X.XX..... = ± .030 X.XXX..... = ± .010  XX°..... = ± 1°  UNLESS OTHERWISE NOTED	CUT LENGTH:	FINISH:	DESCRIPTION: PanelGrip 2 for 17.5 mm Glass, Dry Mount Mechanism, w/ Light Gray Isolator and White Pad	
	DEVELOPED LENGTH:	WEIGHT:	DATE:	MATERIAL DESC:
	TOOL NUMBER:	N/A	9/10/2015	1
			DRAWN BY: K. Bauserman	REV: 1
			PART NUMBER: PG2417S	 COLLABORATIVE METAL WORKS



<b>TOLERANCE</b> X.X..... = ± .060 X.XX..... = ± .030 X.XXX..... = ± .010  XX°..... = ± 1°  UNLESS OTHERWISE NOTED	CUT LENGTH:	FINISH:	DESCRIPTION: Shoe Moulding, AL, PanelGrip, 2-3/4 In Wide, 4-1/8 In High, Counterbored Holes		
		MILL	MATERIAL:	MATERIAL DESC:	
	DEVELOPED LENGTH:	WEIGHT:	DATE:	REV:	
	TOOL NUMBER:		DRAWN BY:		
			PART NUMBER:	 COLLABORATIVE METAL WORKS	

2

1