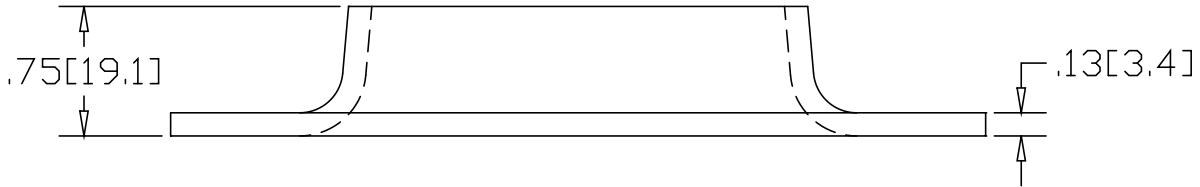
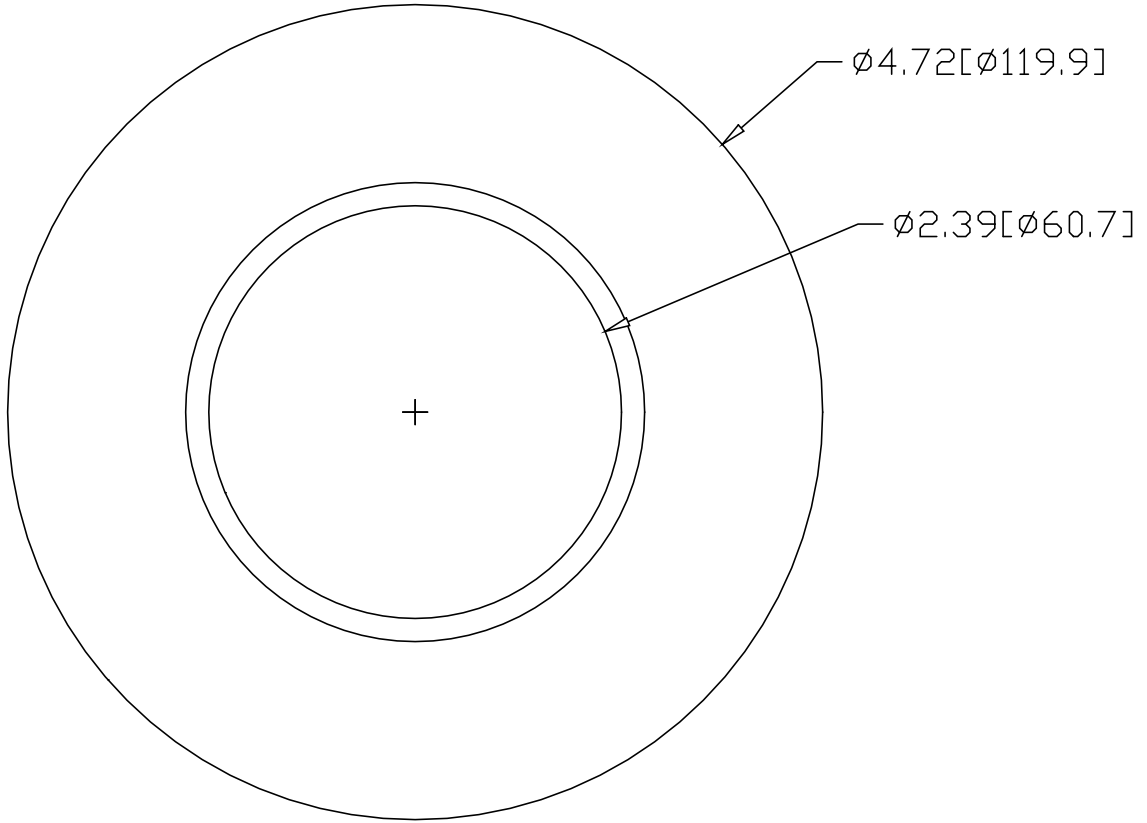



REV
SH
642
DWG NO

REVISIONS			
REV	DESCRIPTION	DATE	APPROVED



INCHES [MILLIMETERS]

ALTERNATE MATERIAL	PART NUMBER
.125 (3003) ALUMINUM ASTM B209	682
10 GA. (304) STAINLESS STEEL ASTM A240	725

PART NAME		2" FLAT BASE PIPE FLANGE		
MATERIAL		10 GA. HRP&D STEEL ASTM A-569		
DATE	1/8/99	 R & B WAGNER, INC.		
DRAWN BY	RJF			
FINISH	MILL			
SIZE	WEIGHT	PART NUMBER	REV	
A	.68 LBS	642		