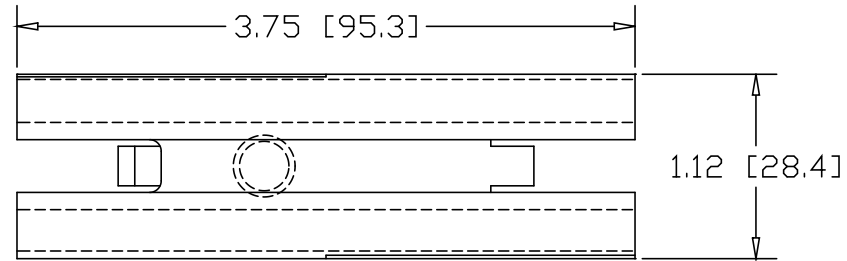
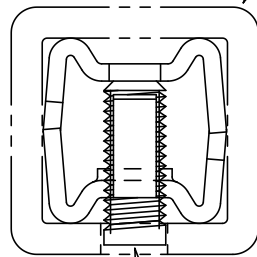


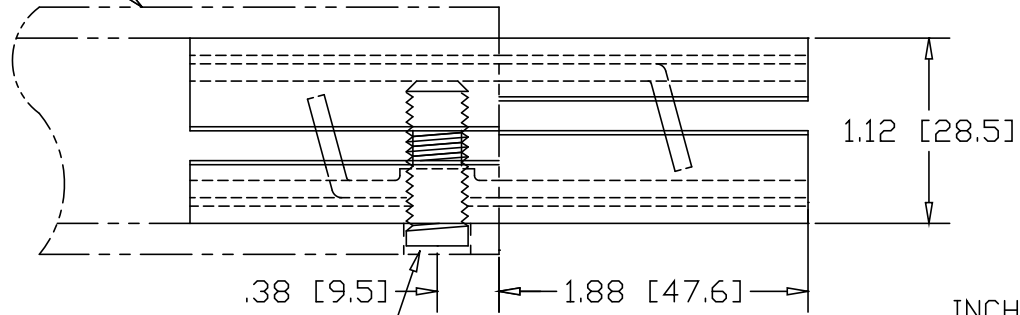
REVISIONS			
REV	DESCRIPTION	DATE	APPROVED



1.50" SQ X .188W TUBE




3/8-16 SOCKET HEAD SET-SCREW X 1" LG



INCHES [MILLIMETERS]

DRILL ϕ .406 HOLE
.38" IN FROM END

ALTERNATE MATERIAL	PART NO.
12 GA. STEEL HOT DIP GALVANIZED	G3341-2
12 GA. STEEL ZINC PLATED	PL3341-2
.090 (3003) ALUMINUM ASTM B209	3344-2
.090 (304) STAINLESS STEEL ASTM A240	3347-2

PART NAME				1.50" SQ. .188W TUBE SINGLE-LOCK SPLICE-LOCK			
MATERIAL				12 GA. HRP&D STEEL ASTM A569			
DATE		9/25/01		 R & B WAGNER, INC.			
DRAWN BY		JAH					
FINISH		MILL					
SIZE	WEIGHT	PART NUMBER	REV				
A	.43 LBS	3341-2					