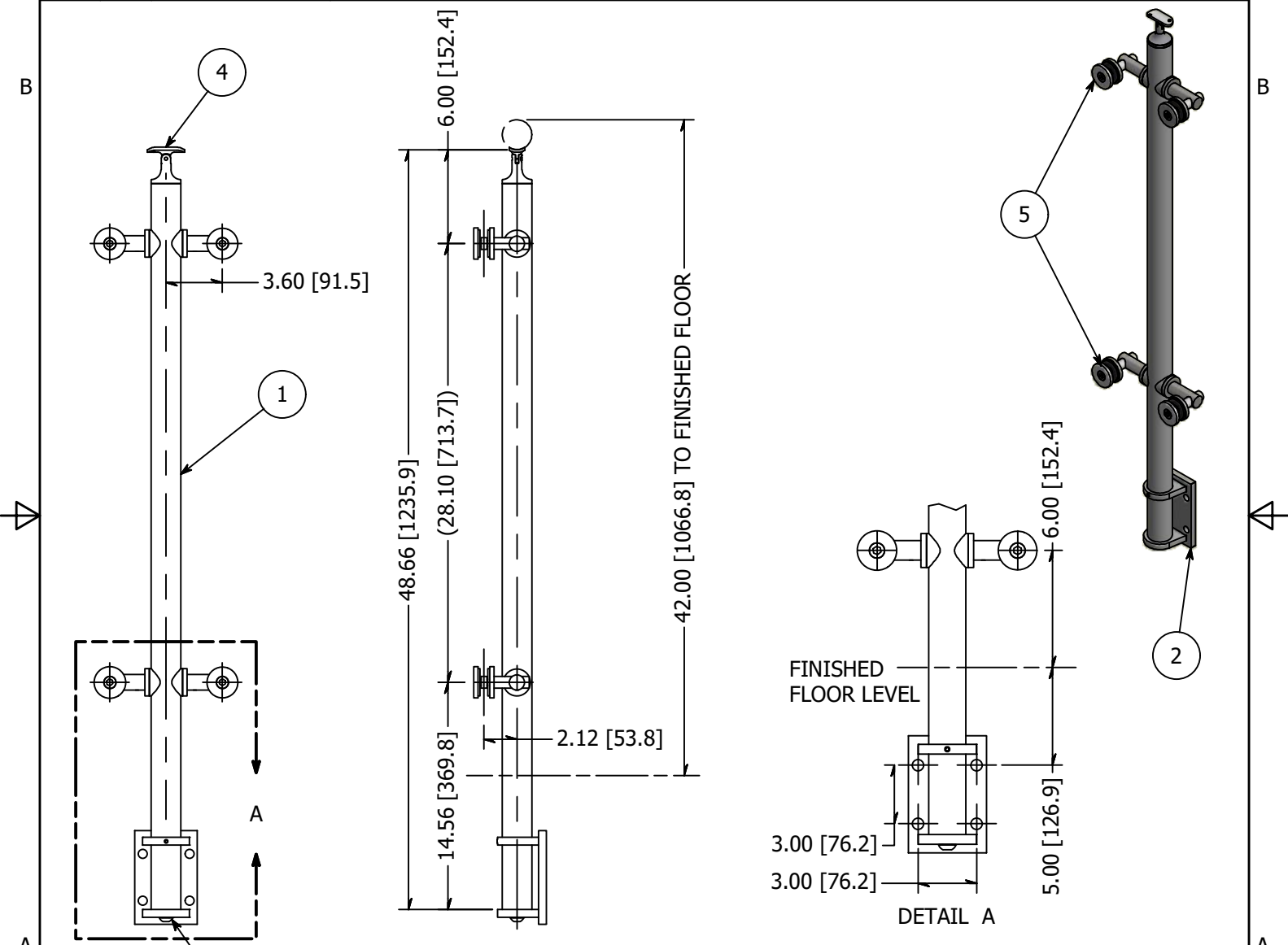


PARTS LIST

ITEM	QTY	PART NUMBER	DESCRIPTION
1	1	LG31942MFMA	Intermediate Post, Stainless Steel, 1-1/2 Inch Pipe (1.90 OD) Sch 40, 42 High, Brushed Satin Finish, Grade 316, Fascia Mnt, Assm
2	1	WR31900FA	ASSY, FASCIA MOUNT POST BRACKET
3	1	BAH3N1213-0200	SCREW SS 1/2-13 X 2.00 SOCKET BUTTON HEAD CAP SCREW CW
4	1	SS507	SADDLE, SWIVEL, CAST W/ HOLES
5	4	LXTB51-1	Point Fitting, Stainless Steel, 51 mm Head, 1 Point, Tubular Body, Brushed Satin Finish, Grade 316, 0.50 Inch Glass



REVISION HISTORY			
REV	DESCRIPTION	DATE	APPROVED
1	Revised to metric	3/24/2015	TLK
2	Revised LXTB51-1 to LX51FB	10/27/2015	KGB
3	Revised LX51FBS to LXTB51-1	8/23/2016	TLK
4	Drawing Update	6/25/2019	GPW
5	BAH3N1213-0200 WAS BAH3N3816-0200	7/24/2019	MKO

<b>TOLERANCE</b>  UNLESS OTHERWISE NOTED, TOLERANCES TO CONFORM TO ES.03.011	MATERIAL: 316 Stainless	DESCRIPTION: Intermediate Post, Stainless Steel, 1-1/2 Inch Pipe (1.90 OD) Sch 40, 42 High, Brushed Satin Finish, Grade 316, Fascia Mnt, 2 pt	
	FINISH: Satin Brushed	DATE: 8/16/2019	REV: 3
	WEIGHT: N/A	DRAWN BY: T. Kolbach	10600 W Brown Deer Rd Milwaukee, WI 53224 COLLABORATIVE METALWORKS <a href="http://www.wagnercompanies.com/">http://www.wagnercompanies.com/</a>
	ITEM NUMBER: LG31942CMFM.4		