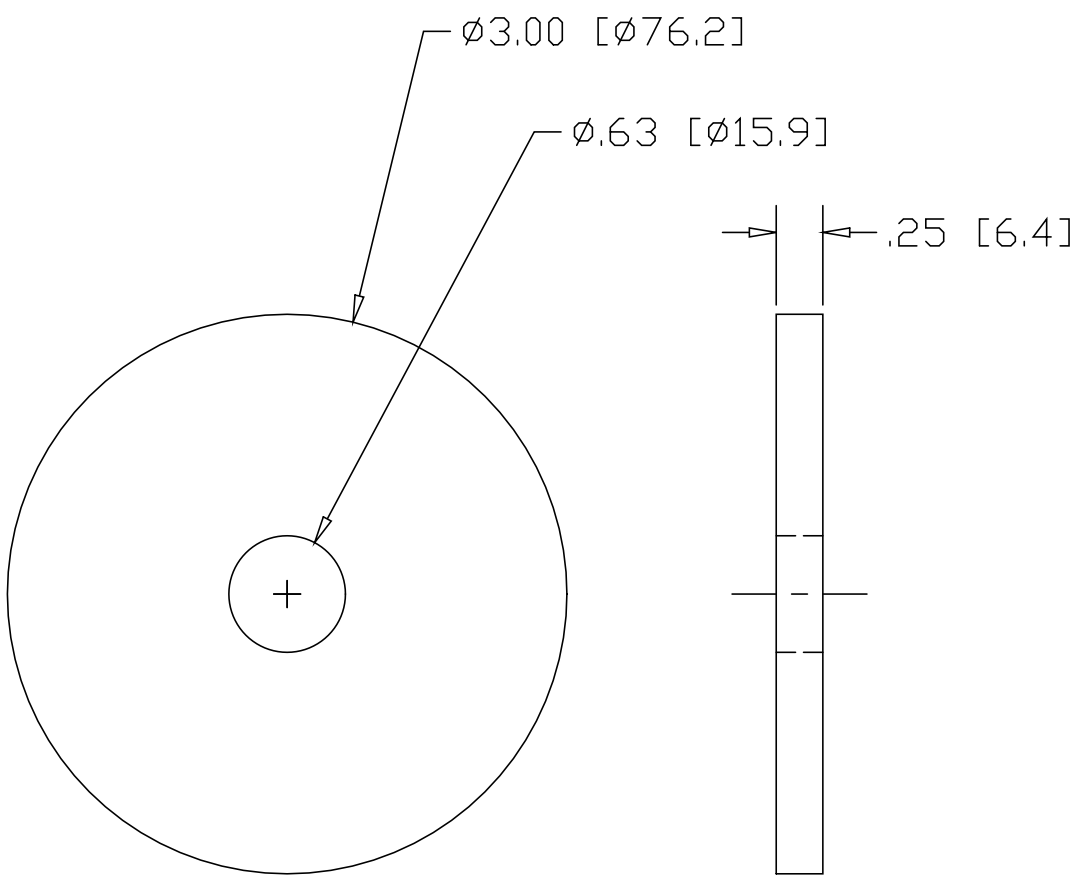



REV
SH
D143C6
DWG NO

REVISIONS			
REV	DESCRIPTION	DATE	APPROVED



INCHES[MILLIMETERS]

ALTERNATE MATERIAL	PART NUMBER
.250 (3003) ALUMINUM ASTM B209	D144C6
.250 (304) STAINLESS STEEL ASTM A240	D145C6
.250 (260) BRASS ASTM B19,B36	D146C6
.250 (280) MUNTZ METAL	D146MC6

PART NAME 3.00" OD BASE DISK WITH .63 DIA CENTER HOLE			
MATERIAL .250 HRP&D STEEL ASTM A569			
DATE 11/20/98		THE WAGNER COMPANIES R & B WAGNER, INC. AND J. G. BRAUN CO.	
DRAWN BY RJF			
FINISH MILL			
SIZE A	WEIGHT .5 LBS	PART NUMBER D143C6	REV