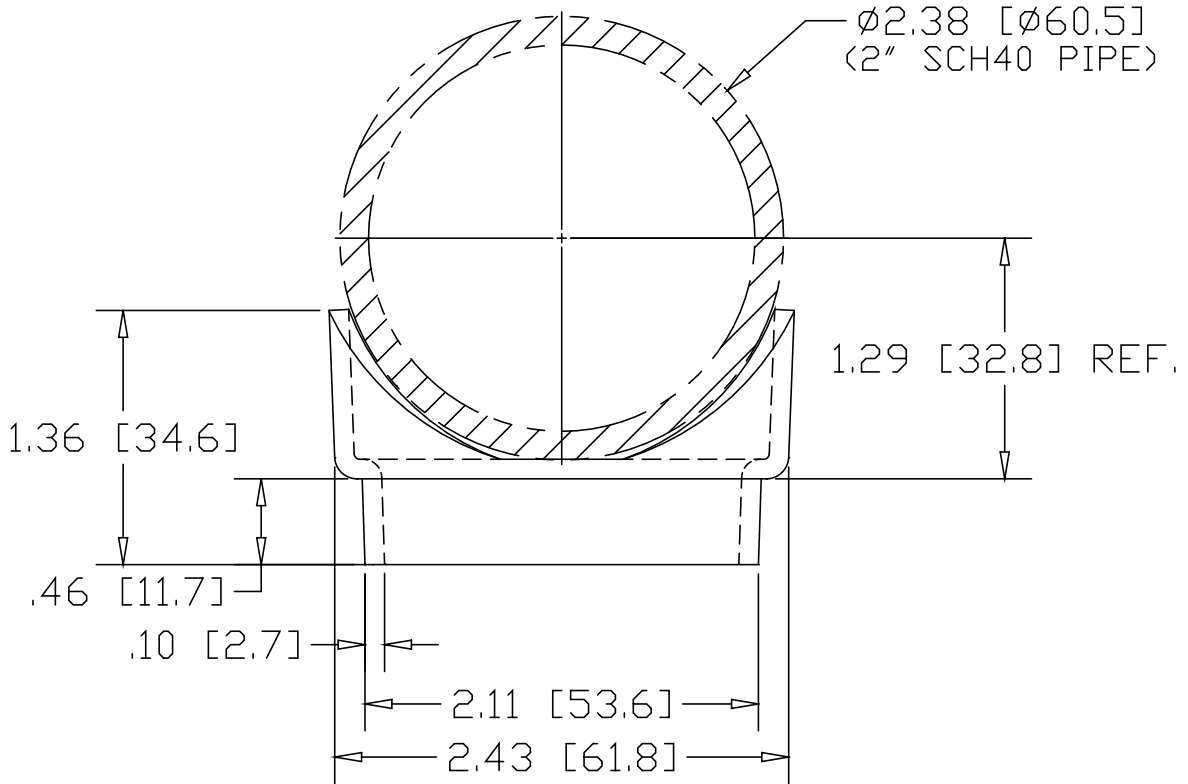
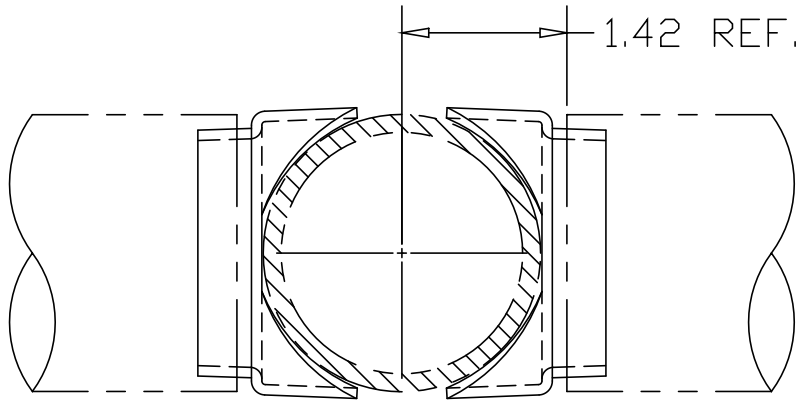
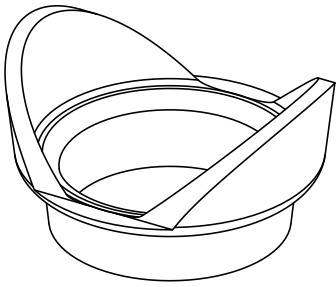



REV
SH
1896
DWG NO

REVISIONS			
REV	DESCRIPTION	DATE	APPROVED



ALTERNATE MATERIAL	PART NUMBER
.09 (3003) ALUMINUM ASTM B209	1906
.09 (304) STAINLESS STEEL ASTM A240	1916

PART NAME 2" SCH40 PIPE TYPE "A" COPED WELDING CONNECTOR			
MATERIAL 12 GA. (.105) HRP&D STEEL ASTM A569			
DATE 5/21/01	 THE WAGNER COMPANIES R & B WAGNER, INC. AND J. G. BRAUN CO.		
DRAWN BY RJF			
FINISH MILL		SIZE A	WEIGHT .17 LBS
			REV