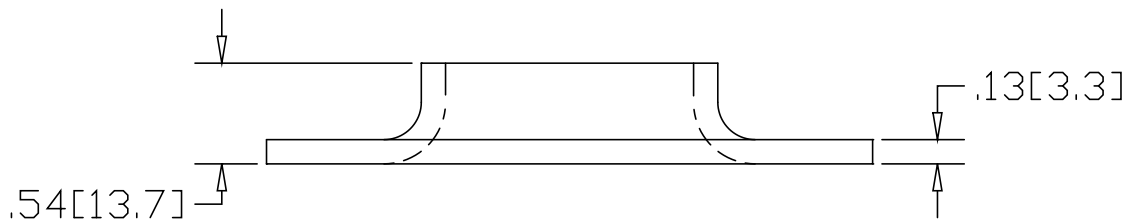
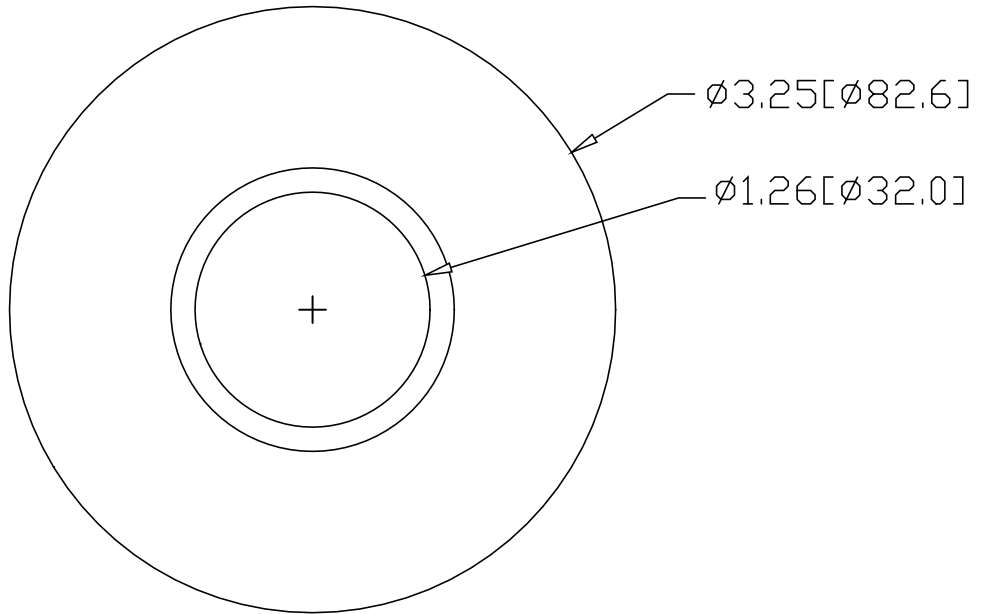



REV
SH
626T
DWG NO

REVISIONS			
REV	DESCRIPTION	DATE	APPROVED



INCHES [MILLIMETERS]

ALTERNATE MATERIAL	PART NUMBER
.125 (3003) ALUMINUM ASTM B209	666T
10 GA. (304) STAINLESS STEEL ASTM A240	706T

PART NAME 1-1/4" O.D. TUBE FLAT BASE FLANGE			
MATERIAL 10 GA. HRP&□ STEEL ASTM A-569			
DATE 1/11/99		R & B WAGNER, INC.	
DRAWN BY RJF			
FINISH MILL	SIZE A	WEIGHT .3 LBS	PART NUMBER 626T
			REV