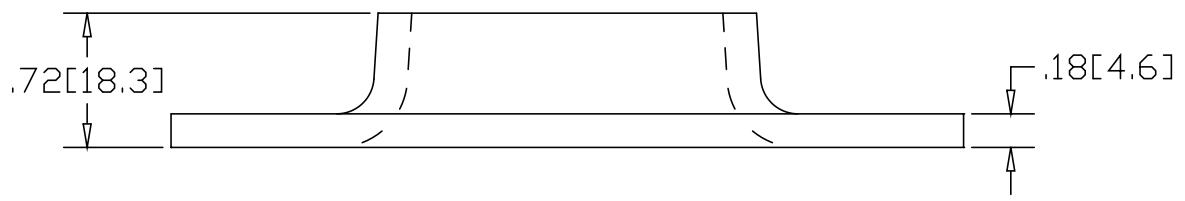
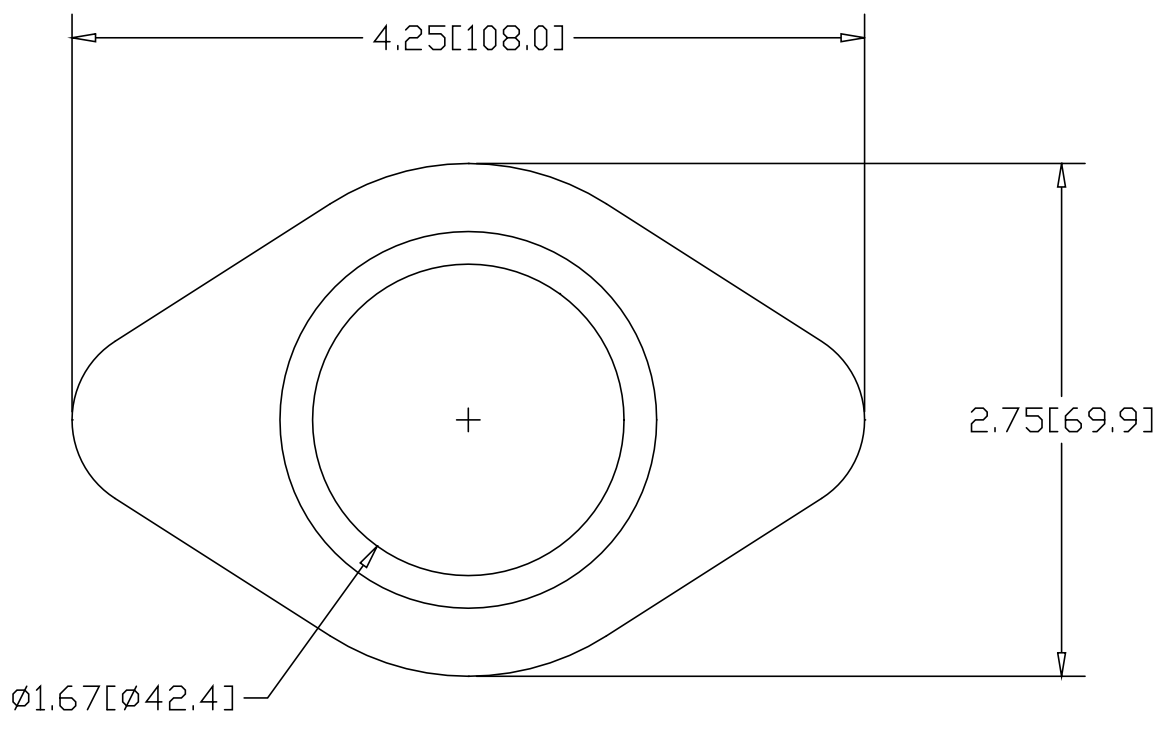



REV  
SH  
4810  
DWG NO

REVISIONS			
REV	DESCRIPTION	DATE	APPROVED



INCHES [MILLIMETERS]

ALTERNATE MATERIAL	PART NUMBER
.190 (3003) ALUMINUM ASTM B-209	4840
7 GA. (304) STAINLESS STEEL ASTM A-240	4870

PART NAME 1-1/4" PIPE SIZE TAPERED FLAT BASE FLANGE			
MATERIAL 7 GA. HRP&D STEEL ASTM A-569			
DATE 3/21/95	 <b>R &amp; B WAGNER, INC.</b>		
DRAWN BY RJF			
FINISH MILL	SIZE A	WEIGHT .36 LBS	PART NUMBER 4810
			REV