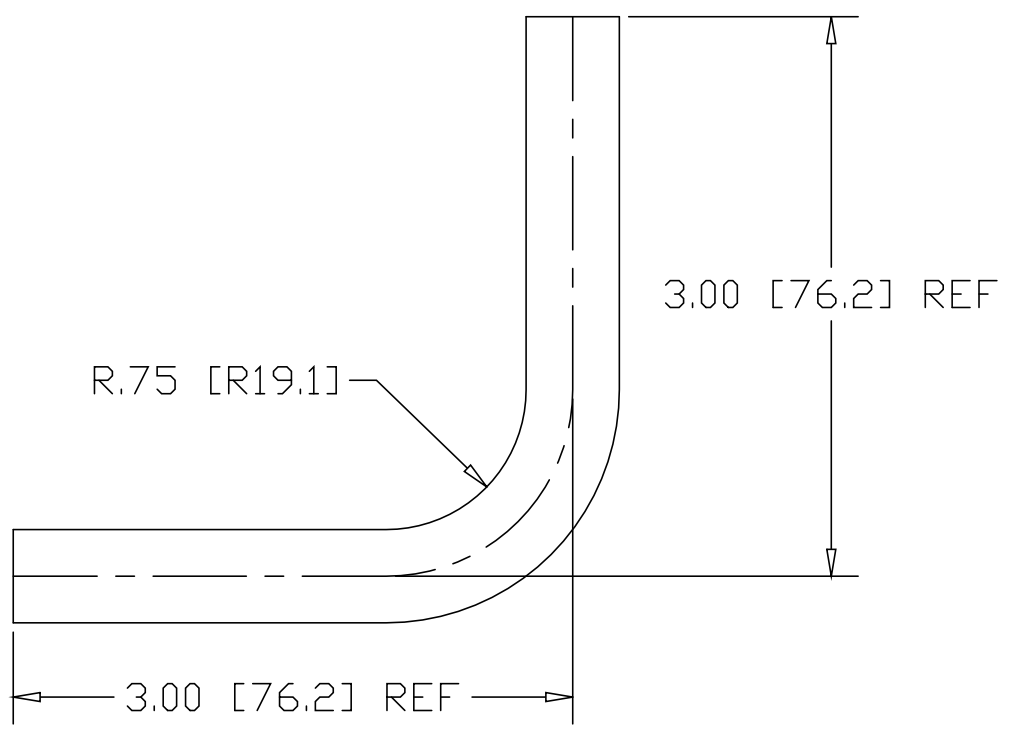
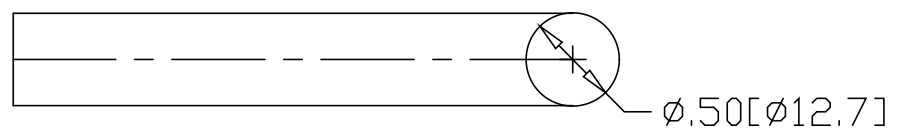


REV  
SH  
R110  
DWG NO


| REVISIONS |             |      |          |
|-----------|-------------|------|----------|
| REV       | DESCRIPTION | DATE | APPROVED |



NOTE: ENDS UNTRIMMED

INCHES[MILLIMETERS]

| ALTERNATE MATERIAL                  | PART NUMBER |
|-------------------------------------|-------------|
| 1/2" $\phi$ 304 STAINLESS STEEL BAR | R120        |
| 1/2" $\phi$ 6063 ALUMINUM BAR       | R240        |
| 1/2" $\phi$ 360 BRASS BAR           | R130        |
| 1/2" $\phi$ 385 ARCH BRONZE BAR     | R210        |

|             |          |   |         |
|-------------|----------|---|---------|
| PART NAME   |          | 1/2" $\phi$ BAR BEND  |         |
| MATERIAL    |          | 1/2" $\phi$ COLD ROLLED STEEL BAR   |         |
| DATE        | 11/20/98 |  <b>THE WAGNER COMPANIES</b><br>R & B WAGNER, INC. AND J. G. BRAUN CO. |         |
| DRAWN BY    | RJF      |   |         |
| FINISH      | MILL     |   |         |
| SIZE        | A        | WEIGHT  | .31 LBS |
| PART NUMBER |          | R110  |         |
| REV         |          |   |         |