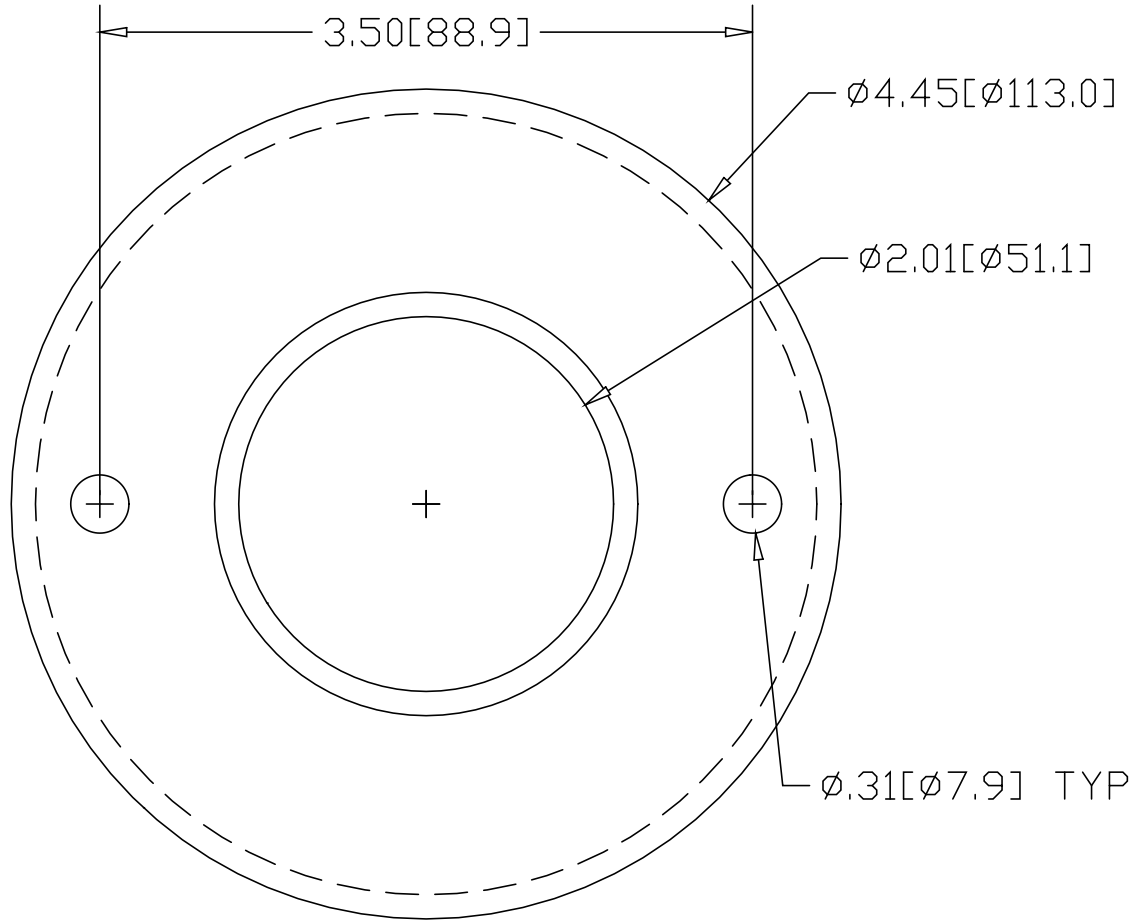


REV  
SH  
1443T  
DWG NO

REVISIONS			
REV	DESCRIPTION	DATE	APPROVED




.43[10.9]

.96[24.4]

INCHES [MILLIMETERS]

\*USE WITH ANCHOR PLATE  
#B1440 IN STEEL  
#PLB1440 ZINC PLATED STEEL  
#B1540 IN STAINLESS

ALTERNATE MATERIAL	PART NUMBER
.125 (3003) ALUMINUM ASTM B209	1483T
10 GA. (304) STAINLESS STEEL ASTM A240	1543T

PART NAME 2.00" OD TUBE HEAVY BASE FLANGE W/(2) HOLES			
MATERIAL 10 GA. HRP&D STEEL ASTM A569			
DATE 9/13/94	 <b>R &amp; B WAGNER, INC.</b>		
DRAWN BY RJF			
FINISH MILL	SIZE A	WEIGHT .64 LBS	PART NUMBER 1443T
			REV