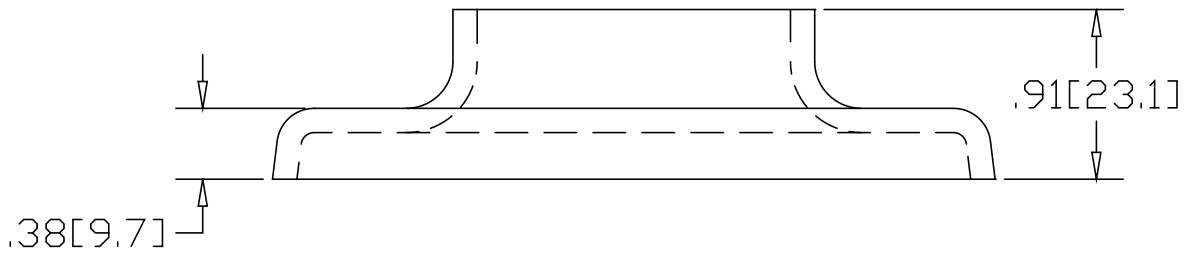
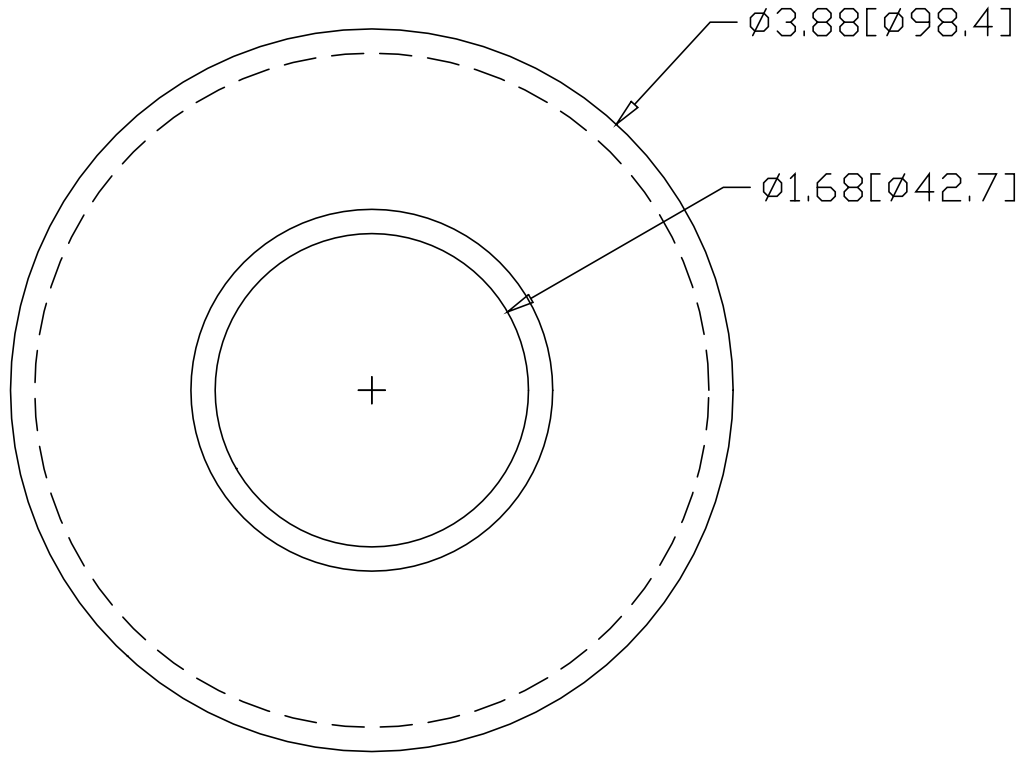



REV
SH
1426
DWG NO

REVISIONS			
REV	DESCRIPTION	DATE	APPROVED



INCHES [MILLIMETERS]

ALTERNATE MATERIAL	PART NUMBER
.125 (3003) ALUMINUM ASTM B209	1466
10 GA. (304) STAINLESS STEEL ASTM A240	1526
.125 (280) MUNTZ METAL	BZ1426

PART NAME		1-1/4" PIPE HEAVY BASE FLANGE					
MATERIAL		10 GA. HRP&D STEEL ASTM A569					
DATE	9/13/94	 R & B WAGNER, INC.					
DRAWN BY	RJF						
FINISH	MILL						
SIZE	A	WEIGHT	.50 LBS	PART NUMBER	1426	REV	