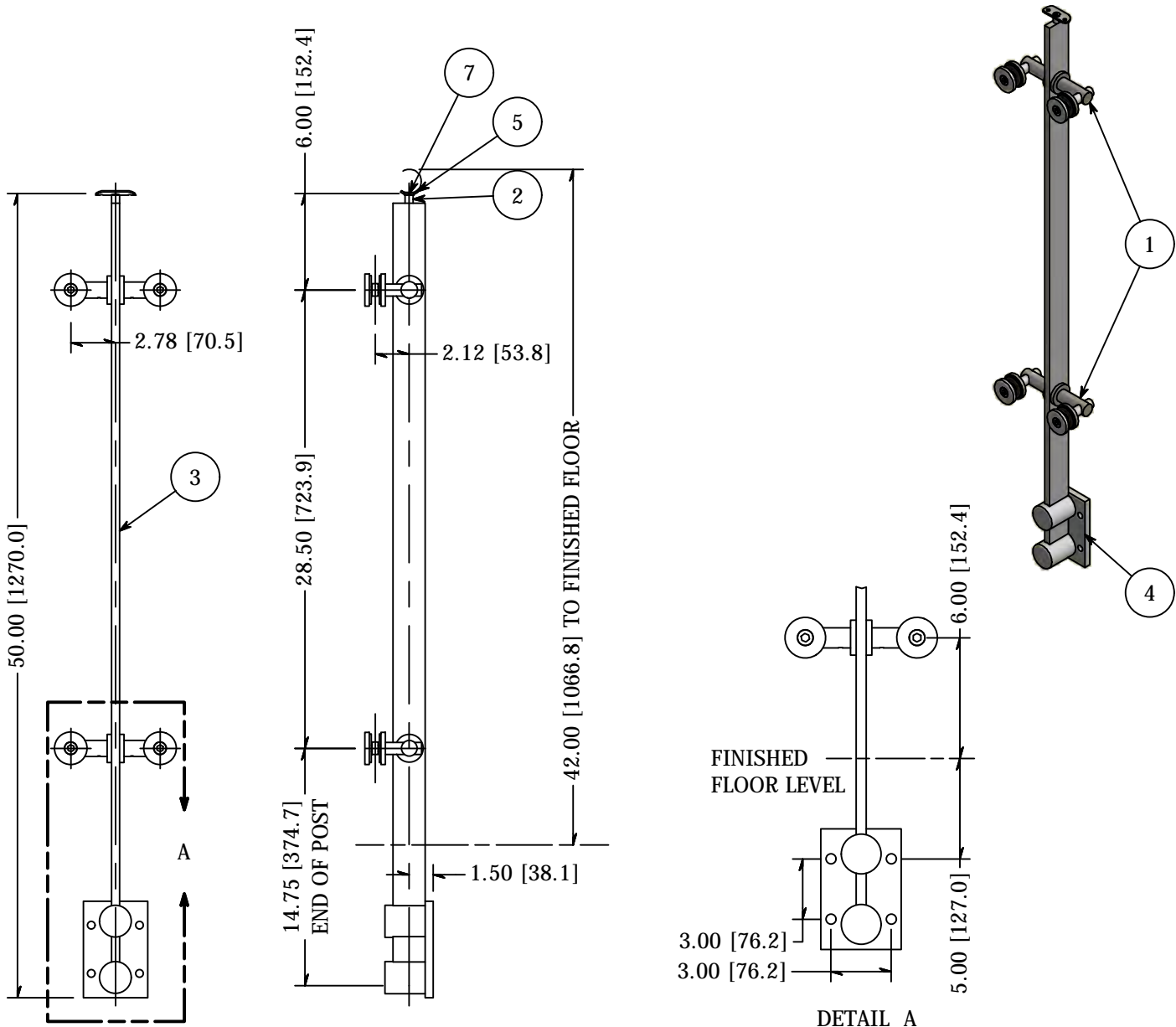


PARTS LIST

ITEM	QTY	PART NUMBER	DESCRIPTION
1	4	LXTB51-1	Point Fitting, Stainless Steel, 51 mm Head, 1 Point, Tubular Body, Brushed Satin Finish, Grade 316, 0.50 Inch Glass
2	1	LG3SSP	Saddle Post stub, Stainless Steel, 1.5 x 0.5 O.D. x 0.12 Wall
3	1	LG35242MFMA	Intermediate Post, Stainless Steel, 2.00 Inch x 0.50 Inch, 42 High, Brushed Satin Finish, Grade 316, Fascia Mount, Post Blank
4	1	LG325FM	Flange, Stainless Steel, Facia Mount 2" x.5" Blade Post, Satin Brushed Finish
5	1	GB4382B.316	Bracket Saddle, SS, W/Countersunk Center Hole #4 Finish, TYPE 316
6	2	FTS3NM08C-0075	Stud, Stainless Steel, M8-1.25 x 75mm, Fully threaded Stud, A4-70
7	1	FAH3N2520-0100	SCREW ST 1/4-20 X 1.00, FLAT ALLEN HEAD, STAINLESS STEEL

B

B



A

A

<p><b>TOLERANCE</b></p> <p>UNLESS OTHERWISE NOTED, TOLERANCES TO CONFORM TO ES.03.011</p>	<p>CUT LENGTH:</p>	<p>FINISH:</p> <p>Satin brushed</p>	<p>DESCRIPTION: Intermediate Post, Stainless Steel, 2.00 Inch x 0.50 Inch, 42 High, Brushed Satin Finish, Grade 316, Fascia Mount, 2-Point Ftg</p>	
	<p>DEVELOPED LENGTH:</p>	<p>WEIGHT:</p> <p>N/A</p>	<p>MATERIAL:</p>	<p>MATERIAL DESC:</p>
	<p>TOOL NUMBER:</p>		<p>DATE:</p> <p>9/20/2019</p>	<p>REV:</p> <p>-</p>
	<p>UNLESS OTHERWISE NOTED, TOLERANCES TO CONFORM TO ES.03.011</p>		<p>DRAWN BY:</p> <p>A. Seeboth</p>	<p>10600 W Brown Deer Rd Milwaukee, WI 53224 COLLABORATIVE METALWORKS <a href="http://www.wagnercompanies.com/">http://www.wagnercompanies.com/</a></p>
		<p>PART NUMBER:</p> <p><b>LG35242CMFM.4</b></p>		<p>WAGNER</p>