

REV

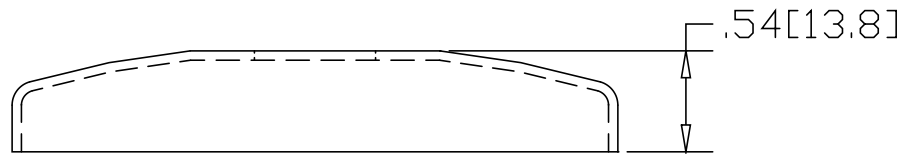
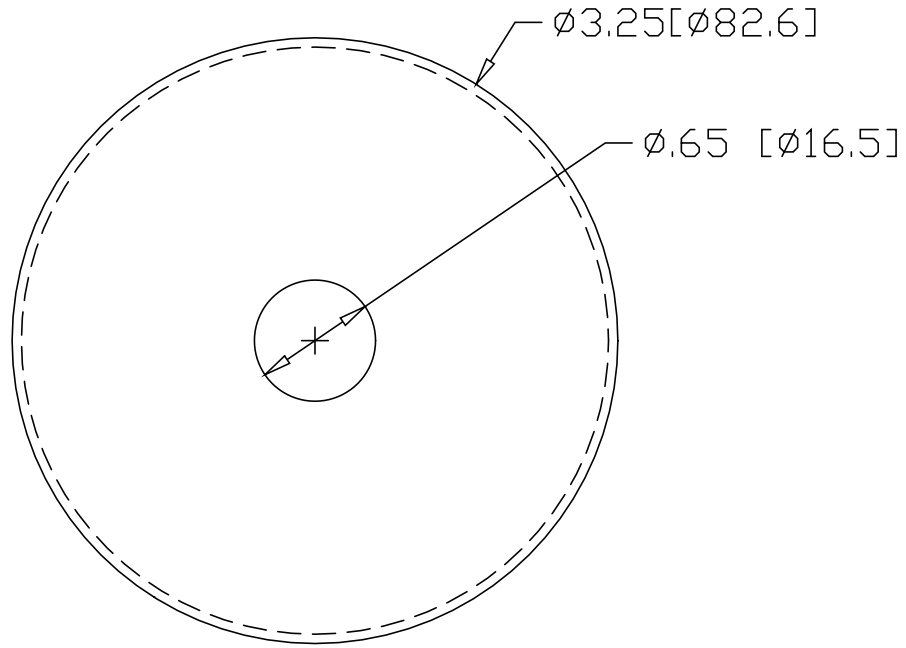
SH

2031

DWG NO

REVISIONS


REV	DESCRIPTION	DATE	APPROVED
-----	-------------	------	----------



\* USE WITH BASE  
 #2031B IN STEEL  
 #2032B IN ALUMINUM  
 #2033B IN STAINLESS  
 #2034B IN BRASS

INCHES [MILLIMETERS]

ALTERNATE MATERIAL	PART NUMBER
.063 (3003) ALUMINUM ASTM B209	2032
18 GA. (304) STAINLESS STEEL A240	2033
.050 (260) BRASS B19,B36	2034

PART NAME		.63" OD TUBE SNAP COVER	
MATERIAL		18 GA. CR STEEL ASTM A366	
DATE	01/07/03	 <b>R &amp; B WAGNER, INC.</b>	
DRAWN BY	RJF		
FINISH	MILL	SIZE	A
		WEIGHT	.13 LBS
		PART NUMBER	2031
			REV