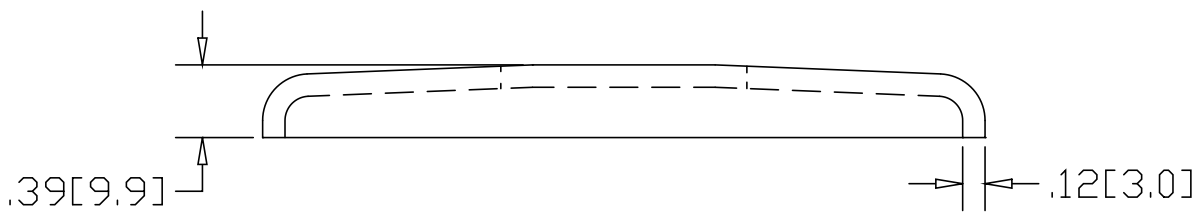
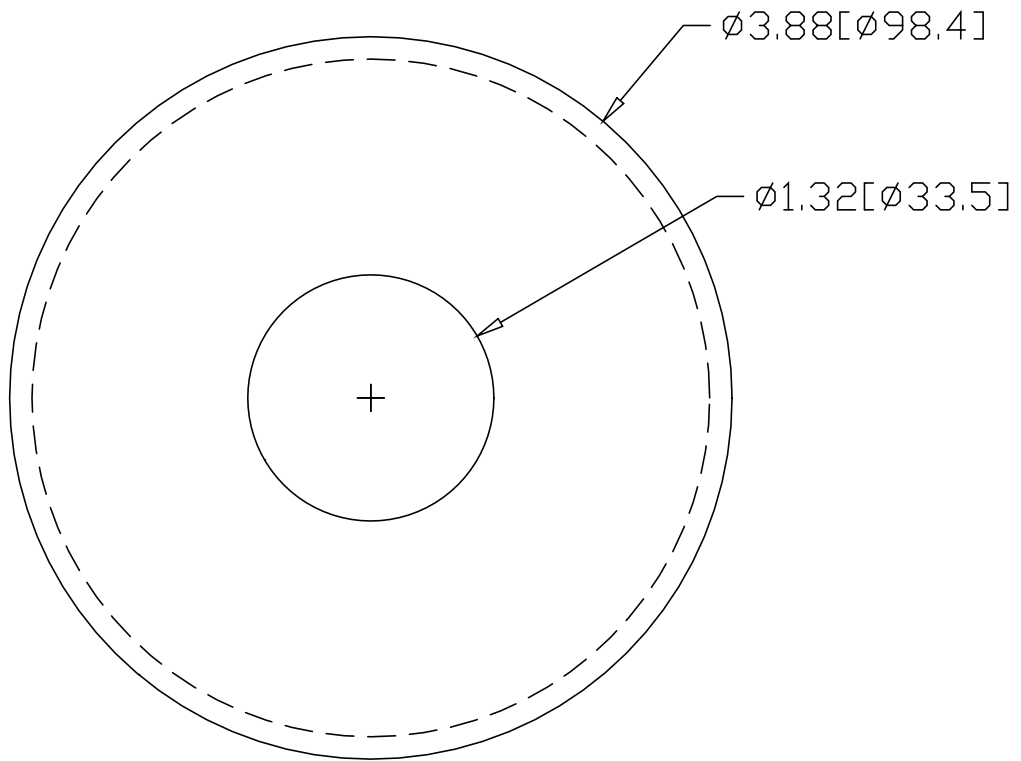



REV
SH
2518
DWG NO

REVISIONS			
REV	DESCRIPTION	DATE	APPROVED



INCHES [MILLIMETERS]

ALTERNATE MATERIAL	PART NUMBER
.125 (3003) ALUMINUM ASTM B209	2558
10 GA. (304) STAINLESS STEEL ASTM A240	2598
.125 (280) MUNTZ METAL	BZ2518

PART NAME		1" PIPE HEAVY FLUSH BASE FLANGE		
MATERIAL		10 GA. HRP&D STEEL ASTM A569		
DATE	3/31/99	 R & B WAGNER, INC.		
DRAWN BY	RJF			
FINISH	MILL	SIZE	WEIGHT	PART NUMBER
		A	.5 LBS	2518
				REV