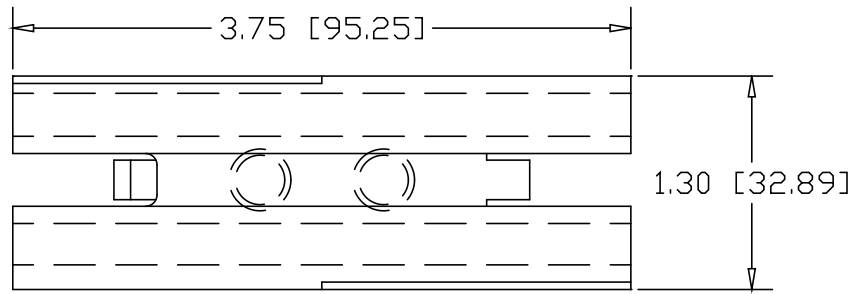
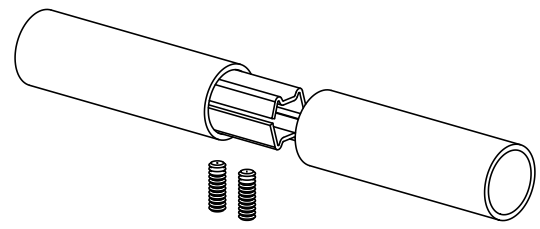
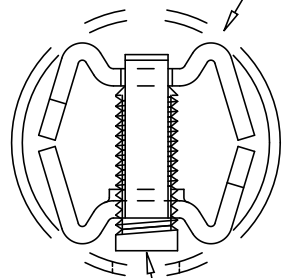


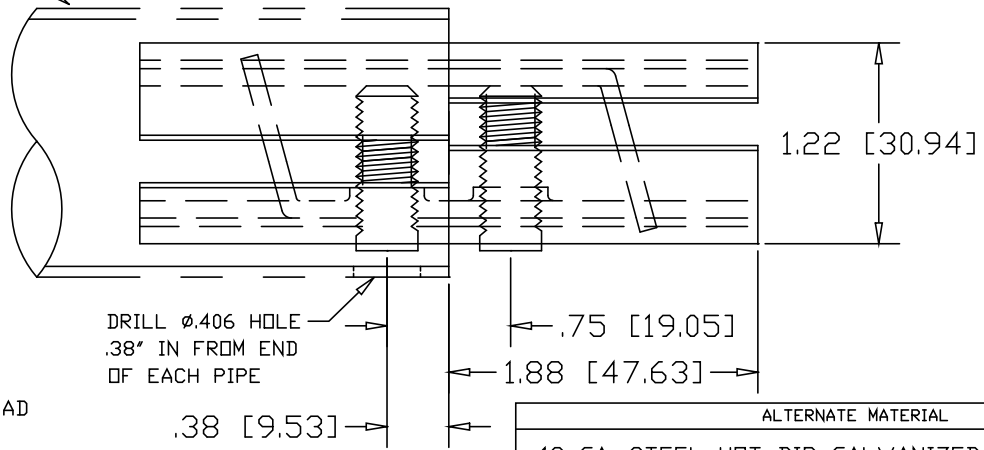
REVISIONS			
REV	DESCRIPTION	DATE	APPROVED



1.63" OD X .065W OR .120W TUBE




3/8-16 SOCKET HEAD SET-SCREW (2) PLACES



DRILL Ø.406 HOLE .38" IN FROM END OF EACH PIPE

ALTERNATE MATERIAL	PART NO.
12 GA. STEEL HOT DIP GALVANIZED	G3366-5
12 GA. STEEL ZINC PLATED	PL3366-5
.090 (3003) ALUMINUM ASTM B209	3367-5
.090 (304) STAINLESS STEEL ASTM A240	3369-5

PART NAME 1.63" OD X .065W OR .120W TUBE DOUBLE-LOCK SPLICE-LOCK			
MATERIAL 12 GA. HRP&D STEEL ASTM A569			
DATE 9/24/01		R & B WAGNER, INC.	
DRAWN BY JAH		SIZE A	WEIGHT .45 LBS
FINISH MILL		PART NUMBER 3366-5	REV