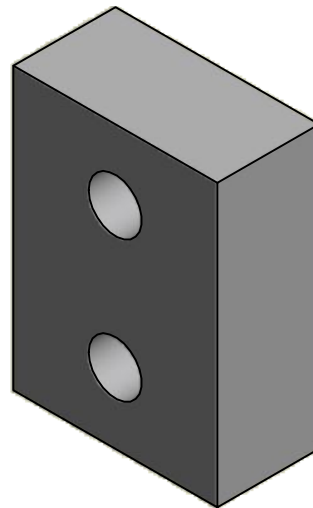


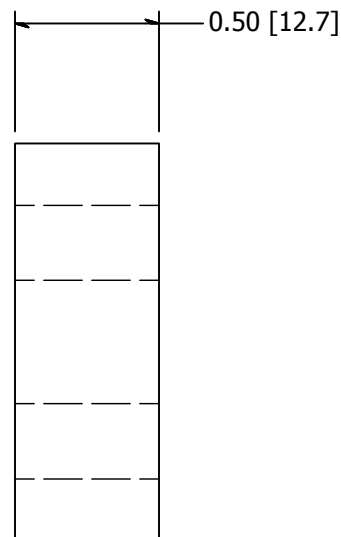
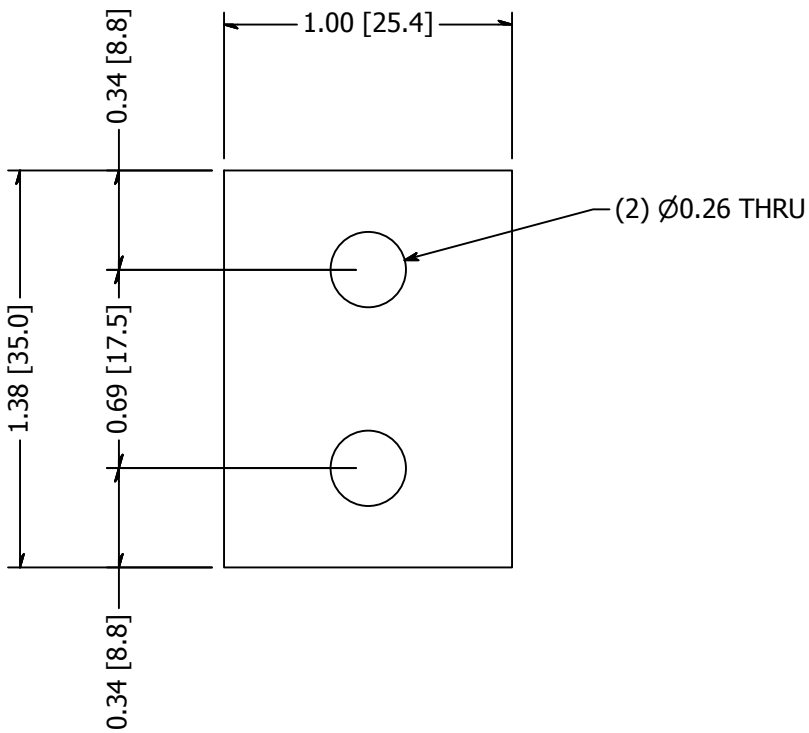
2

1



B

B



A

A

REVISION HISTORY

REV	DESCRIPTION	DATE
1	Revised Material From B31025 To B30510	6/21/2018

<b>TOLERANCE</b> UNLESS OTHERWISE NOTED, TOLERANCES TO CONFORM TO ES.03.011	CUT LENGTH:	FINISH: Mill	DESCRIPTION: Point Fitting, Stainless Steel, Flat Adapter, Brushed Satin Finish, Grade 316	
	DEVELOPED LENGTH:	WEIGHT: 0.19 lbmass	MATERIAL: B30510	MATERIAL DESC: 1/2 x 1 In. 316 SS 12 Ft.
	TOOL NUMBER:		DATE: 6/21/2018	REV: 1
			DRAWN BY: T. Kolbach	10600 W Brown Deer Rd Milwaukee, WI 53224 COLLABORATIVE METALWORKS <a href="http://www.wagnercompanies.com/">http://www.wagnercompanies.com/</a>
			PART NUMBER: <b>LXFP30-FLAT</b>	

2

1

