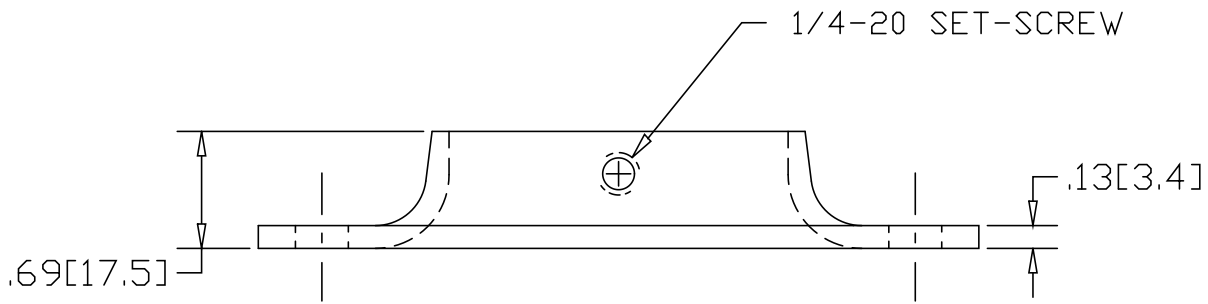
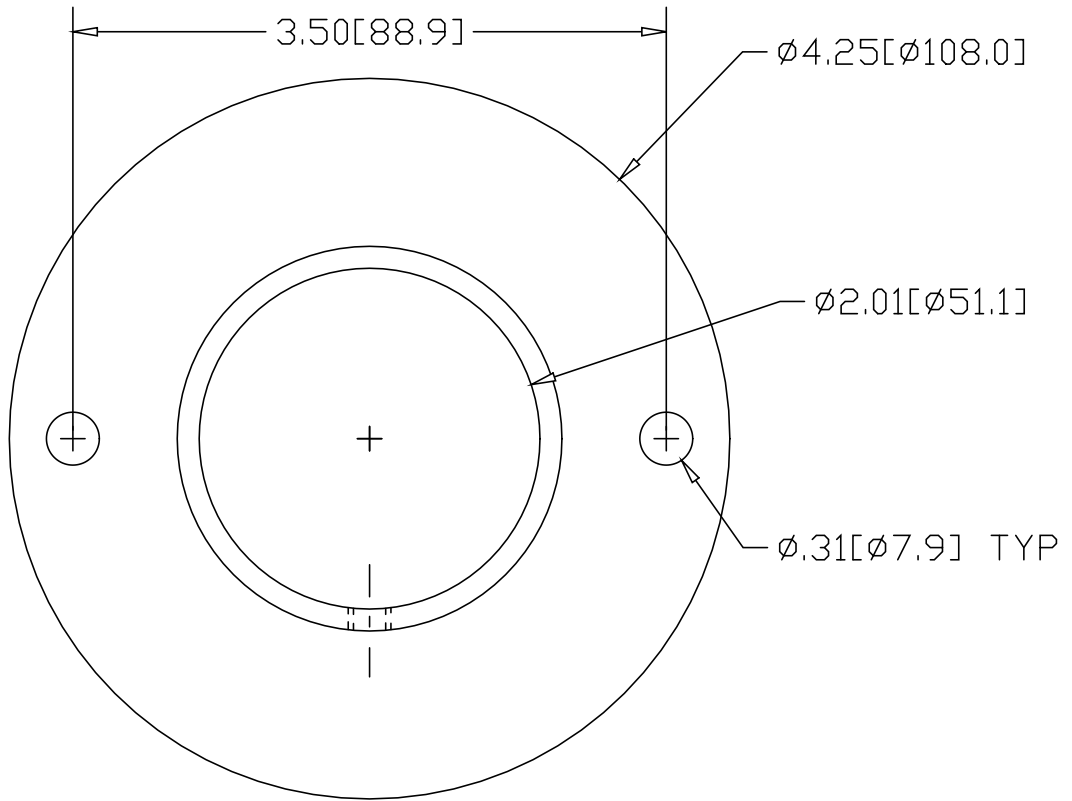



REV  
SH  
646T  
DWG NO

REVISIONS			
REV	DESCRIPTION	DATE	APPROVED



INCHES [MILLIMETERS]

ALTERNATE MATERIAL	PART NUMBER
.125 (3003) ALUMINUM ASTM B209	686T
10 GA. (304) STAINLESS STEEL ASTM A240	723T

PART NAME 2" O.D. TUBE FLAT BASE FLANGE W/(2) HOLES AND SET-SCREW				
MATERIAL 10 GA. HRP&D STEEL ASTM A-569				
DATE 10/26/93	 <b>R &amp; B WAGNER, INC.</b>			
DRAWN BY RJF				
FINISH MILL	SIZE A	WEIGHT .54 lbs	PART NUMBER 646T	REV