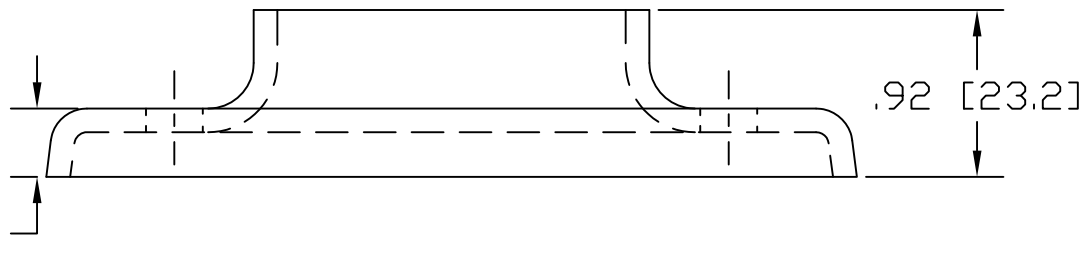
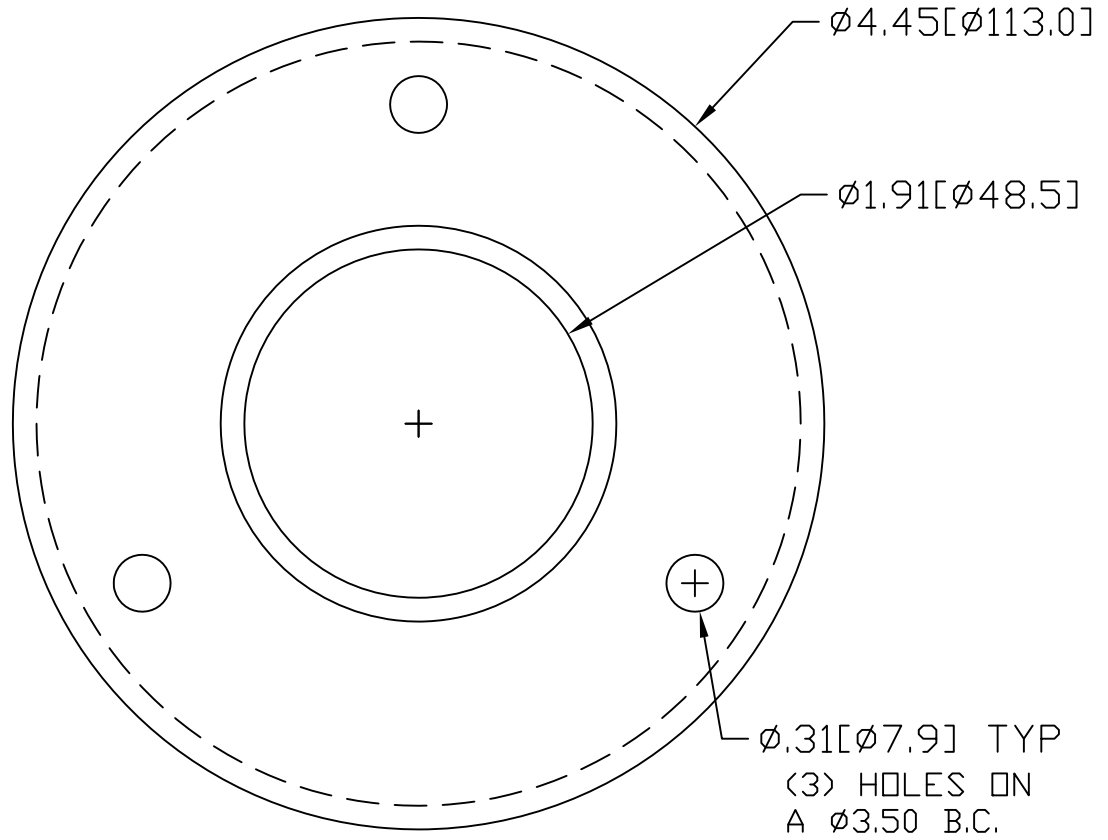



REVISIONS			
REV	DESCRIPTION	DATE	APPROVED
A	.92 WAS .96, .375 WAS .43	04/07/14	RJF



INCHES [MILLIMETERS]

*USE WITH ANCHOR PLATE
#B1440 IN STEEL
#PLB1440 ZINC PLATED STEEL
#B1540 IN STAINLESS STEEL

		ALTERNATE MATERIAL		PART NUMBER	
.125 (3003) ALUMINUM ASTM B209				1475A	
10 GA. (304) STAINLESS STEEL ASTM A240				1535A	
PART NAME 1-1/2" PIPE HEAVY BASE FLANGE W/(3) HOLES					
MATERIAL 10 GA. HRP&D STEEL ASTM A569					
DATE 9/13/94		 R & B WAGNER, INC.			
DRAWN BY RJF					
FINISH		SIZE		PART NUMBER	
MILL		A		1435A	
		WEIGHT		REV	
		.64 LBS		A	