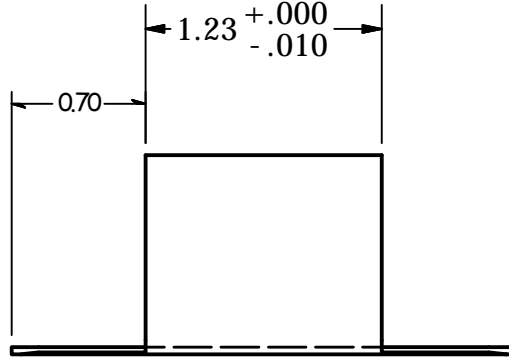
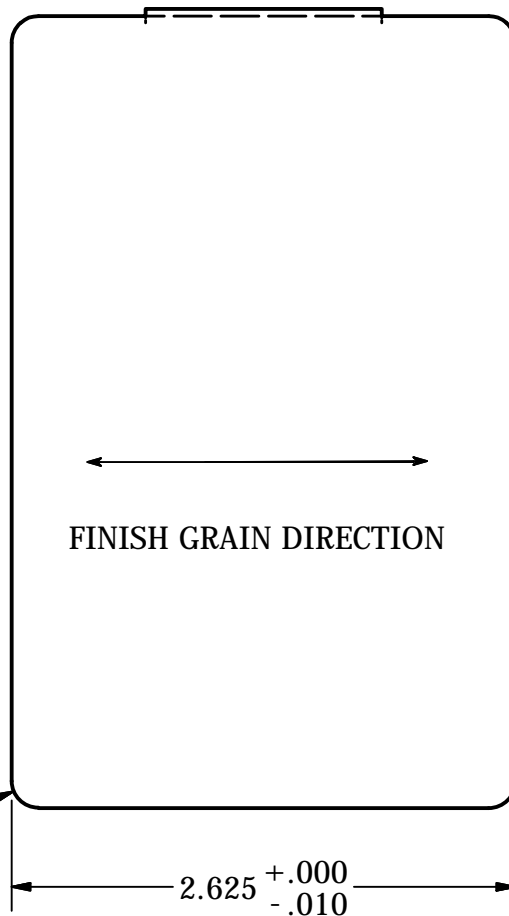
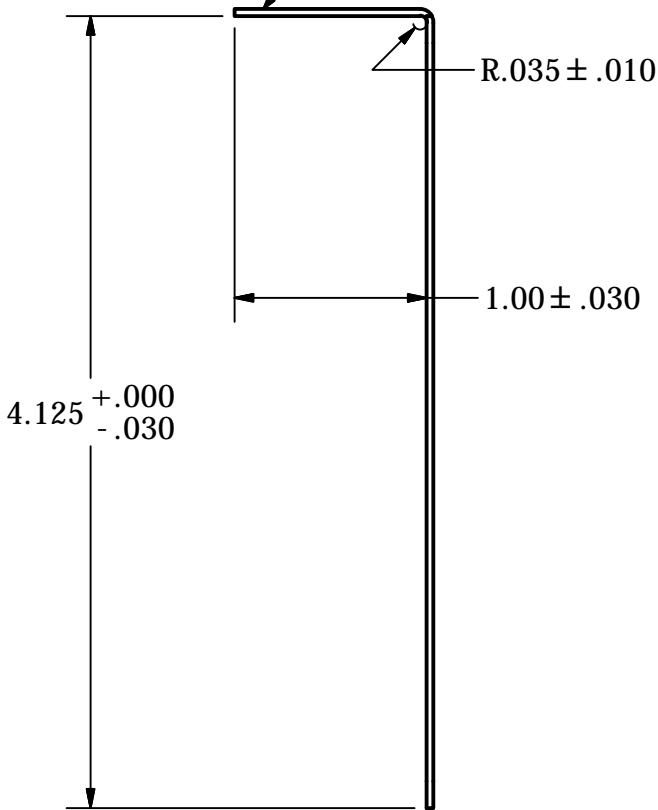


2

1



#4 ON OUTSIDE



B

B

A

A

REVISION HISTORY

REV	DESCRIPTION	DATE
1	Revised Height From 4.00 to 4.125	06/15/16

TOLERANCE UNLESS OTHERWISE NOTED, TOLERANCES TO CONFORM TO ES.03.011	CUT LENGTH:	FINISH:	DESCRIPTION: END CAP, CLADDING, GLASS RAIL SHOE MOLDING, 2.625		
		#4 Satin	MATERIAL:	MATERIAL DESC:	
	DEVELOPED LENGTH:	WEIGHT:	S619	20GA. Sheet 304 SS 48 X 120 X .0350	
		0.13 lbmass	DATE:	REV:	
TOOL NUMBER:		DRAWN BY:	1		
		K. Turdo	WAGNER 10600 W Brown Deer Rd Milwaukee, WI 53224		
		PART NUMBER:	COLLABORATIVE METALWORKS http://www.wagnercompanies.com/		
		GR3852EC.4			

2

1

