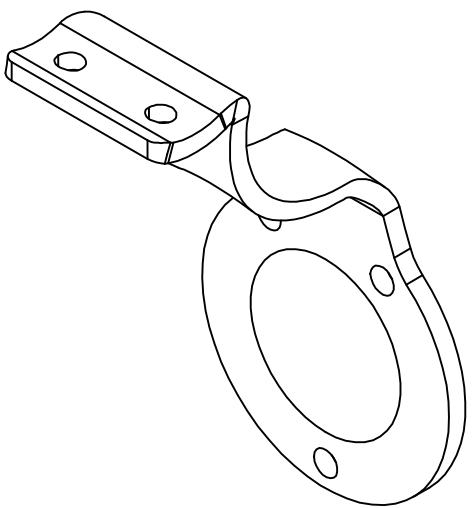


- NOTES:
1. DIMENSIONS SHOWN AS INCHES [MILLIMETERS].
 2. DIMENSIONS WITH (XXX) DENOTE AS REFERENCE.
 3. ENCIRCLED DIMENSIONS DENOTE AS CRITICAL DIMENSIONS.
 4. BURRS 0.015 MAX. [0.381]

TOLERANCE	CUT LENGTH:	FINISH:	DESCRIPTION:	
		#4 Satin	BRACKET SS STYLE B 2.50 1.50 DROP 3-HOLE	
	UNLESS OTHERWISE NOTED, TOLERANCES TO CONFORM TO ES.03.011	DEVELOPED LENGTH:	MATERIAL:	Sheet, Stainless Steel, 7 Gauge, (.1743-.1843) #4 Satin Finish, 2 sides,
		WEIGHT:	S761	Material Desc: Type 304, ASTM A240, 48 X 120, Paper Interleave Only
	TOOL NUMBER:	0.58 lbmass	DATE:	10/14/2022
	TL8905, TL8237		DRAWN BY:	W. Purgill
			PART NUMBER:	3460




WAGNER
 COLLABORATIVE METALWORKS <http://www.wagnercompanies.com/>
 10600 W Brown Deer Rd
 Milwaukee, WI 53224