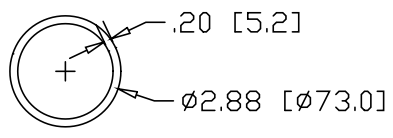
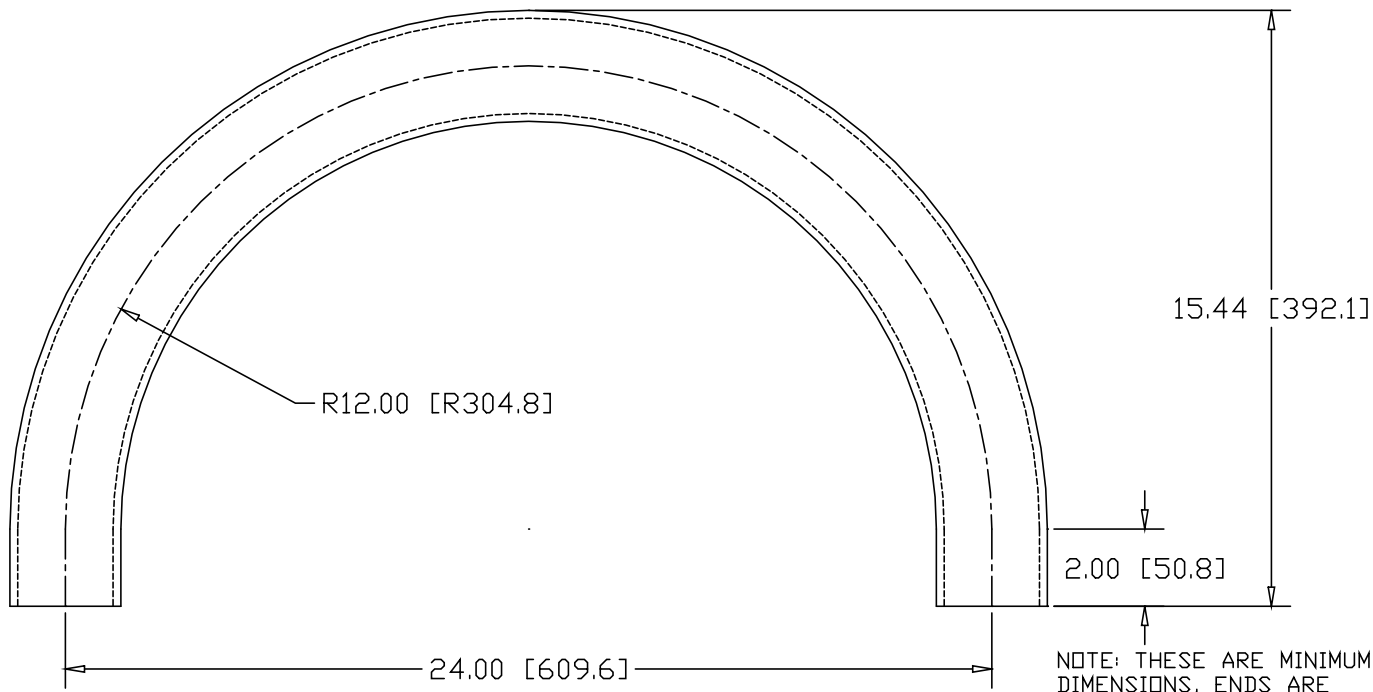


REV
SH
9463B
DWG NO

| REVISIONS | | | |
|-----------|-------------|------|----------|
| REV | DESCRIPTION | DATE | APPROVED |



INCHES [MILLIMETERS]

| ALTERNATE MATERIAL | PART NUMBER |
|--|-------------|
| 2-1/2" SCH 40 (6063) ALUMINUM PIPE | 9477B |
| 2-1/2" SCH 40 (304) STAINLESS STEEL PIPE | 9491B |

| | | | |
|--|------------------|--------------------|-----|
| PART NAME 2-1/2" PIPE SIZE 180° ELL X 10.56" I.R. W/ (2) 2" TANGENTS | | | |
| MATERIAL 2-1/2" SCH 40 A53 STEEL PIPE | | | |
| DATE 8/21/01 | WAGNER | R & B WAGNER, INC. | |
| DRAWN BY JAH | | | |
| FINISH MILL | | | |
| SIZE A | WEIGHT 19.92 LBS | PART NUMBER 9463B | REV |