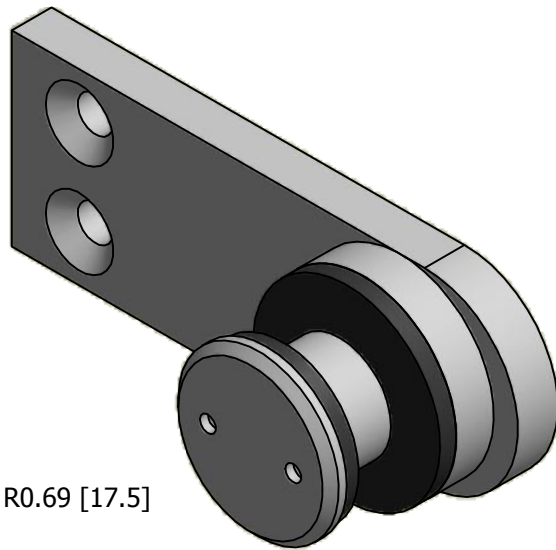
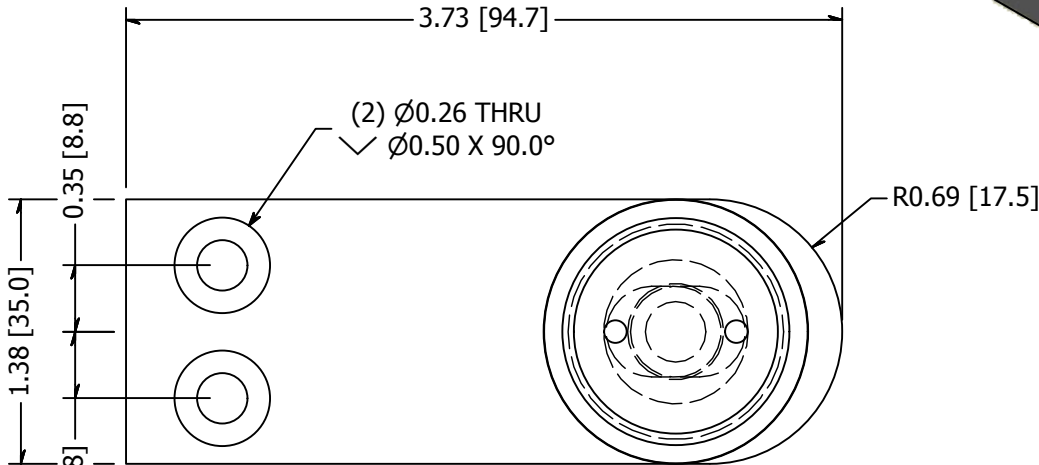


2

1

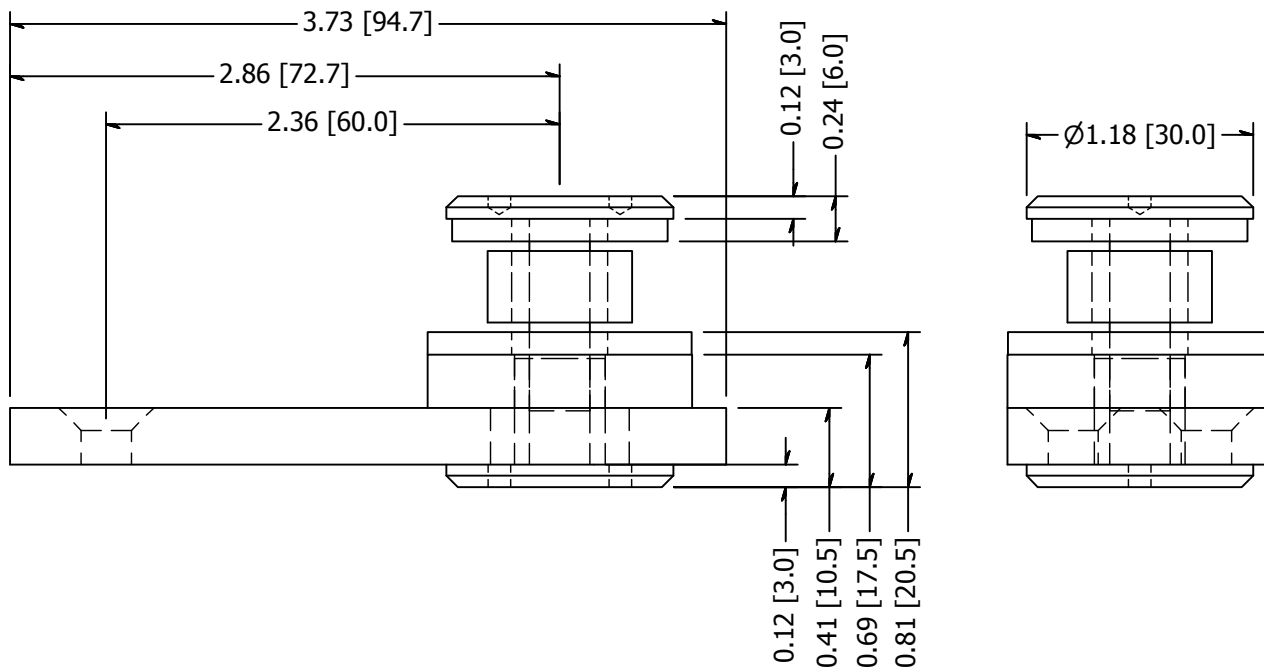
B

B



A

A



A

A

REVISION HISTORY			
REV	DESCRIPTION	DATE	APPROVED
1	Revised Hole To Slot	11/20/2014	TLK
2	Revised To Metric	3/20/2015	TLK

TOLERANCE X.X..... = ± .060 X.XX..... = ± .030 X.XXX..... = ± .010 XX°..... = ± 1° UNLESS OTHERWISE NOTED	MATERIAL: 316 Stainless	DESCRIPTION: Point Fitting, Stainless Steel, 30 mm Head, 1 Point, Flat Plate, Brushed Satin Finish, Grade 316, 0.50 Inch Glass	
	FINISH: Satin Brushed	DATE: 3/30/2015	REV: 2
	WEIGHT: 0.70 lbmass	DRAWN BY: T. Kolbach	
		ITEM NUMBER: LXFP30-1	



2

1

1

2



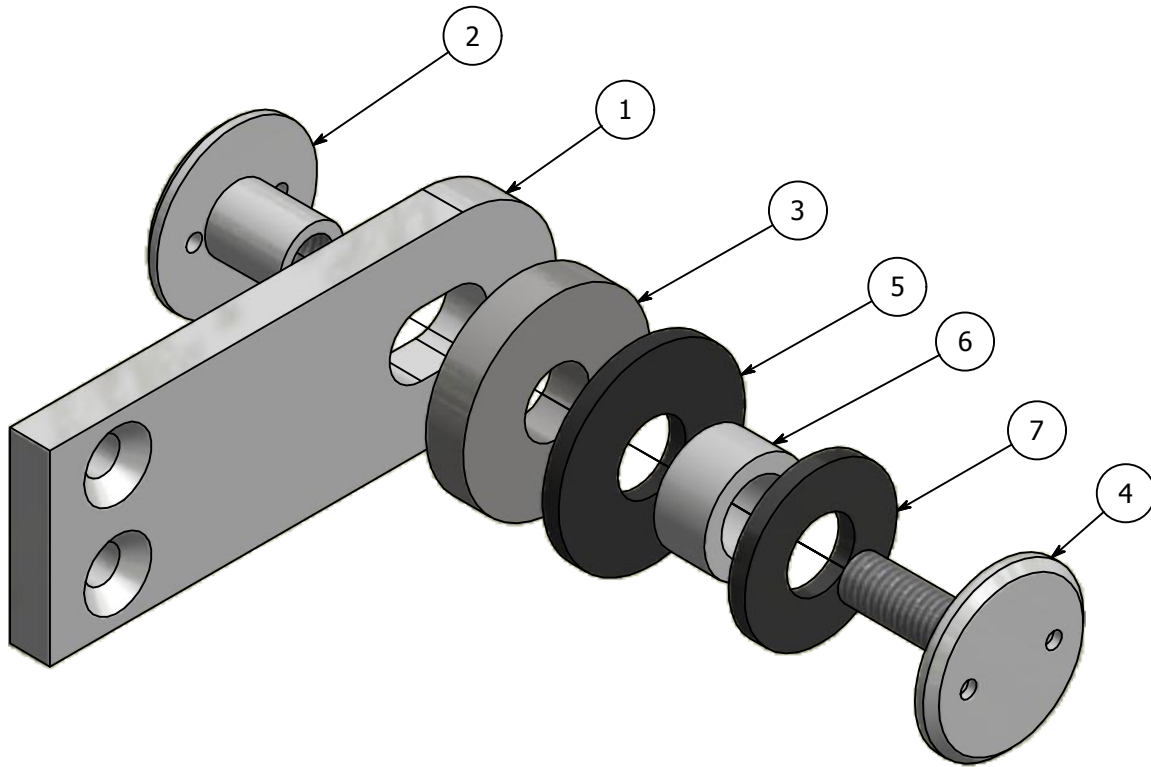
1

PARTS LIST

ITEM	QTY	PART NUMBER	DESCRIPTION
1	1	LXFP30-1A	Point Fitting, Stainless Steel, 1 Point, Flat Plate, Brushed Satin Finish, Grade 316
2	1	LXFP30-1B	Point Fitting, Stainless Steel, Cap Nut, Brushed Satin Finish, Grade 316
3	1	LXFP30-1C	Point Fitting, Stainless Steel, 7mm Washer, Brushed Satin Finish, Grade 316
4	1	LXFP30-1H	Point Fitting, Stainless Steel, Cap Screw, Brushed Satin Finish, Grade 316
5	1		Washer, Rubber, 34.9mm OD x 12.7mm ID x 3mm Thick
6	1		Spacer, Plastic, 19.1mm OD x 12.7mm ID x 9.5mm Long
7	1		Washer, Rubber, 28.5mm OD x 12.7mm ID x 3mm Thick

B

B



A

A

<p>TOLERANCE</p> <p>X.X.....= ± .060</p> <p>X.XX.....= ± .030</p> <p>X.XXX.....= ± .010</p> <p>XX°.....= ± 1°</p> <p>UNLESS OTHERWISE NOTED</p>	MATERIAL:	DESCRIPTION:		
	316 Stainless	Point Fitting, Stainless Steel, 30 mm Head, 1 Point, Flat Plate, Brushed Satin Finish, Grade 316, 0.50 Inch Glass		
	FINISH:	DATE:	REV:	
	Satin Brushed	3/30/2015	2	
WEIGHT:	DRAWN BY:		<p>COLLABORATIVE METAL WORKS</p>	
0.61 lbmass	T. Kolbach		<p>LXFP30-1</p>	
		ITEM NUMBER:		

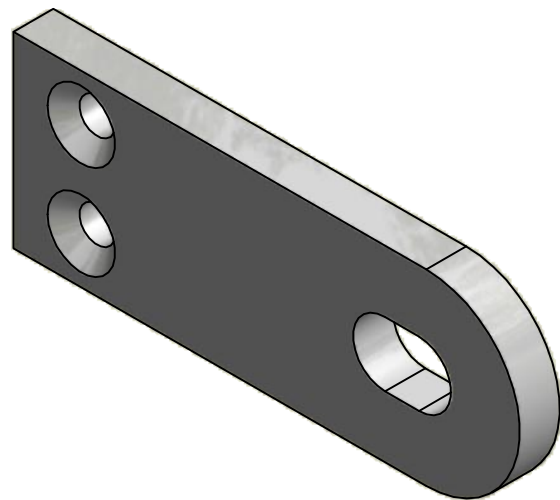
2



1

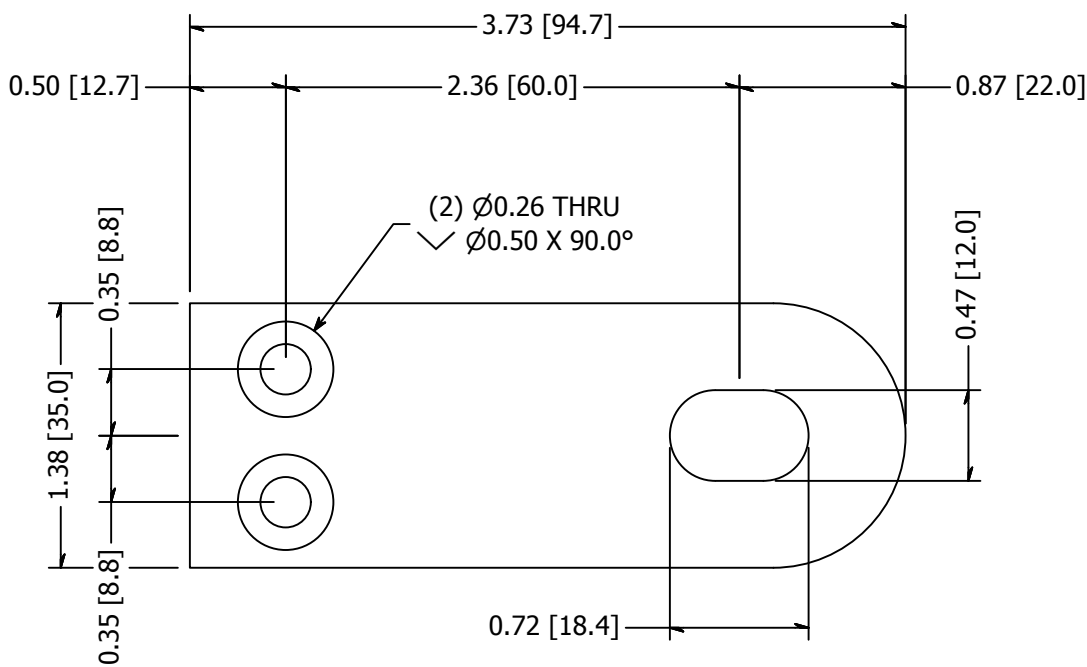
2

1



B

B



A

A

LXFP30-1A

TOLERANCE X.X..... = ± .060 X.XX..... = ± .030 X.XXX..... = ± .010 XX°..... = ± 1° UNLESS OTHERWISE NOTED	MATERIAL:	316 Stainless			DESCRIPTION:	Point Fitting, Stainless Steel, 1 Point, Flat Plate, Brushed Satin Finish, Grade 316	
	FINISH:	Satin Brushed		DATE:	3/30/2015	REV:	2
	WEIGHT:	0.38 lbmass		DRAWN BY:	T. Kolbach		
					ITEM NUMBER:	LXFP30-1	



2

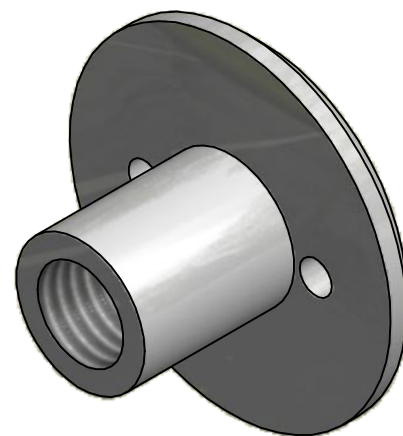
1



2

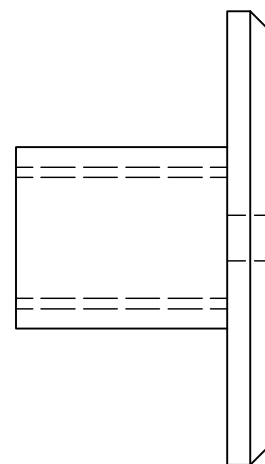
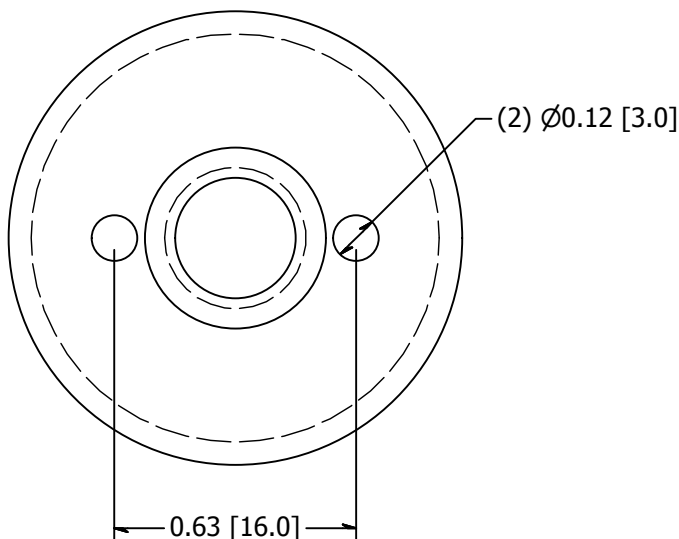
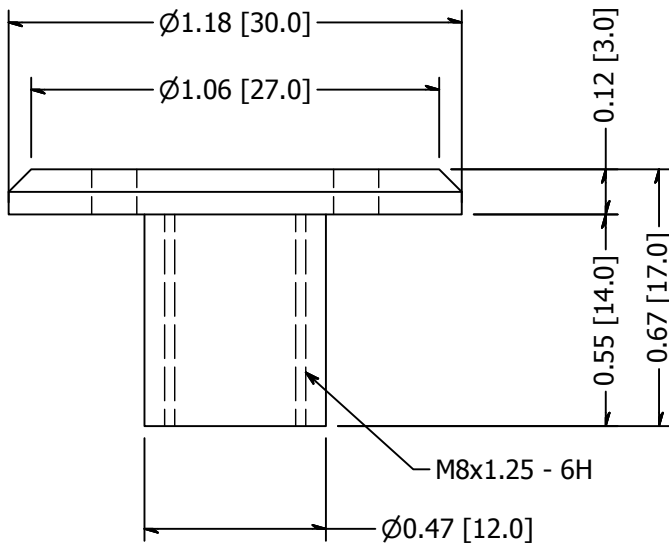


1



B

B



A

A

LXFP30-1B

TOLERANCE X.X..... = ± .060 X.XX..... = ± .030 X.XXX..... = ± .010 XX°..... = ± 1° UNLESS OTHERWISE NOTED	MATERIAL: 316 Stainless	DESCRIPTION: Point Fitting, Stainless Steel, Cap Nut, Brushed Satin Finish, Grade 316	
	FINISH: Satin Brushed	DATE: 3/30/2015	REV: 2
	WEIGHT: 0.05 lbmass	DRAWN BY: T. Kolbach	
		ITEM NUMBER: LXFP30-1	



2



1

2

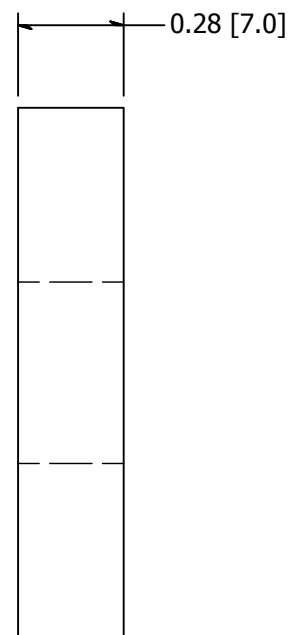
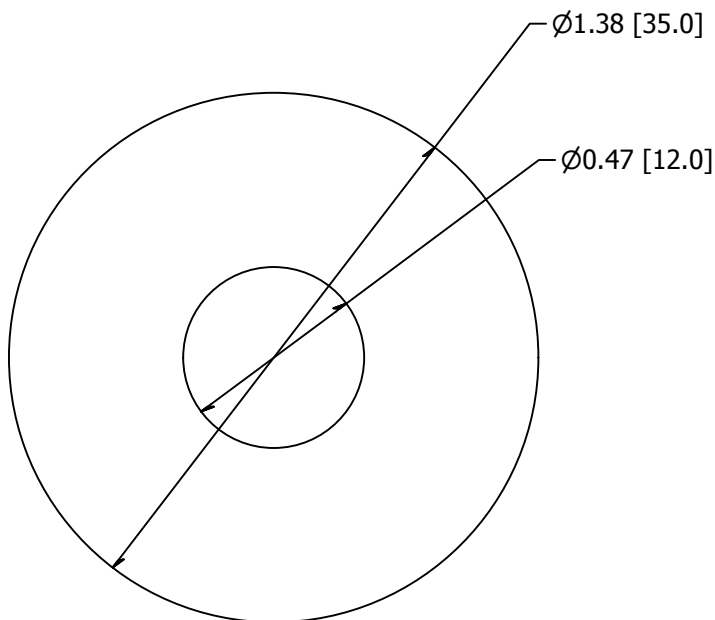


1



B


B



A

A

LXFP30-1C

TOLERANCE X.X..... = ± .060 X.XX..... = ± .030 X.XXX..... = ± .010 XX°..... = ± 1° UNLESS OTHERWISE NOTED	MATERIAL:	DESCRIPTION:		
	316 Stainless	Point Fitting, Stainless Steel, 7mm Washer, Brushed Satin Finish, Grade 316		
	FINISH:	DATE:	REV:	 WAGNER COLLABORATIVE METAL WORKS
	Satin Brushed	3/30/2015	2	
WEIGHT:	DRAWN BY:		ITEM NUMBER:	
0.10 lbmass	T. Kolbach		LXFP30-1	

2

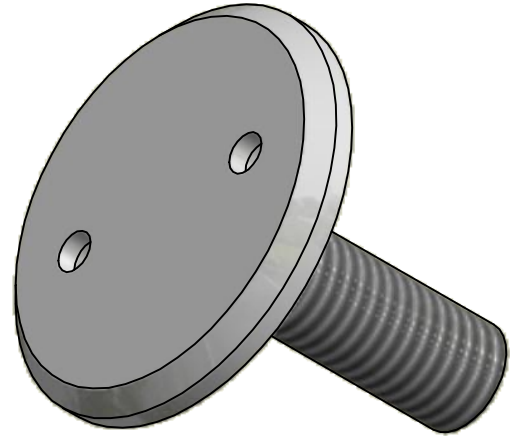


1

2

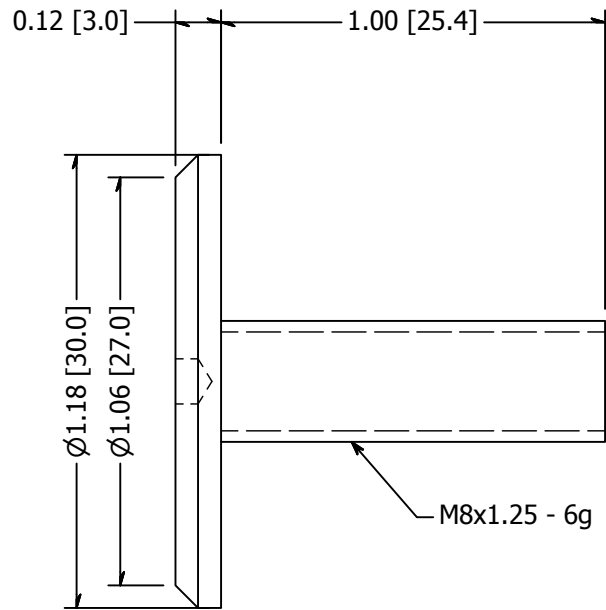
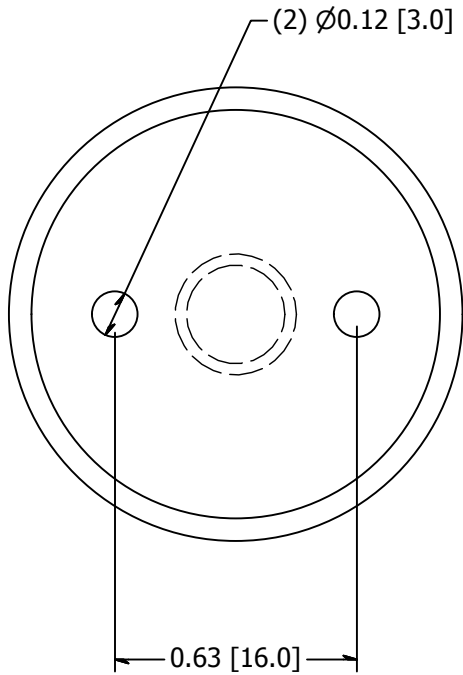


1



B


B



A

A

LXFP30-1H

TOLERANCE X.X..... = $\pm .060$ X.XX..... = $\pm .030$ X.XXX..... = $\pm .010$ XX°..... = $\pm 1^\circ$ UNLESS OTHERWISE NOTED	MATERIAL:	DESCRIPTION:		
	316 Stainless	Point Fitting, Stainless Steel, Cap Screw, Brushed Satin Finish, Grade 316		
	FINISH:	DATE:	REV:	 WAGNER COLLABORATIVE METAL WORKS
	Satin Brushed	3/30/2015	2	
WEIGHT:	DRAWN BY:		ITEM NUMBER:	
0.06 lbmass	T. Kolbach		LXFP30-1	

2



1