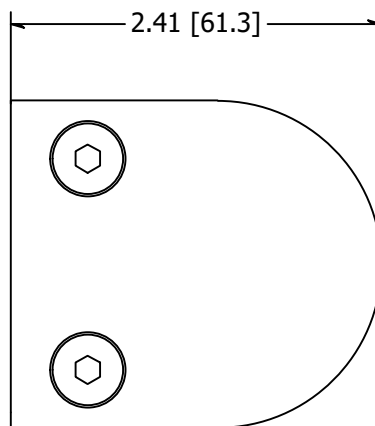
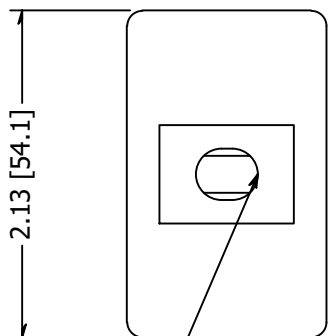
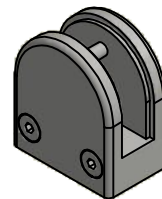


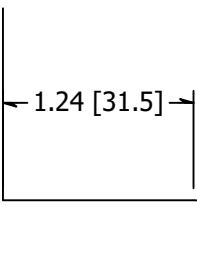
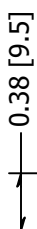
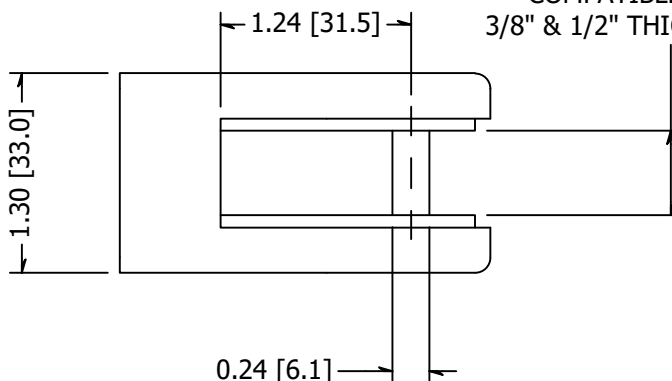
2

1

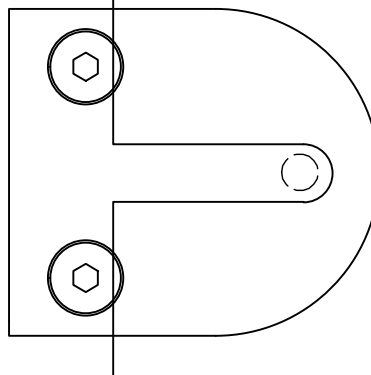


USE M6 SIZE BOLT
TO MOUNT

COMPATIBLE WITH
3/8" & 1/2" THICK PANELS



R0.19 [R4.8]



Notch Reference

REVISION HISTORY

ALTERNATE PARTS	REV	DESCRIPTION	DATE
Part #	1	Initial Drawing	5/31/2022
162813R-F	2	Added Notching Reference	7/24/2023

TOLERANCE UNLESS OTHERWISE NOTED, TOLERANCES TO CONFORM TO ES.03.011	CUT LENGTH:	FINISH:	DESCRIPTION: Clip, Stainless Steel, Panel Mount, Flat Base, For 1/2 Inch Panel, Round Type, Brushed Satin Finish, Type 316	
		#4 Satin	MATERIAL:	MATERIAL DESC:
	DEVELOPED LENGTH:	WEIGHT:	z-Stainless Steel	
	TOOL NUMBER:	N/A	DATE: 7/24/2023	REV: 2
			DRAWN BY: H. Malik	
			PART NUMBER: 152813R-F	
			 10600 W Brown Deer Rd Milwaukee, WI 53224 COLLABORATIVE METALWORKS http://www.wagnercompanies.com/	

2

1