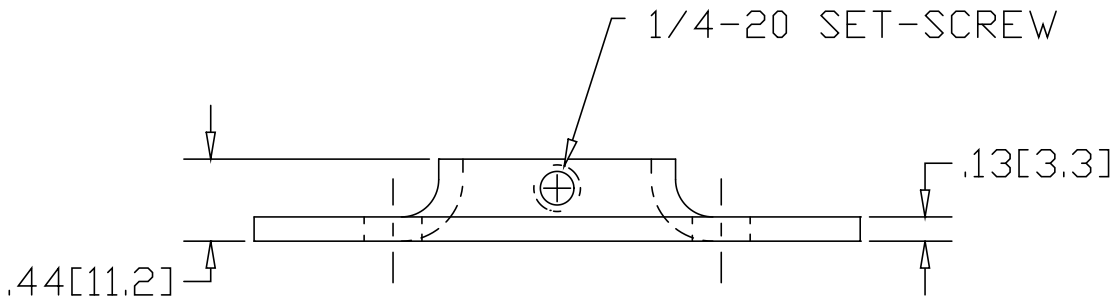
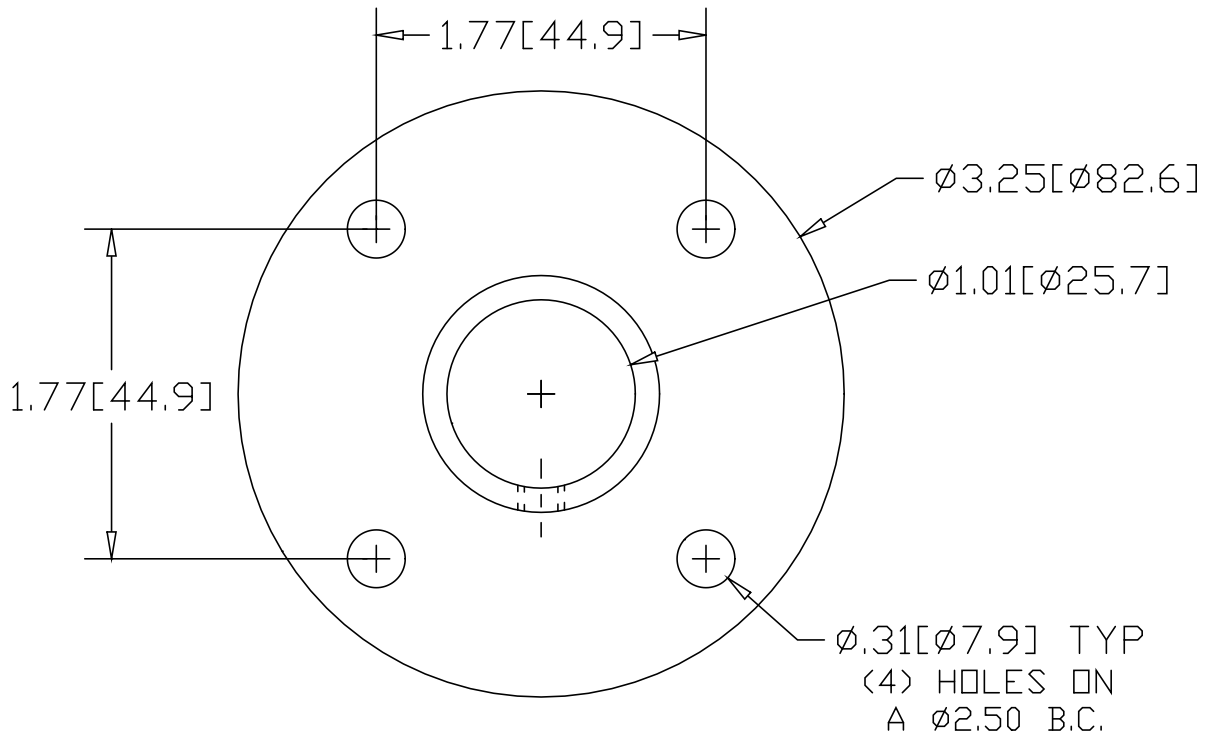


REV
SH
623T
DWG NO

REVISIONS			
REV	DESCRIPTION	DATE	APPROVED



INCHES [MILLIMETERS]

ALTERNATE MATERIAL	PART NUMBER
.125 (3003) ALUMINUM ASTM B209	663T
10 GA. (304) STAINLESS STEEL ASTM A240	703T

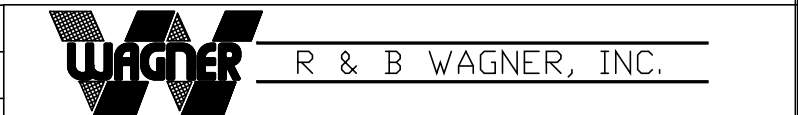
PART NAME 1" O.D. TUBE FLAT BASE FLANGE W/(4) HOLES AND SET-SCREW

MATERIAL 10 GA. HRP&D STEEL ASTM A-569

DATE 1/11/99

DRAWN BY RJF

FINISH



MILL

SIZE A WEIGHT .3 LBS

PART NUMBER 623T REV