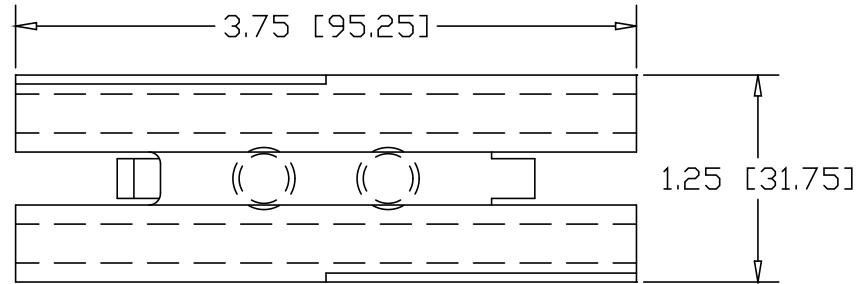
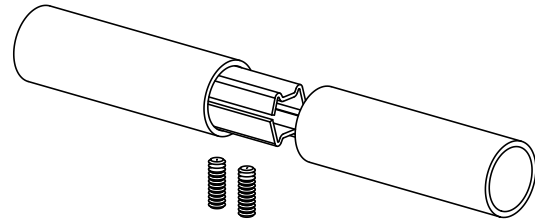
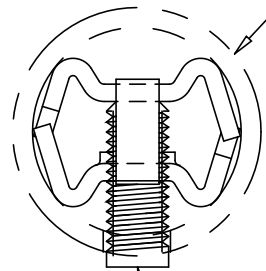


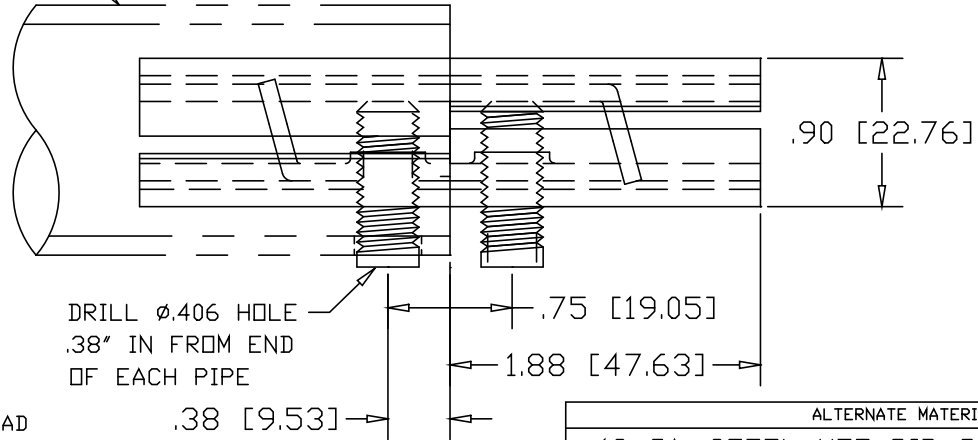
REVISIONS			
REV	DESCRIPTION	DATE	APPROVED



1.50" OD X .125W TUBING




3/8-16 SOCKET HEAD SET-SCREW X 1" (2) PLACES



DRILL ϕ .406 HOLE .38" IN FROM END OF EACH PIPE

ALTERNATE MATERIAL	PART NO.
12 GA. STEEL HOT DIP GALVANIZED	G3366-8
12 GA. STEEL ZINC PLATED	PL3366-8
.090 (3003) ALUMINUM ASTM B209	3367-8
.090 (304) STAINLESS STEEL ASTM A240	3369-8

PART NAME 1.50" O.D. X .125W TUBE DOUBLE-LOCK SPLICE-LOCK							
MATERIAL 12 GA. HRP&D STEEL ASTM A569							
DATE	9/20/01	 R & B WAGNER, INC.					
DRAWN BY	JAH						
FINISH	MILL						
SIZE	A	WEIGHT	.38 LBS	PART NUMBER	3366-8	REV	