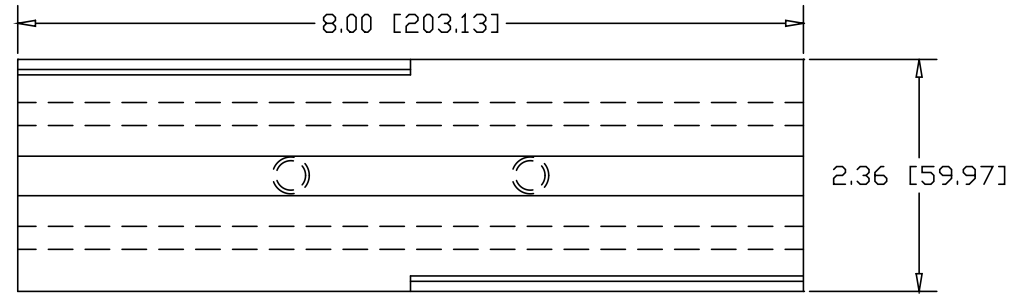
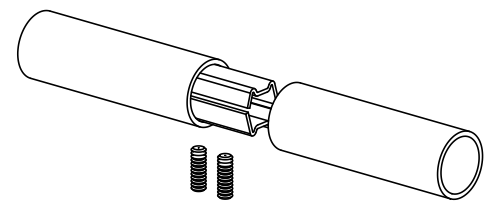
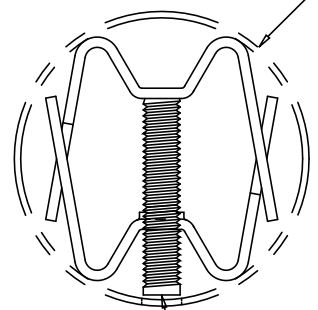


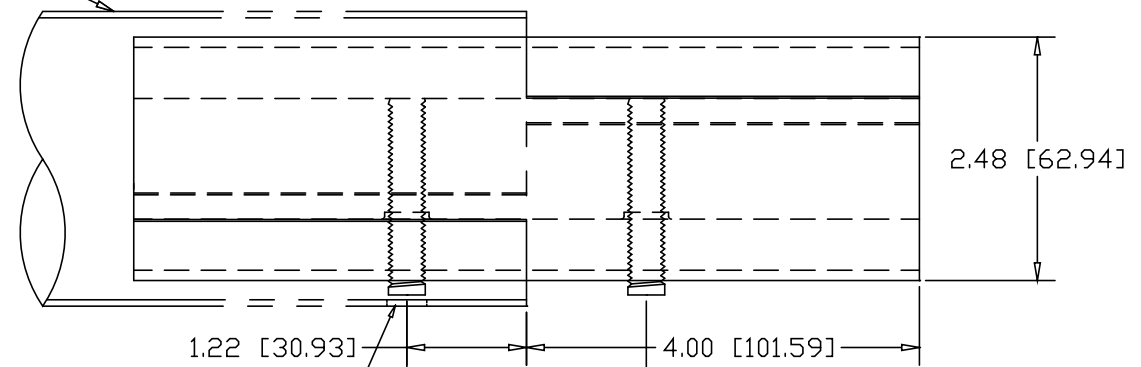
REVISIONS			
REV	DESCRIPTION	DATE	APPROVED



3.00" OD X .065W TUBE




3/8-16
SOCKET HEAD
SET-SCREW
(2) PLACES



DRILL ϕ .406 HOLE
1.22" IN FROM END
OF EACH PIPE

INCHES [MILLIMETERS]

ALTERNATE MATERIAL	PART NO.
12 GA. STEEL HOT DIP GALVANIZED	G3397-8
12 GA. STEEL ZINC PLATED	PL3397-8
.090 (3003) ALUMINUM ASTM B209	3398-8
.090 (304) STAINLESS STEEL ASTM A240	3399-8

PART NAME		3.00" OD X .065W TUBE DOUBLE-LOCK SPLICE-LOCK 8" LONG					
MATERIAL		12 GA. HRP&D STEEL ASTM A569					
DATE	9/24/01	 R & B WAGNER, INC.					
DRAWN BY	JAH						
FINISH	MILL						
SIZE	A	WEIGHT	2.35 LBS	PART NUMBER	3397-8	REV	