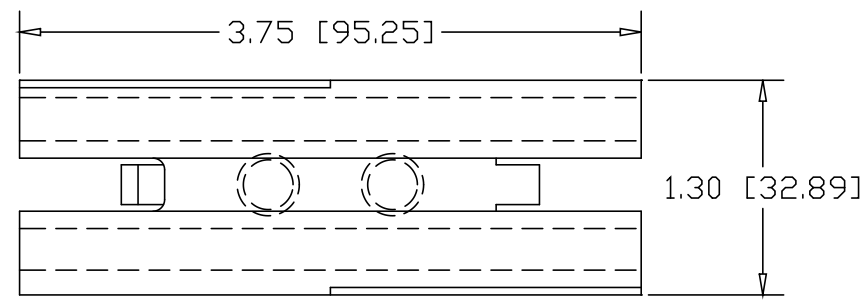
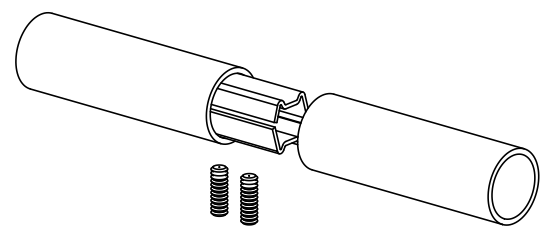
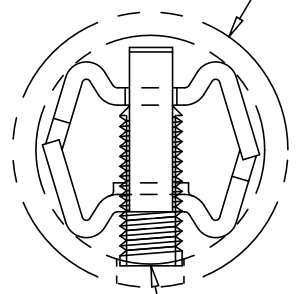


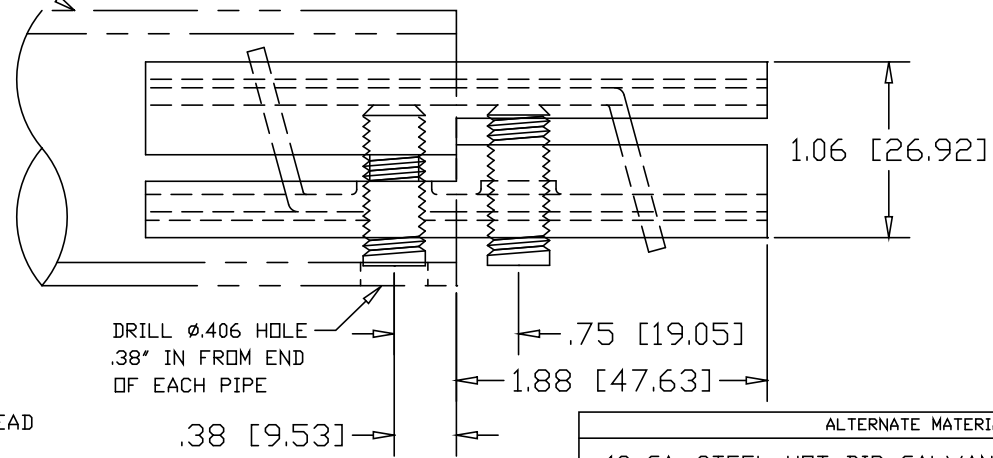
REVISIONS			
REV	DESCRIPTION	DATE	APPROVED



1-1/4" SCH40 PIPE
(1.66" O.D. X .140 WALL)




3/8-16 SOCKET HEAD
SET-SCREW
(2) PLACES



DRILL ϕ .406 HOLE
.38" IN FROM END
OF EACH PIPE

ALTERNATE MATERIAL	PART NO.
12 GA. STEEL HOT DIP GALVANIZED	G3354
12 GA. STEEL ZINC PLATED	PL3354
.090 (3003) ALUMINUM ASTM B209	3355
.090 (304) STAINLESS STEEL ASTM A240	3357

PART NAME		1-1/4" SCH40 PIPE DOUBLE-LOCK SPLICE-LOCK					
MATERIAL		12 GA. HRP&D STEEL ASTM A569					
DATE	3/22/93	 R & B WAGNER, INC.					
DRAWN BY	RJF						
FINISH	MILL						
SIZE	A	WEIGHT	.45 LBS	PART NUMBER	3354	REV	