

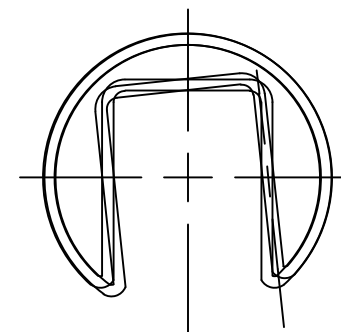
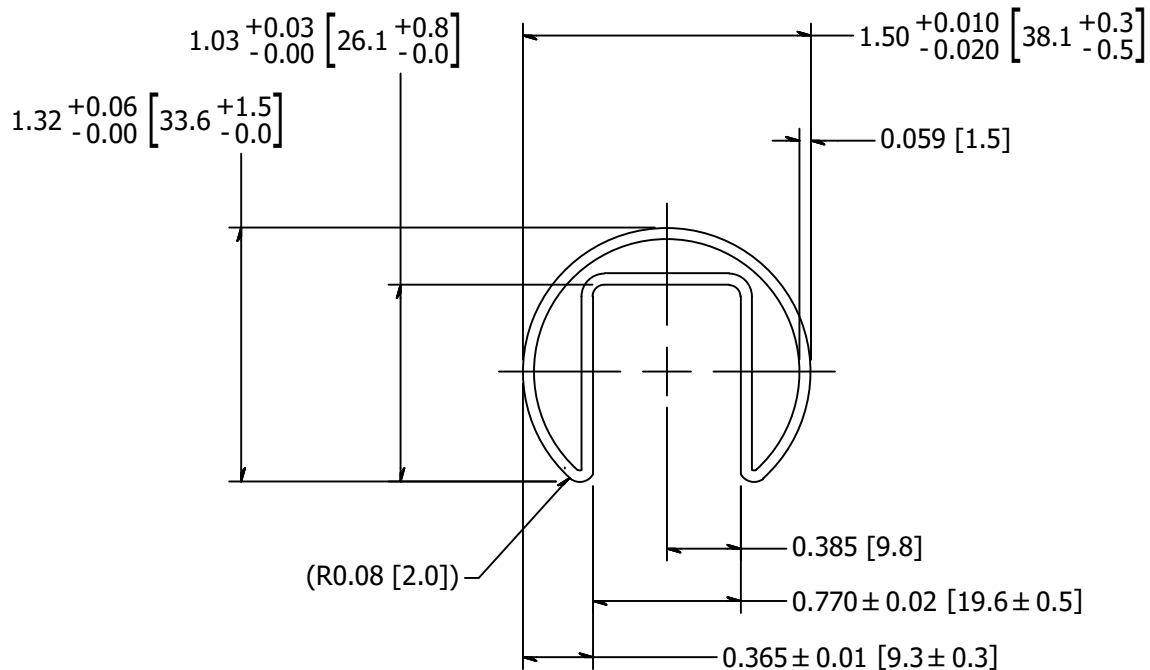
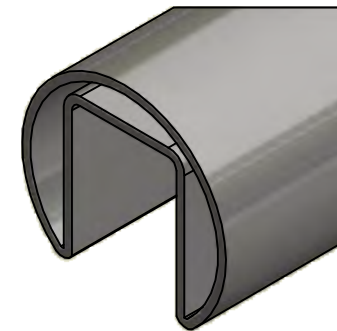
2



1

REVISION HISTORY

REV	DESCRIPTION	DATE	APPROVED
A	150 +.01/-.02 WAS 1.50 +0.0/-.02	4/4/2018	RJF



NOTE: MAXIMUM ALLOWABLE TWIST 0.5° PER FOOT WITH MAXIMUM 5.0° PER LENGTH

INCHES [MILLIMETERS]

TOLERANCE UNLESS OTHERWISE NOTED, TOLERANCES TO CONFORM TO ES.03.011	CUT LENGTH:	FINISH: #4 Satin	DESCRIPTION: 1.50" OD w/ .059" Wall, .770" Wide by 1.03" Deep, Type 316	
	DEVELOPED LENGTH:	WEIGHT: 27.73 lbmass	MATERIAL: Stainless Steel	MATERIAL DESC: 316 Stainless Steel
	TOOL NUMBER:		DATE: 4/4/2018	REV: -
			DRAWN BY: K. Bauserman	
			PART NUMBER: GR3152.4	
			WAGNER ™ COLLABORATIVE METALWORKS http://www.wagnercompanies.com/	
			10600 W Brown Deer Rd Milwaukee, WI 53224	

2



1

B

B



A

A