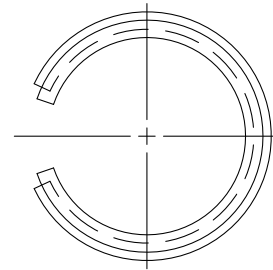
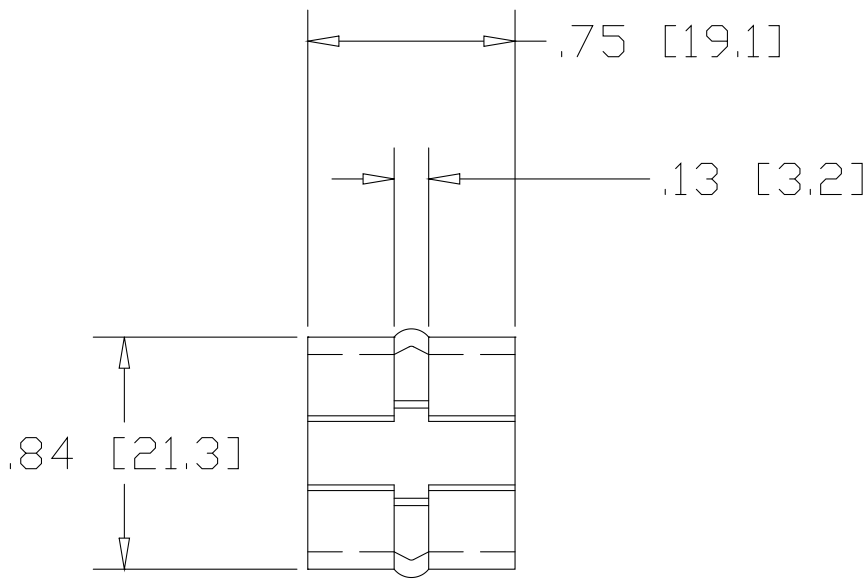
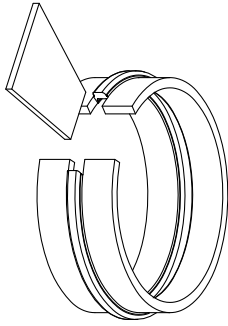



REV
SH
1008
DWG NO

| REVISIONS | | | |
|-----------|-------------|------|----------|
| REV | DESCRIPTION | DATE | APPROVED |



INCHES [MILLIMETERS]

| ALTERNATE MATERIAL | PART NUMBER |
|---------------------------------------|-------------|
| .063 (3003) ALUMINUM ASTM B209 | 1009 |
| .0595 (304) STAINLESS STEEL ASTM A240 | 1010 |

| | | | | |
|--|---|---|------------------|-----|
| PART NAME 1.00" OD .065W TUBE & 3/4" SCH40 PIPE WEDGE-LOCK WELDING CONNECTOR | | | | |
| MATERIAL 16 GA. (.063) HRP&D STEEL ASTM A569 | | | | |
| DATE 10/10/01 |  | THE WAGNER COMPANIES R & B WAGNER, INC. AND J. G. BRAUN CO. | | |
| DRAWN BY JAH | | | | |
| FINISH MILL | SIZE A | WEIGHT .03 LBS | PART NUMBER 1008 | REV |