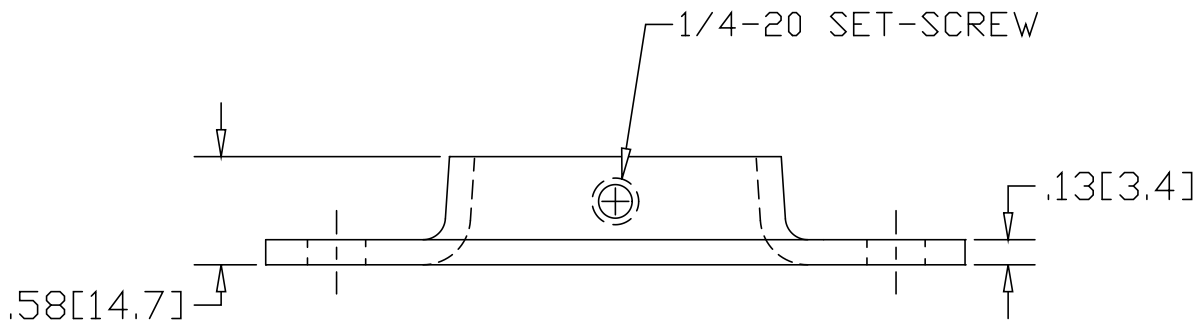
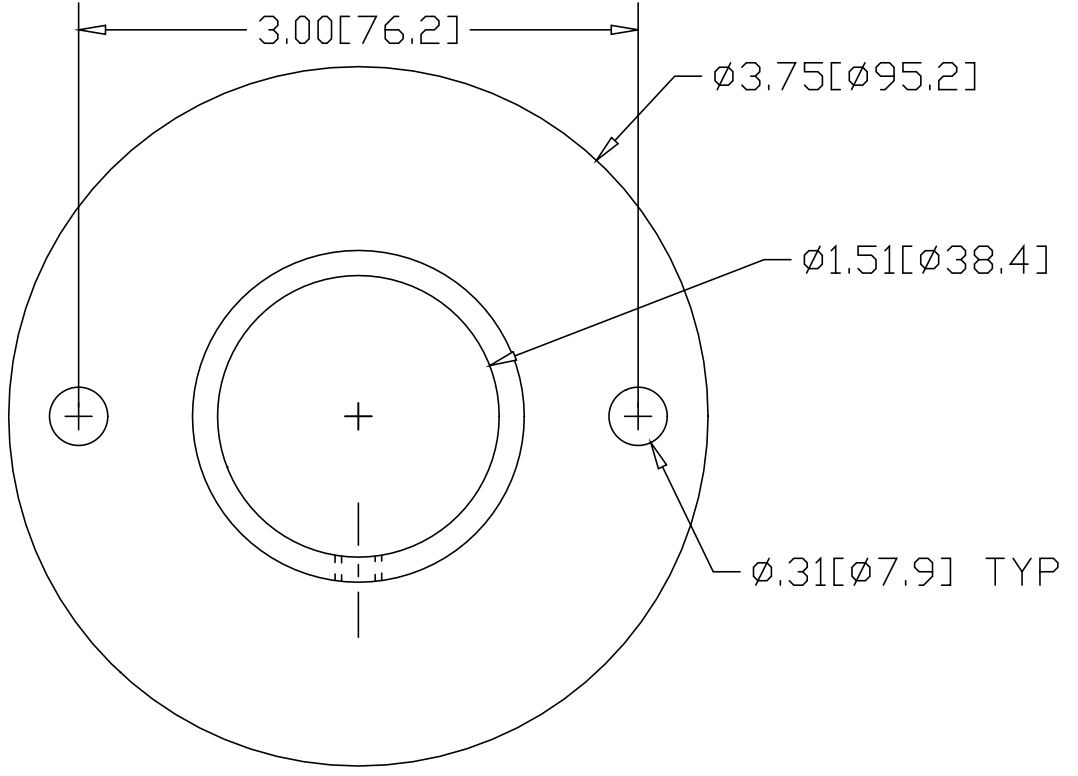


REV
SH
638T
DWG NO

REVISIONS			
REV	DESCRIPTION	DATE	APPROVED



INCHES [MILLIMETERS]

ALTERNATE MATERIAL	PART NUMBER
.125 (3003) ALUMINUM ASTM B209	678T
10 GA. (304) STAINLESS STEEL ASTM A240	718T

PART NAME 1-1/2" O.D. TUBE FLAT BASE FLANGE W/(2) HOLES AND SET-SCREW

MATERIAL 10 GA. HRP&O STEEL ASTM A-569

DATE 1/11/99
DRAWN BY RJF
FINISH MILL



R & B WAGNER, INC.

SIZE A	WEIGHT .42 lbs	PART NUMBER 638T	REV
--------	----------------	------------------	-----