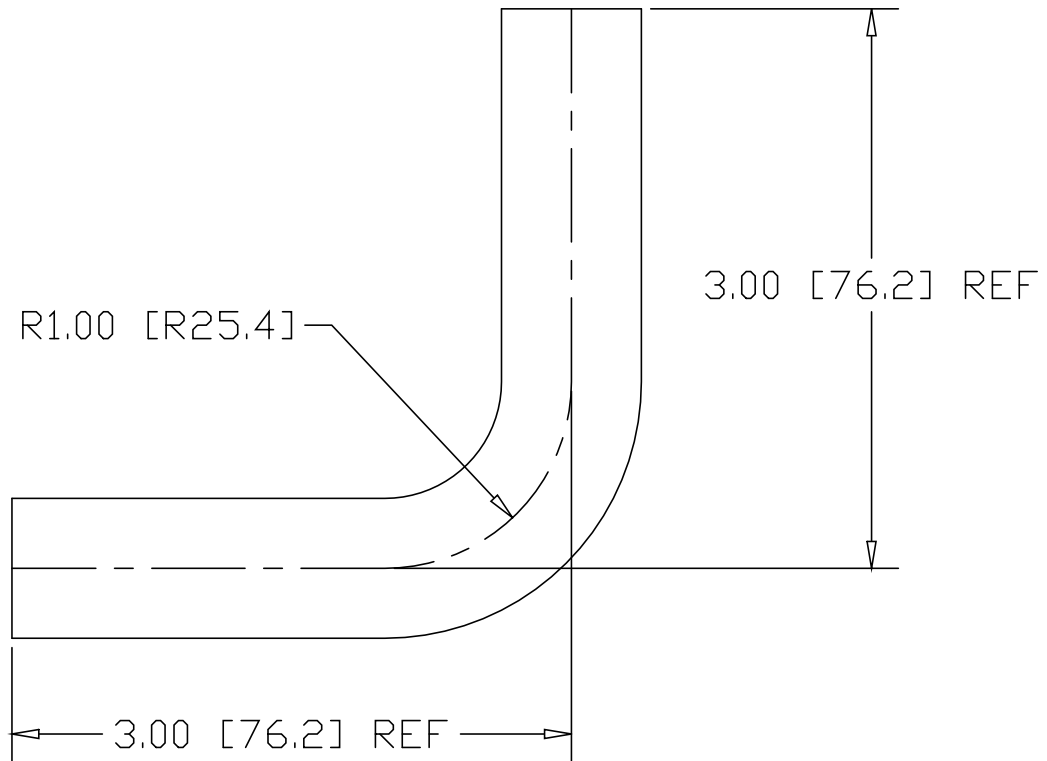
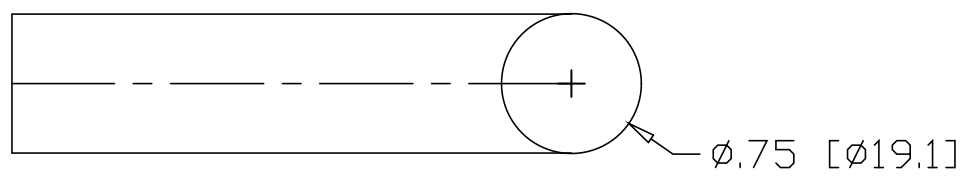


REV
A
SH
R170
DWG NO


REVISIONS			
REV	DESCRIPTION	DATE	APPROVED
A	CLR WAS 1.50	10/20/03	RJF



NOTE: ENDS UNTRIMMED

INCHES [MILLIMETERS]

ALTERNATE MATERIAL	PART NUMBER
3/4"φ 304 STAINLESS STEEL BAR	R180
3/4"φ 6063 ALUMINUM BAR	R260
3/4"φ 360 BRASS BAR	R190
3/4"φ 385 ARCH BRONZE BAR	R230

PART NAME		3/4"φ BAR BEND					
MATERIAL		3/4"φ COLD ROLLED STEEL BAR					
DATE	11/20/98	 THE WAGNER COMPANIES R & B WAGNER, INC. AND J. G. BRAUN CO.					
DRAWN BY	RJF						
FINISH	MILL						
SIZE	A	WEIGHT	.71 LBS	PART NUMBER	R170	REV	A