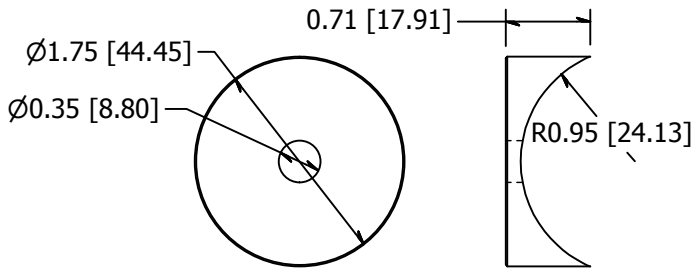


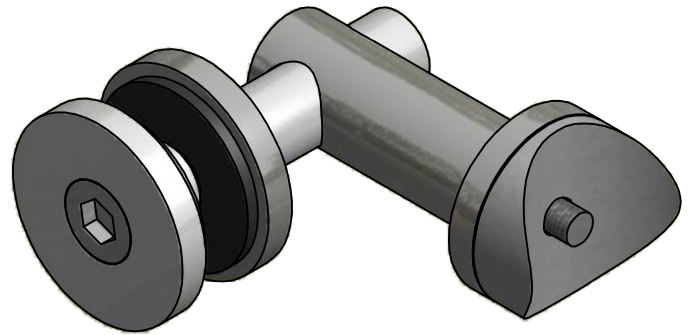
2



1

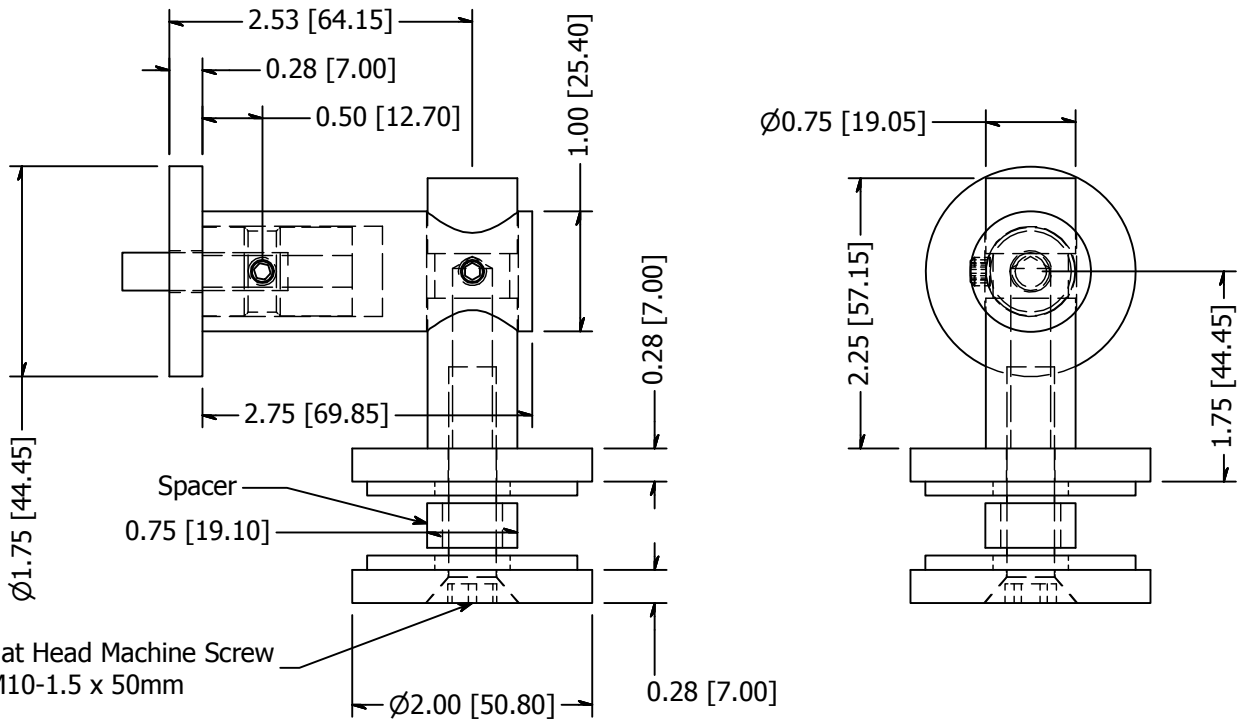
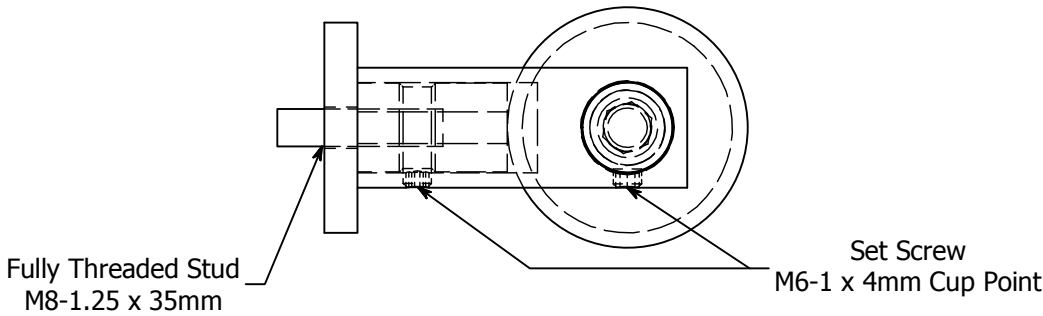


COPED ADAPTER (INCLUDED)



B

B



A

A

REVISION HISTORY

REV	DESCRIPTION	DATE	APPROVED
1	Added Groove	2/3/2015	TLK
2	Revised To Metric	3/24/2015	TLK
3	Changed stud thread	10/9/2015	KGB
4	Added Mounting Insert	3/31/16	TLK
5	M8-1.25 Threaded Stud Was M10-1.5	8/25/2016	TLK

<b>TOLERANCE</b> X.X..... = ± .060 X.XX..... = ± .030 X.XXX..... = ± .010  XX°..... = ± 1°  UNLESS OTHERWISE NOTED	MATERIAL: 316 Stainless
	FINISH: Brushed Satin
	WEIGHT: 1.46 lbmass

DESCRIPTION: Point Fitting, Stainless Steel, 51 mm Head, 1 Point, Tubular Body, Brushed Satin Finish, Grade 316, 0.50 Inch Glass	
DATE: 8/25/2016	REV: 5
DRAWN BY: T. Kolbach	
ITEM NUMBER: LXTB51-1	



2

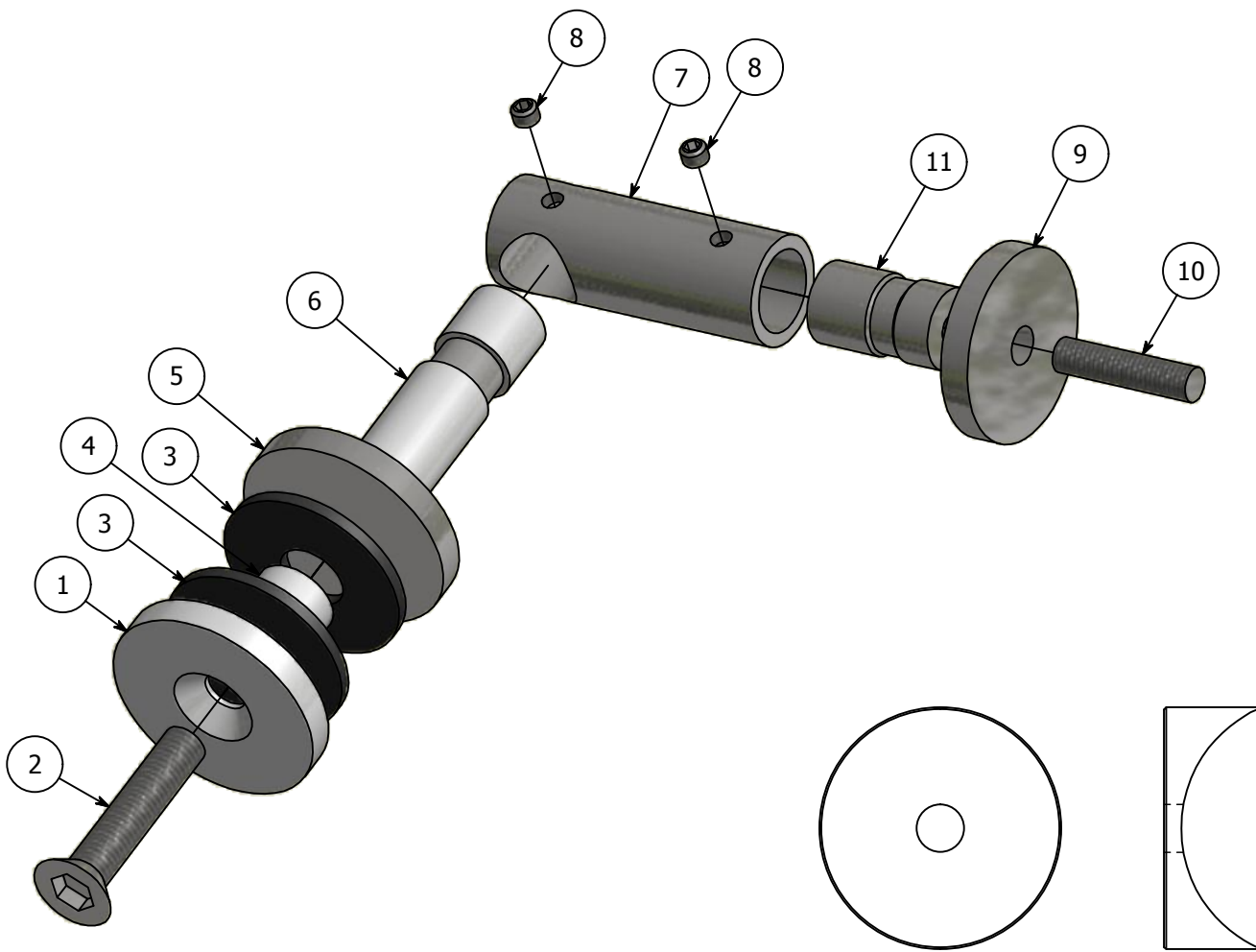


1



PARTS LIST

ITEM	QTY	PART NUMBER	DESCRIPTION
1	1	LXTB51-1A	Point Fitting, Stainless Steel, 50mm Countersunk Washer, Brushed Satin Finish, Grade 316
2	1	LXTB51-1B	Screw, Stainless Steel, M10-1.5 x 50mm, Socket Flat Head Machine Screw
3	2	LXTB51-1C	Washer, Rubber, 44.5mm OD x 16mm ID x 3mm Thick
4	1	LXTB51-1D	Spacer, Plastic, 19.1mm OD x 12.7mm ID x 9.5mm Long
5	1	LXTB51-1E	Point Fitting, Stainless Steel, 50mm Washer, Brushed Satin Finish, Grade 316
6	1	LXTB51-1F	Point Fitting, Stainless Steel, 19.1mm Diameter Tubular Body, Brushed Satin Finish, Grade 316
7	1	LXTB51-1G	Point Fitting, Stainless Steel, 25.4mm Diameter Tubular Body, Brushed Satin Finish, Grade 316
8	2	LXTB51-1H	Screw, Stainless Steel, M6-1 X 4mm, Cup Point Socket Set Screw
9	1	LXTB51-1I	Point Fitting, Stainless Steel, 44.5mm Washer, Brushed Satin Finish, Grade 316
10	1	LXTB51-1J	Threaded Stud, Stainless steel, M8-1.25 x 35mm Long, Fully Threaded Stud
11	1	LXTB51-1M	Point Fitting, Stainless Steel, 19.0mm Diameter Insert, As Machined Finish, Grade 316



**COPED ADAPTER (1 INCLUDED)**  
LXTB51-1K

<p><b>TOLERANCE</b></p> <p>X.X..... = ± .060</p> <p>X.XX..... = ± .030</p> <p>X.XXX..... = ± .010</p> <p>XX°..... = ± 1°</p> <p>UNLESS OTHERWISE NOTED</p>	MATERIAL:	316 Stainless			DESCRIPTION:	Point Fitting, Stainless Steel, 51 mm Head, 1 Point, Tubular Body, Brushed Satin Finish, Grade 316, 0.50 Inch Glass	
	FINISH:	Brushed Satin		DATE:	8/25/2016	REV:	5
	WEIGHT:	1.46 lbmass		DRAWN BY:	T. Kolbach		
					ITEM NUMBER:	LXTB51-1	



2

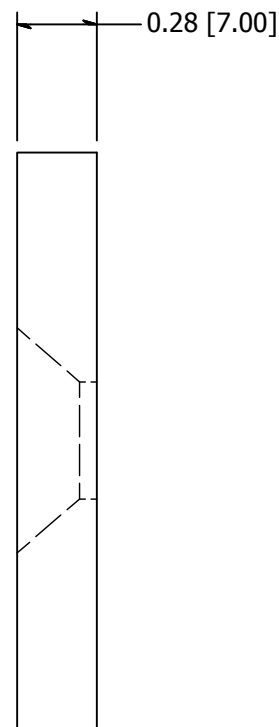
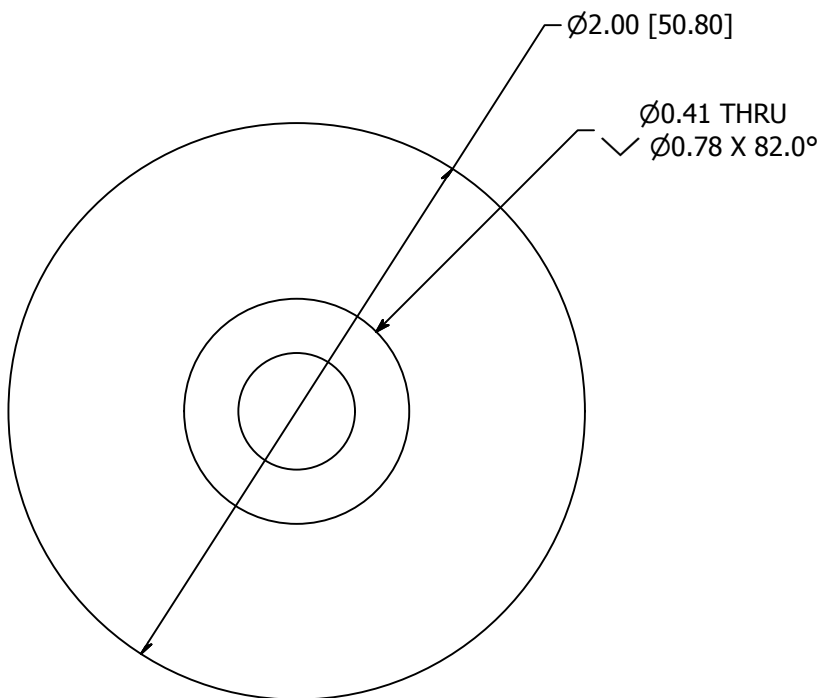


1



B

B



A

A

# LXTB51-1A

TOLERANCE	
X.X.....	= ± .060
X.XX.....	= ± .030
X.XXX.....	= ± .010
XX°.....	= ± 1°
UNLESS OTHERWISE NOTED	

MATERIAL:	316 Stainless
FINISH:	Brushed Satin
WEIGHT:	0.23 lbmass

REVISION HISTORY			
REV	DESCRIPTION	DATE	APPROVED
1	Update per Vendor Notes	3/18/2015	TLK

DESCRIPTION:  
Point Fitting, Stainless Steel, 50mm Countersunk Washer, Brushed Satin Finish, Grade 316

DATE:	8/25/2016	REV:	1
DRAWN BY:	T. Kolbach		
ITEM NUMBER:	LXTB51-1		



2



1

2

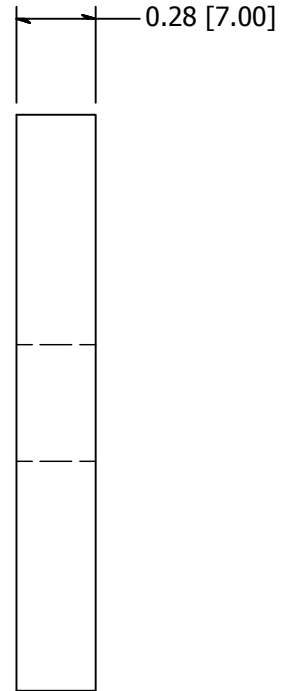
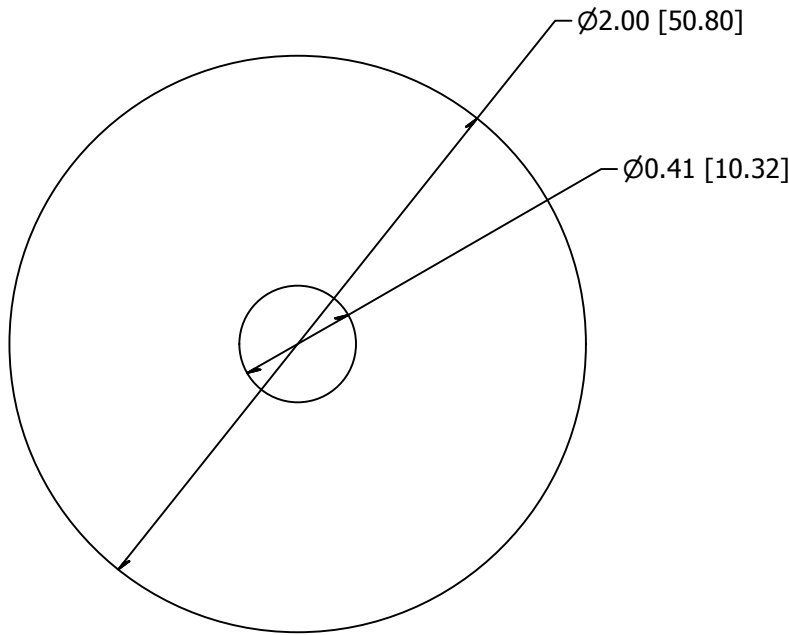


1



B

B



A

A

# LXTB51-1E

TOLERANCE
X.X..... = ± .060
X.XX..... = ± .030
X.XXX..... = ± .010
XX°..... = ± 1°
UNLESS OTHERWISE NOTED

MATERIAL: 316 Stainless
FINISH: Brushed Satin
WEIGHT: 0.24 lbmass

REVISION HISTORY			
REV	DESCRIPTION	DATE	APPROVED
1	Update Per vendor Notes	3/18/2015	TLK

DESCRIPTION: Point Fitting, Stainless Steel, 50mm Washer, Brushed Satin Finish, Grade 316			
DATE: 8/25/2016	REV: 1	 <b>WAGNER</b> COLLABORATIVE METAL WORKS	
DRAWN BY: T. Kolbach			
ITEM NUMBER: LXTB51-1			

2

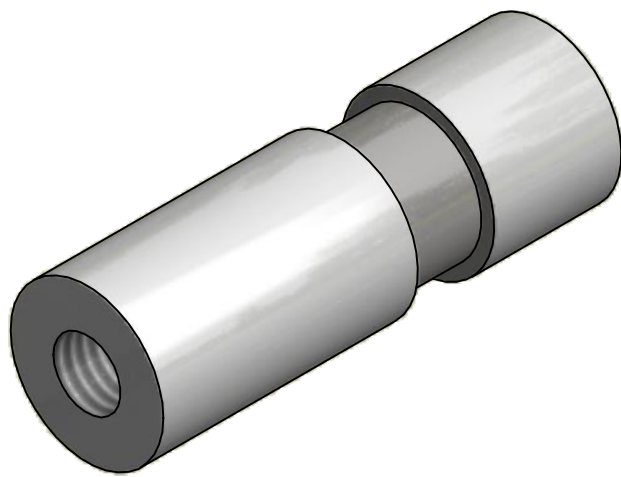


1

2



1

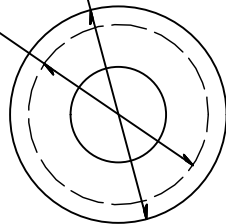


B

B

Ø0.75 [19.05]

Ø0.63 [15.88]



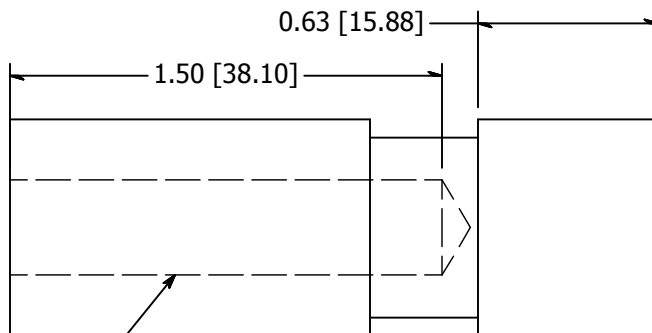
0.63 [15.88]

1.50 [38.10]

M10x1.5 - 6H

0.38 [9.53]

0.63 [15.88]



A

A

# LXTB51-1F

### REVISION HISTORY

REV	DESCRIPTION	DATE	APPROVED
1	Added Groove	1/27/2015	TLK
2	Update per vendors notes	3/18/2015	TLK

TOLERANCE	
X.X.....	= ± .060
X.XX.....	= ± .030
X.XXX.....	= ± .010
XX°.....	= ± 1°
UNLESS OTHERWISE NOTED	

MATERIAL:	316 Stainless
FINISH:	Brushed Satin
WEIGHT:	0.23 lbmass

DESCRIPTION: Point Fitting, Stainless Steel, 19.1mm Diameter Tubular Body, Brushed Satin Finish, Grade 316			
DATE:	8/25/2016	REV:	2
DRAWN BY:	T. Kolbach		
ITEM NUMBER:	LXTB51-1		



2



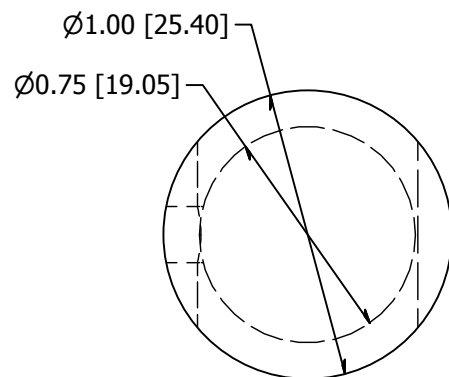
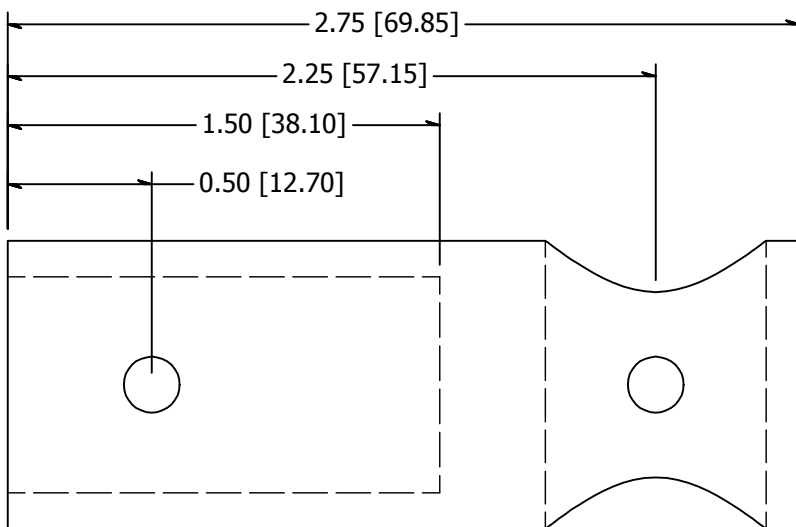
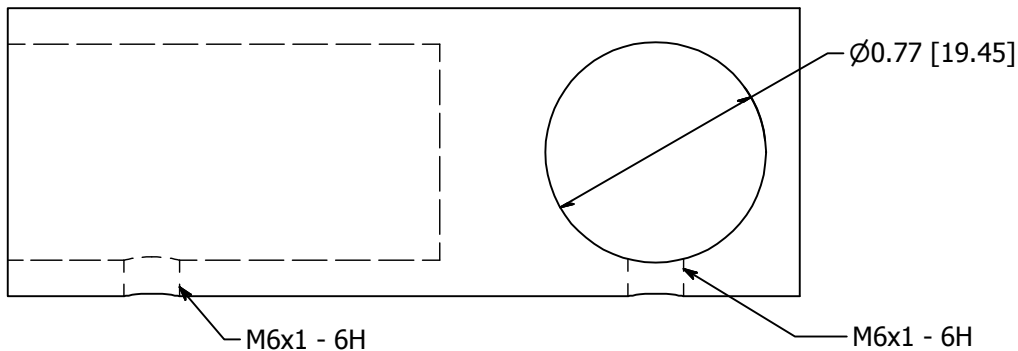
1

2

1

B

B



A

A

# LXTB51-1G

## REVISION HISTORY

REV	DESCRIPTION	DATE	APPROVED
1	Revised Per Vendors Notes	3/18/2015	TLK
2	Revised Stud Thread	10/9/2015	KGB
3	Added Mounting Collar	4/6/2016	TLK

<b>TOLERANCE</b>	MATERIAL:
X.X..... = ± .060	316 Stainless
X.XX..... = ± .030	FINISH:
X.XXX..... = ± .010	Brushed Satin
XX°..... = ± 1°	WEIGHT:
UNLESS OTHERWISE NOTED	0.31 lbmass

DESCRIPTION:		DATE:		REV:	4
Point Fitting, Stainless Steel, 25.4mm Diameter Tubular Body, Brushed Satin Finish, Grade 316		8/25/2016			
DRAWN BY:		T. Kolbach		ITEM NUMBER:	
LXTB51-1		WAGNER			
		COLLABORATIVE METAL WORKS			

2

1



2

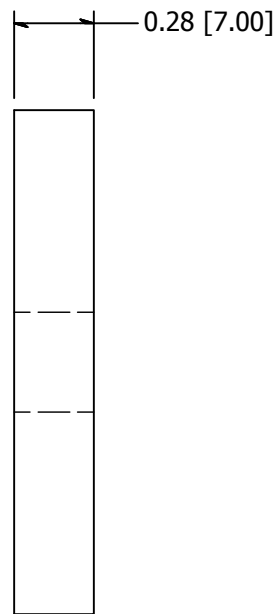
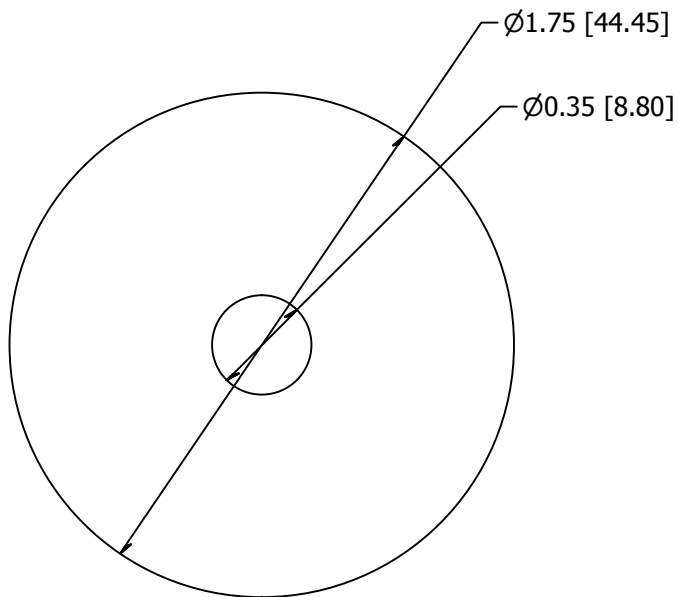


1



B

B



A

A

# LXTB51-1I

REVISION HISTORY			
REV	DESCRIPTION	DATE	APPROVED
1	Center hole was 8.8mm	11/9/2015	KGB
2	Center hole was 10.3mm	8/25/2016	TLK

<b>TOLERANCE</b> X.X..... = ± .060 X.XX..... = ± .030 X.XXX..... = ± .010  XX°..... = ± 1°  UNLESS OTHERWISE NOTED	MATERIAL: 316 Stainless
	FINISH: Brushed Satin
	WEIGHT: 0.18 lbmass

DESCRIPTION: Point Fitting, Stainless Steel, 44.5mm Washer, Brushed Satin Finish, Grade 316		DATE: 8/25/2016	REV: 2
DRAWN BY: T. Kolbach		 <b>WAGNER</b> COLLABORATIVE METAL WORKS	
ITEM NUMBER: LXTB51-1			

2

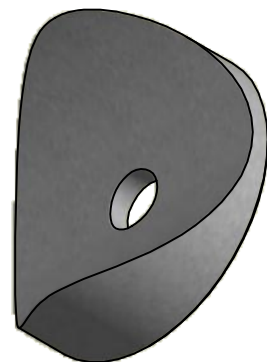


1

2

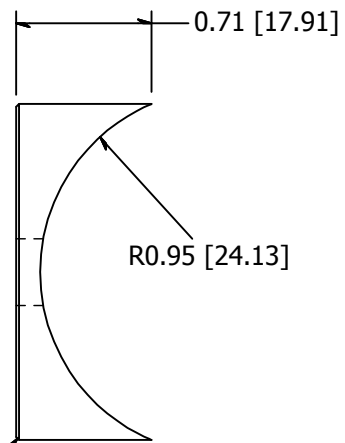
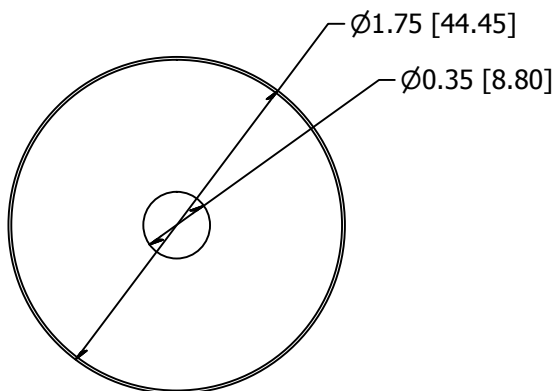


1



B

B



.02 X 45° Chamfer

A

A

# LXTB51-1K

REVISION HISTORY			
REV	DESCRIPTION	DATE	APPROVED
1	Revised Cetera Hole, Was 10.3mm	8/25/2016	TLK

<b>TOLERANCE</b> X.X.....= ± .060 X.XX.....= ± .030 X.XXX.....= ± .010  XX°.....= ± 1°  UNLESS OTHERWISE NOTED	MATERIAL: 316 Stainless
	FINISH: Brushed Satin
	WEIGHT: 0.17 lbmass

DESCRIPTION: Point Fitting, Stainless Steel,Coped Adaper, Brushed Satin Finish, Grade 316	
DATE: 8/25/2016	REV: 1
DRAWN BY: T. Kolbach	
ITEM NUMBER: LXTB51-1	



2

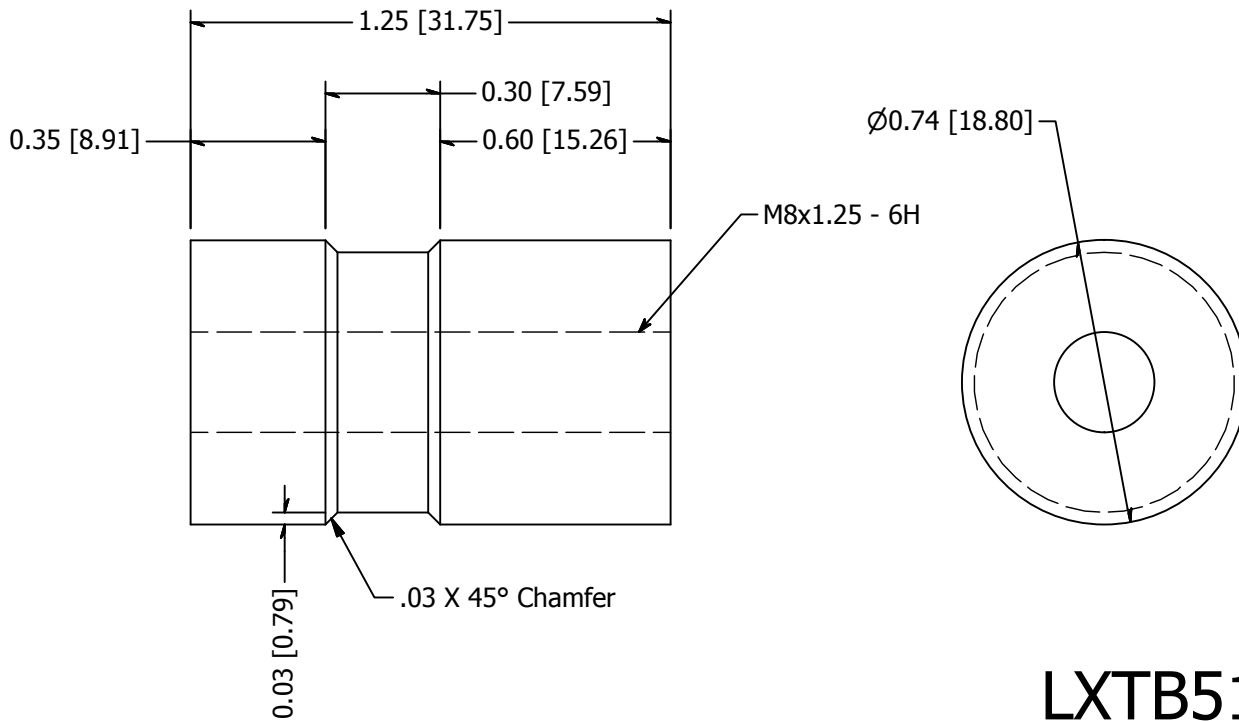
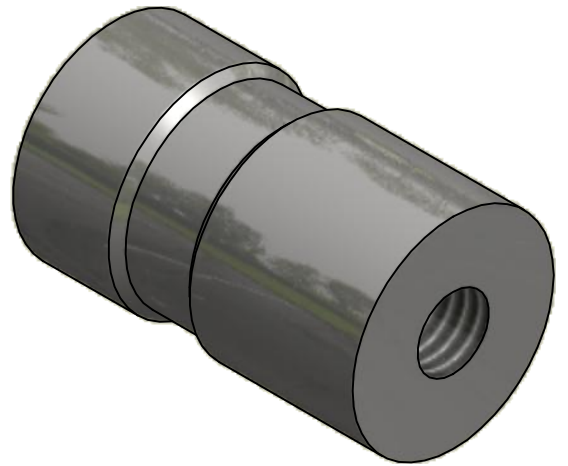


1



2

1



# LXTB51-1M


TOLERANCE	
X.X.....	= ± .060
X.XX.....	= ± .030
X.XXX.....	= ± .010
XX°.....	= ± 1°
UNLESS OTHERWISE NOTED	

MATERIAL:	316 Stainless
FINISH:	Brushed Satin
WEIGHT:	0.13 lbmass

REVISION HISTORY			
REV	DESCRIPTION	DATE	APPROVED
1	Revised M10-1.5 thread to M8-1.25	8/25/2016	TLK

DESCRIPTION:  
Point Fitting, Stainless Steel, 19.0mm Daimeter Insert, As Machined Finish, Grade 316

DATE:	8/25/2016	REV:	1
DRAWN BY:	T. Kolbach		
ITEM NUMBER:	LXTB51-1		



WAGNER  
COLLABORATIVE METAL WORKS

2

1

