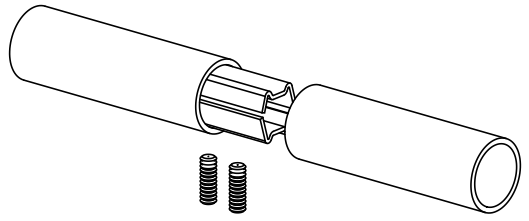
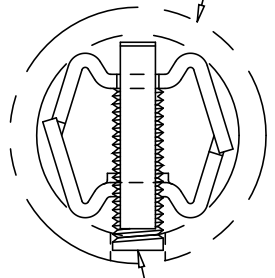


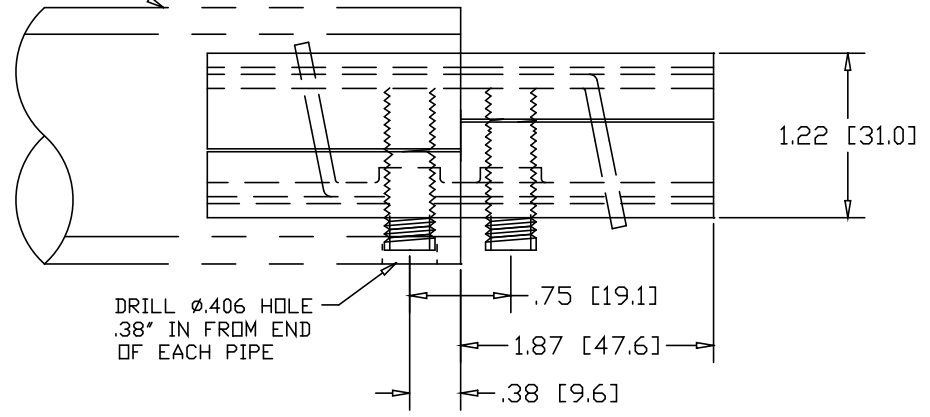
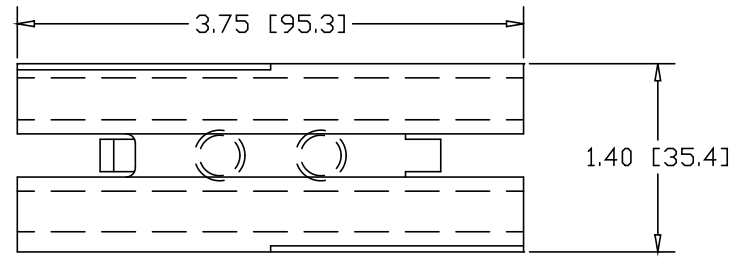
REVISIONS			
REV	DESCRIPTION	DATE	APPROVED



1-1/2" SCHEDULE 80 PIPE  
(1.90 OD X .200 WALL)




3/8-16  
SOCKET HEAD  
SET-SCREW  
(2) PLACES



DRILL  $\phi$ .406 HOLE  
.38" IN FROM END  
OF EACH PIPE

INCHES [MILLIMETERS]

ALTERNATE MATERIAL	PART NO.
12 GA. STEEL HOT DIP GALVANIZED	G3388
12 GA. STEEL ZINC PLATED	PL3388
.090 (3003) ALUMINUM ASTM B209	3359H

PART NAME		1-1/2" SCH80 PIPE DOUBLE-LOCK SPLICE-LOCK		
MATERIAL		12 GA. HRP&O STEEL ASTM A569		
DATE	9/17/01		<b>THE WAGNER COMPANIES</b> R & B WAGNER, INC. AND J. G. BRAUN CO.	
DRAWN BY	JAH			
FINISH	MILL	SIZE	WEIGHT	PART NUMBER
		A	.47 LBS	3388
				REV