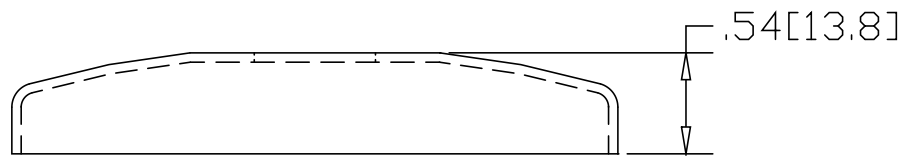
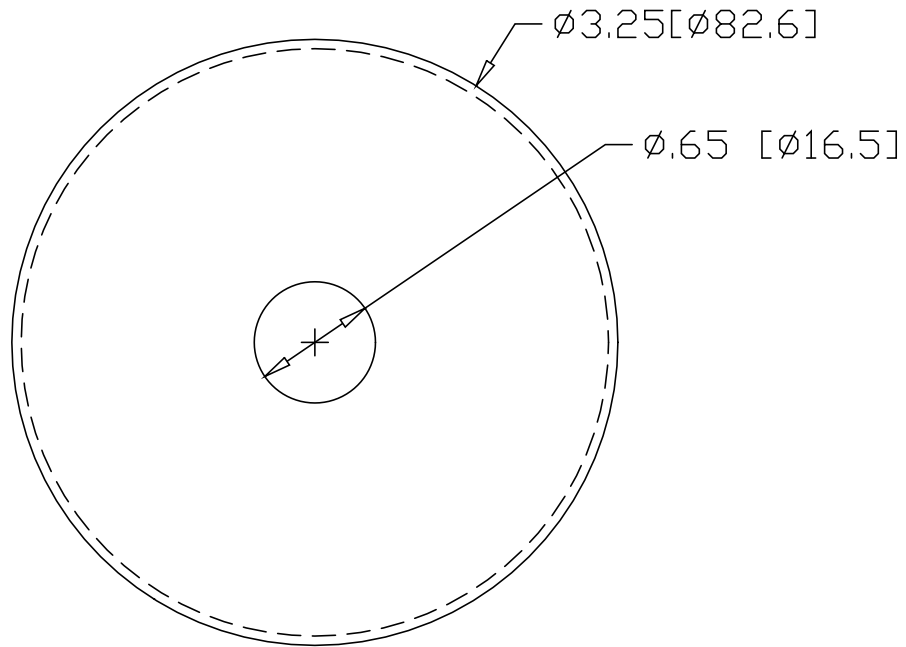


REV  
SH  
2031  
DWG NO


REVISIONS			
REV	DESCRIPTION	DATE	APPROVED



\* USE WITH BASE  
#2031B IN STEEL  
#2032B IN ALUMINUM  
#2033B IN STAINLESS  
#2034B IN BRASS

INCHES [MILLIMETERS]

ALTERNATE MATERIAL	PART NUMBER
.063 (3003) ALUMINUM ASTM B209	2032
18 GA. (304) STAINLESS STEEL A240	2033
.050 (260) BRASS B19,B36	2034

PART NAME		.63" OD TUBE SNAP COVER		
MATERIAL		18 GA. CR STEEL ASTM A366		
DATE	01/07/03	 <b>R &amp; B WAGNER, INC.</b>		
DRAWN BY	RJF			
FINISH	MILL	SIZE	WEIGHT	PART NUMBER
		A	.13 LBS	2031
				REV