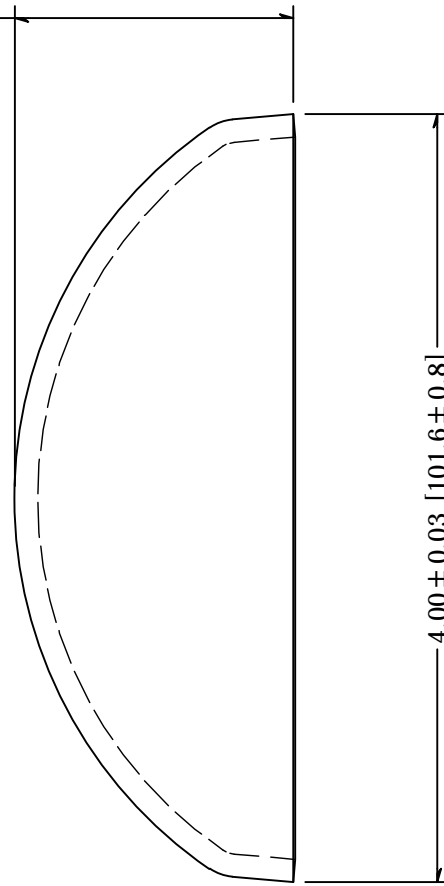


1.45 ± 0.03 [36.8 ± 0.8]



4.00 ± 0.03 [101.6 ± 0.8]



REVISION HISTORY		
REV	DESCRIPTION	DATE
1	UPDATE FOR LASER BLANKING	1/23/2023

TOLERANCE UNLESS OTHERWISE NOTED, TOLERANCES TO CONFORM TO ES.03.011	CUT LENGTH:	FINISH:	DESCRIPTION:
		Mill	End Cap, Steel, Type C, For 3-1/2 Inch Pipe (4.00 Inch Diameter) Weld-On, Domed
	DEVELOPED LENGTH:	WEIGHT:	MATERIAL:
		0.67 lbmass	S310
	TOOL NUMBER:		MATERIAL DESC:
	TL8716		11GA Sheet Steel 48 X 120 X .119, Pickled and Oiled
			DATE:
			1/23/2023
			DRAWN BY:
			P. Krueger
			REV:
			1
			PART NUMBER:
			3225-2


WAGNER
 COLLABORATIVE METALWORKS

10600 W Brown Deer Rd
 Milwaukee, WI 53224
<http://www.wagnercompanies.com/>



2

1

2

1

B

B

A

A