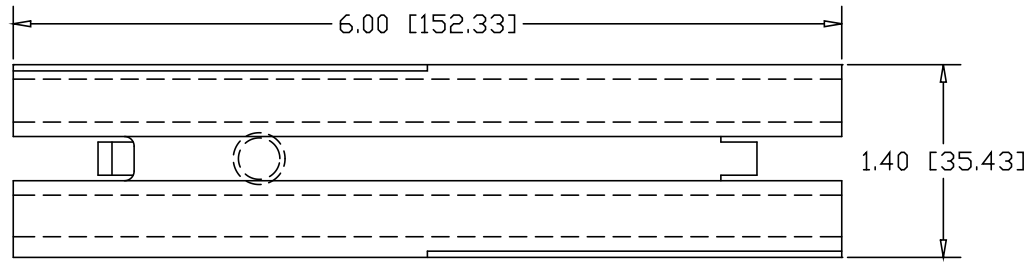
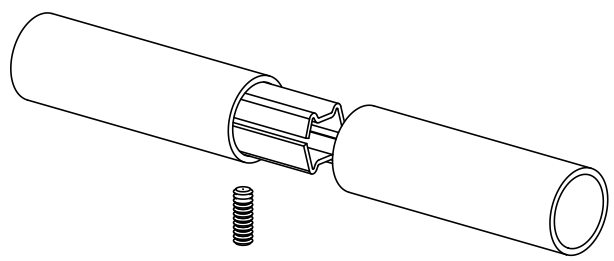
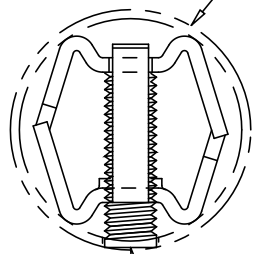


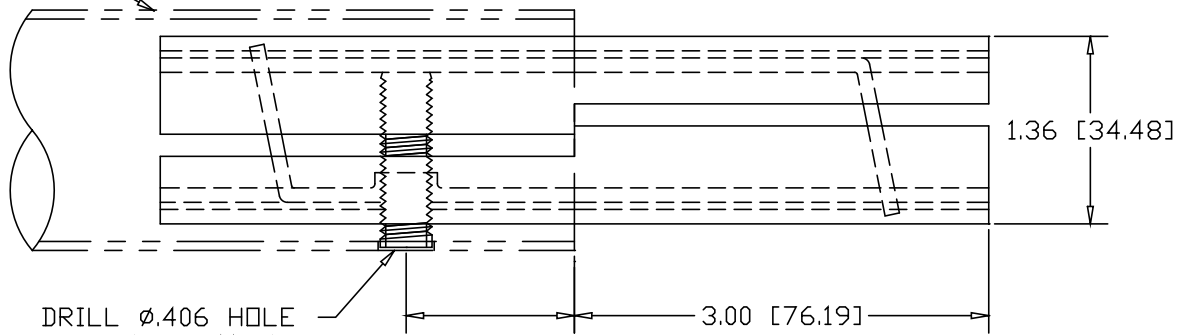
REVISIONS			
REV	DESCRIPTION	DATE	APPROVED



2.00" O.D. X .065W TUBE



3/8-16 X 1-3/8" SOCKET HEAD SET-SCREW




DRILL Ø.406 HOLE 1.22" IN FROM END

INCHES [MILLIMETERS]

NOTE: SAME SPLICE-LOCK ALSO USED FOR:
1-1/2" SCH 40 PIPE (PT. #3324)
AND 2" O.D. X .120W TUBE

ALTERNATE MATERIAL	PART NO.
12 GA. STEEL HOT DIP GALVANIZED	G3338-6
12 GA. STEEL ZINC PLATED	PL3338-6
.090 (3003) ALUMINUM ASTM B209	3328-6
.090 (304) STAINLESS STEEL ASTM A240	3335-6

PART NAME		2.00" OD X .065W TUBE SINGLE-LOCK SPLICE-LOCK 6" LONG		
MATERIAL		12 GA. HRP&O STEEL ASTM A569		
DATE	3/22/93	 R & B WAGNER, INC.		
DRAWN BY	RJF			
FINISH	MILL	SIZE	WEIGHT	PART NUMBER
		A	.88 LBS	3338-6
				REV