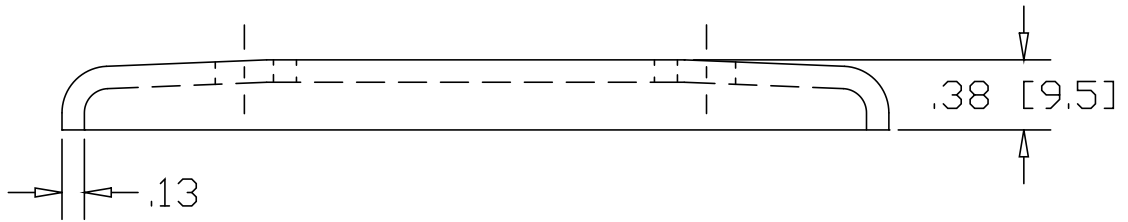
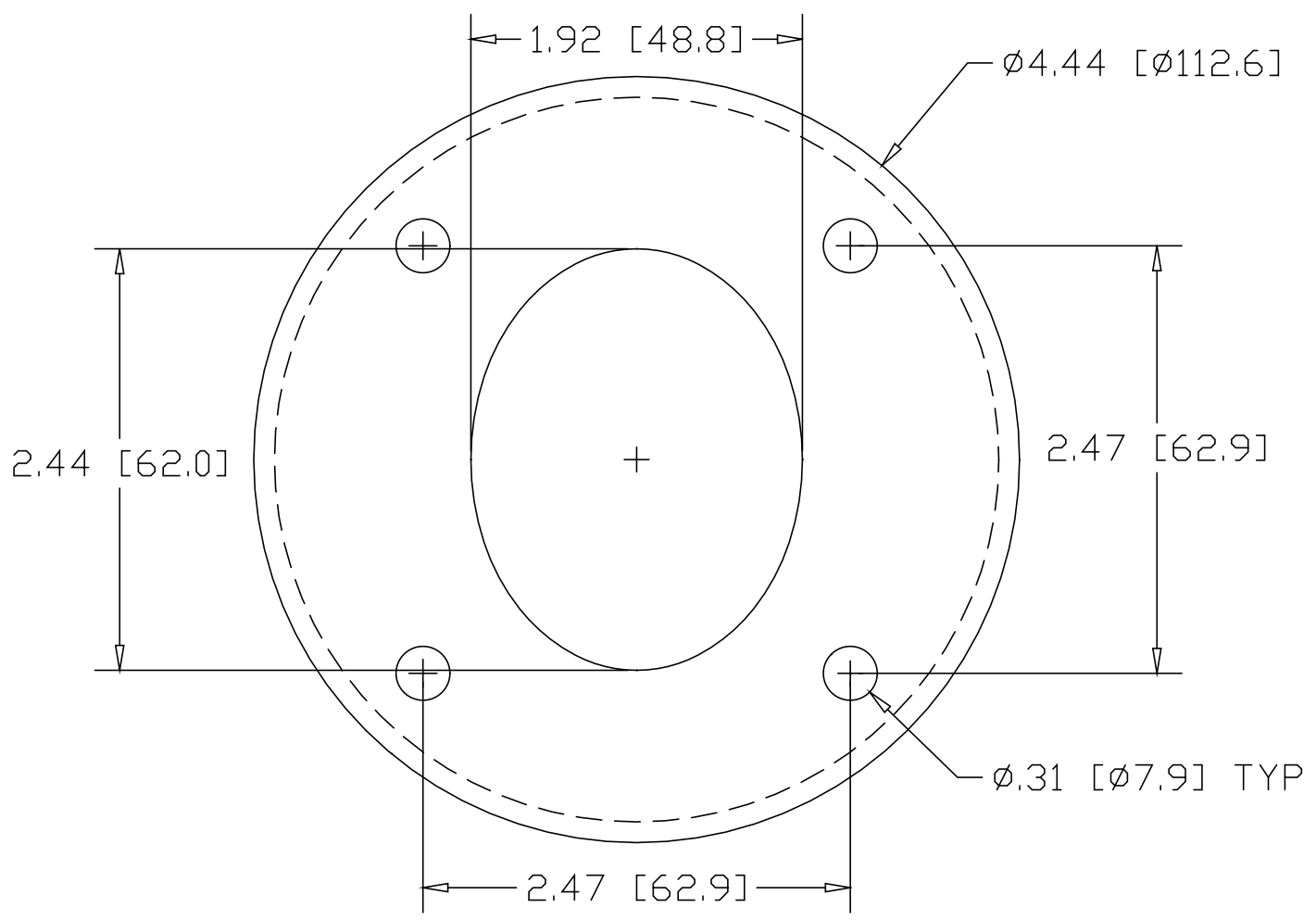



REV  
SH  
2836  
DWG NO

REVISIONS			
REV	DESCRIPTION	DATE	APPROVED



INCHES [MILLIMETERS]

ALTERNATE MATERIAL	PART NUMBER
.125 (3003) ALUMINUM ASTM B209	2876
10 GA. (304) STAINLESS STEEL ASTM A240	2916

PART NAME 1-1/2" PIPE HEAVY FLUSH BASE BEVELED FLANGE W/(4) HOLES				
MATERIAL 10 GA. HRP&D STEEL ASTM A569				
DATE 9/6/94	 <b>THE WAGNER COMPANIES</b> R & B WAGNER, INC. AND J. G. BRAUN CO.			
DRAWN BY RJF		SIZE A	WEIGHT .63 LBS	PART NUMBER 2836
FINISH MILL				REV