

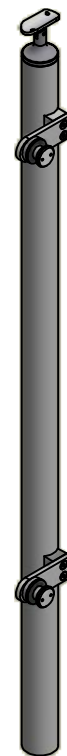
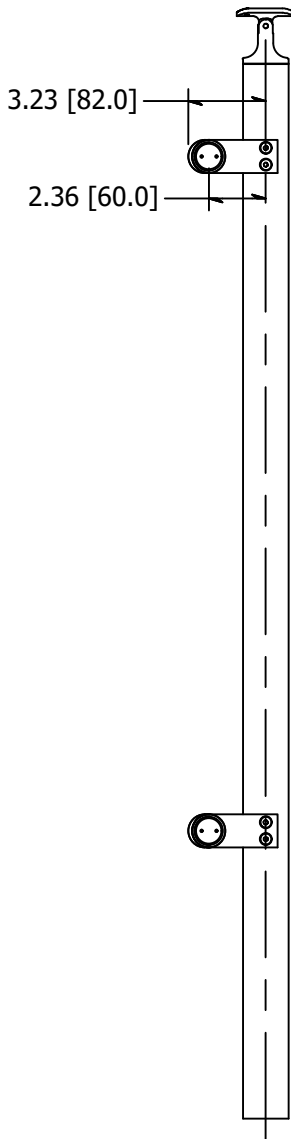
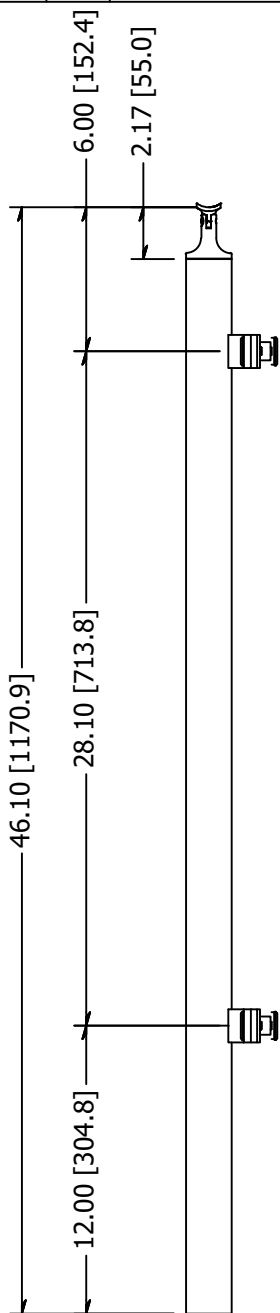


PARTS LIST

ITEM	QTY	PART NUMBER	DESCRIPTION
1	1	LG31942FEMA	Post, Stainless Steel, 1-1/2 Inch Pipe (1.90 OD) Sch 40, 42 High, Brushed Satin Finish, Grade 316, Embed Mount, Post Assembly
2	2	LXFP30-1	Point Fitting, Stainless Steel, 30 mm Head, 1 Point, Flat Plate, Brushed Satin Finish, Grade 316, 0.50 Inch Glass
3	2	LXFP30-1.90	Point Fitting, Stainless Steel, 1.90" OD Adapter, Brushed Satin Finish, Grade 316, 0.50 Inch Glass
4	4	FAH3NM06C-0030	Screw, Stainless Steel, M6-1.0 x 30mm, Socket Flat Head Machine Screw, A4-70
5	1	SS507	SADDLE, SWIVEL, CAST W/ HOLES

B

B



A

A

REVISION HISTORY		
REV	DESCRIPTION	DATE
2	Drawing Update	6/25/2019

TOLERANCE UNLESS OTHERWISE NOTED, TOLERANCES TO CONFORM TO ES.03.011	MATERIAL: 316 Stainless	DESCRIPTION: End Post, Stainless Steel, 1-1/2 Inch Pipe (1.90 OD) Sch 40, 42 High, Brushed Satin Finish, Grade 316, Embed Mount, Flat Plate	
	FINISH: Satin Brushed	DATE: 6/25/2019	REV: 2
	WEIGHT: 12.63 lbmass	DRAWN BY: T. Kolbach	
	ITEM NUMBER: LG31942DEEM.4		

WAGNER™ 10600 W Brown Deer Rd
 Milwaukee, WI 53224
 COLLABORATIVE METALWORKS <http://www.wagnercompanies.com/>

