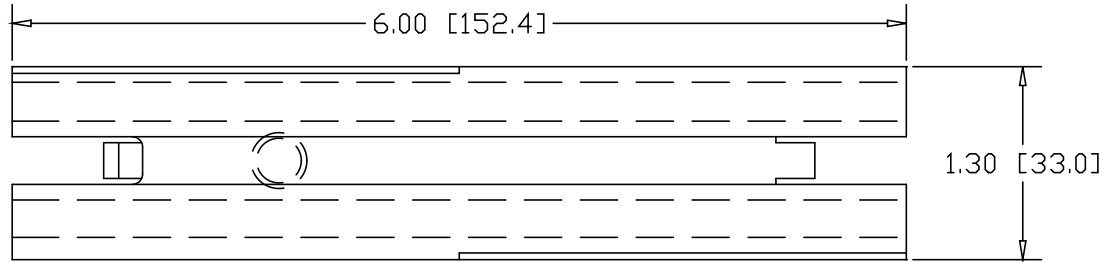
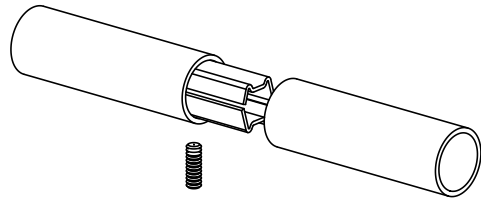
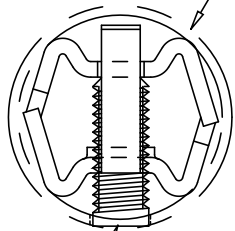


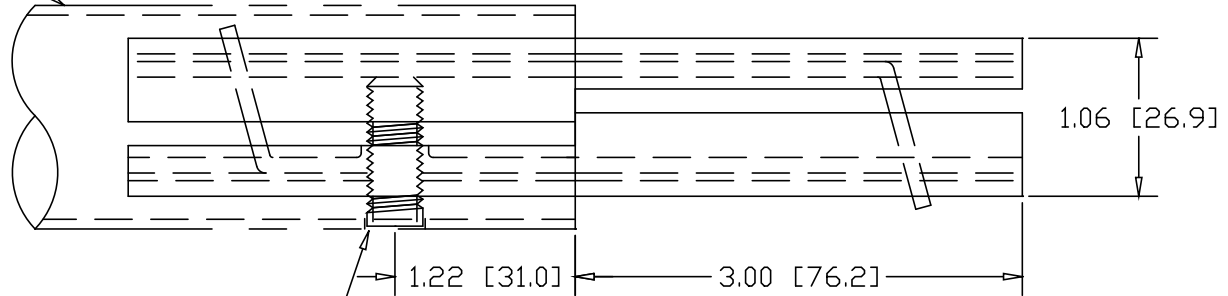
REVISIONS			
REV	DESCRIPTION	DATE	APPROVED



1.50" OD .065W TUBE




3/8-16 SOCKET HEAD SET-SCREW



DRILL ϕ .406 HOLE
1.22" IN FROM END

INCHES [MILLIMETERS]

ALTERNATE MATERIAL	PART NO.
12 GA. STEEL HOT DIP GALVANIZED	G3326-6
12 GA. STEEL ZINC PLATED	PL3326-6
.090 (3003) ALUMINUM ASTM B209	3327-6
.090 (304) STAINLESS STEEL ASTM A240	3329-6

PART NAME 1.50" OD .065W TUBE SINGLE-LOCK SPLICE-LOCK 6" LONG				
MATERIAL 12 GA. HRP&D STEEL ASTM A569				
DATE 9/17/01	 THE WAGNER COMPANIES R & B WAGNER, INC. AND J. G. BRAUN CO.			
DRAWN BY RJF				
FINISH MILL	SIZE A	WEIGHT .73 LBS	PART NUMBER 3326-6	REV