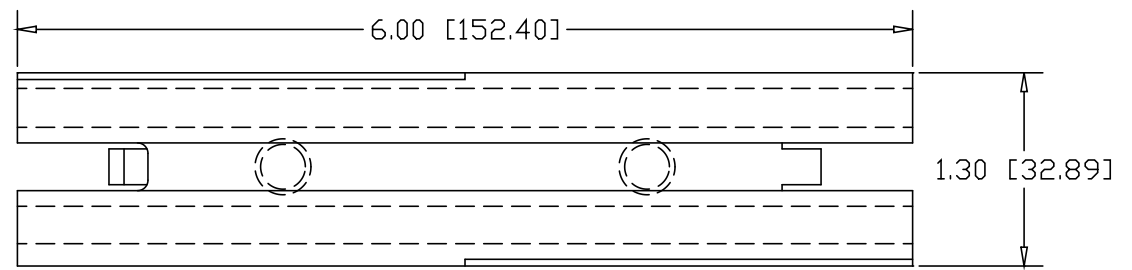
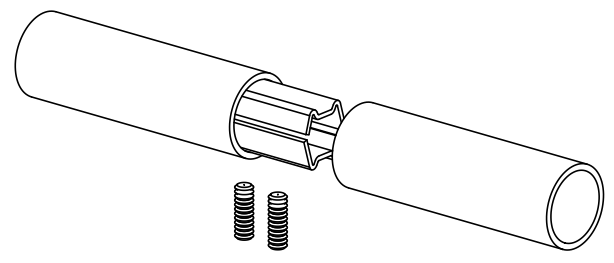
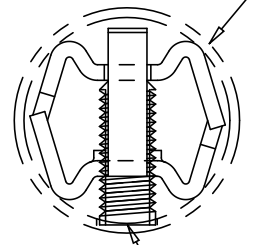


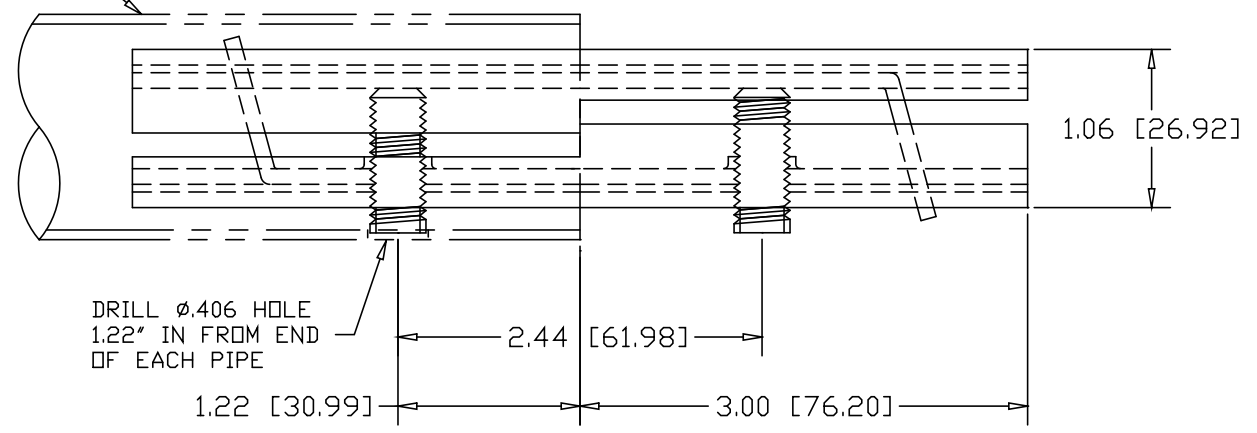
REVISIONS			
REV	DESCRIPTION	DATE	APPROVED



1.50" O.D. X .065W TUBE




3/8-16 SOCKET HEAD SET-SCREW



DRILL ϕ .406 HOLE
1.22" IN FROM END
OF EACH PIPE

ALTERNATE MATERIAL	PART NO.
12 GA. STEEL HOT DIP GALVANIZED	G3366-6
12 GA. STEEL ZINC PLATED	PL3366-6
.090 (3003) ALUMINUM ASTM B209	3367-6
.090 (304) STAINLESS STEEL ASTM A240	3369-6

PART NAME				1.50" OD X .065W TUBE DOUBLE-LOCK SPLICE-LOCK 6" LONG			
MATERIAL				12 GA. HRP&D STEEL ASTM A569			
DATE		5/25/93		 R & B WAGNER, INC.			
DRAWN BY		RJF					
FINISH		MILL					
SIZE	WEIGHT	PART NUMBER	REV	.25 LBS		3366-6	
A							