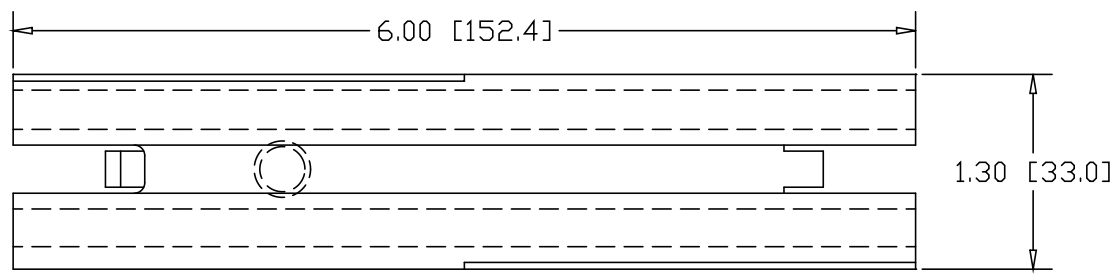
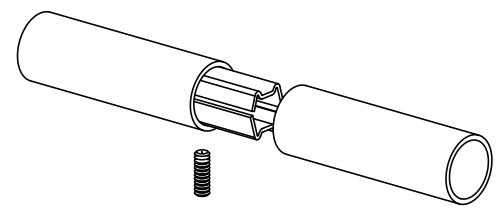
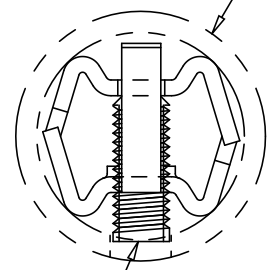


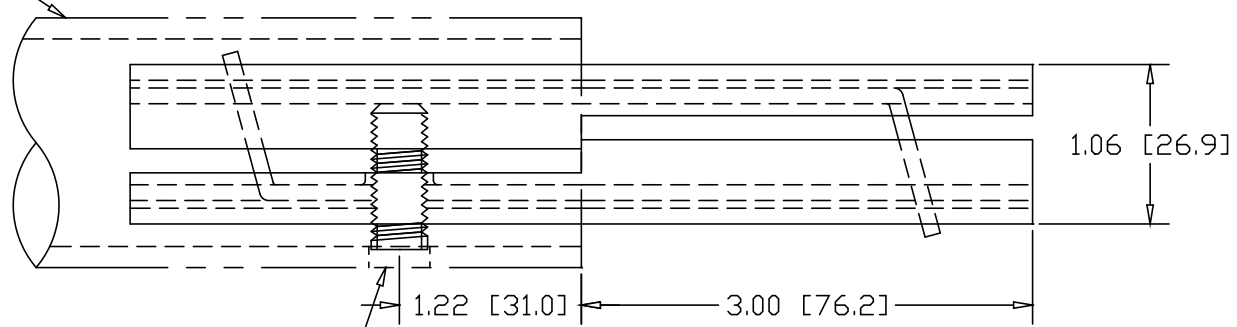
REVISIONS			
REV	DESCRIPTION	DATE	APPROVED



1-1/4" SCHEDULE 40 PIPE
(1.66 O.D. X .140 WALL)




3/8-16 SOCKET HEAD
SET-SCREW



DRILL ϕ .406 HOLE
1.22" IN FROM END

INCHES [MILLIMETERS]

ALTERNATE MATERIAL	PART NO.
12 GA. STEEL HOT DIP GALVANIZED	G3320
12 GA. STEEL ZINC PLATED	PL3320
.090 (3003) ALUMINUM ASTM B209	3342
.090 (304) STAINLESS STEEL ASTM A240	3348-6

PART NAME				1-1/4" SCH40 PIPE SINGLE-LOCK SPLICE-LOCK 6" LONG				
MATERIAL				12 GA. HRP&D STEEL ASTM A569				
DATE	3/22/93		THE WAGNER COMPANIES R & B WAGNER, INC. AND J. G. BRAUN CO.					
DRAWN BY	RJF							
FINISH	MILL	SIZE	A	WEIGHT	.73 LBS	PART NUMBER	3320	
							REV	