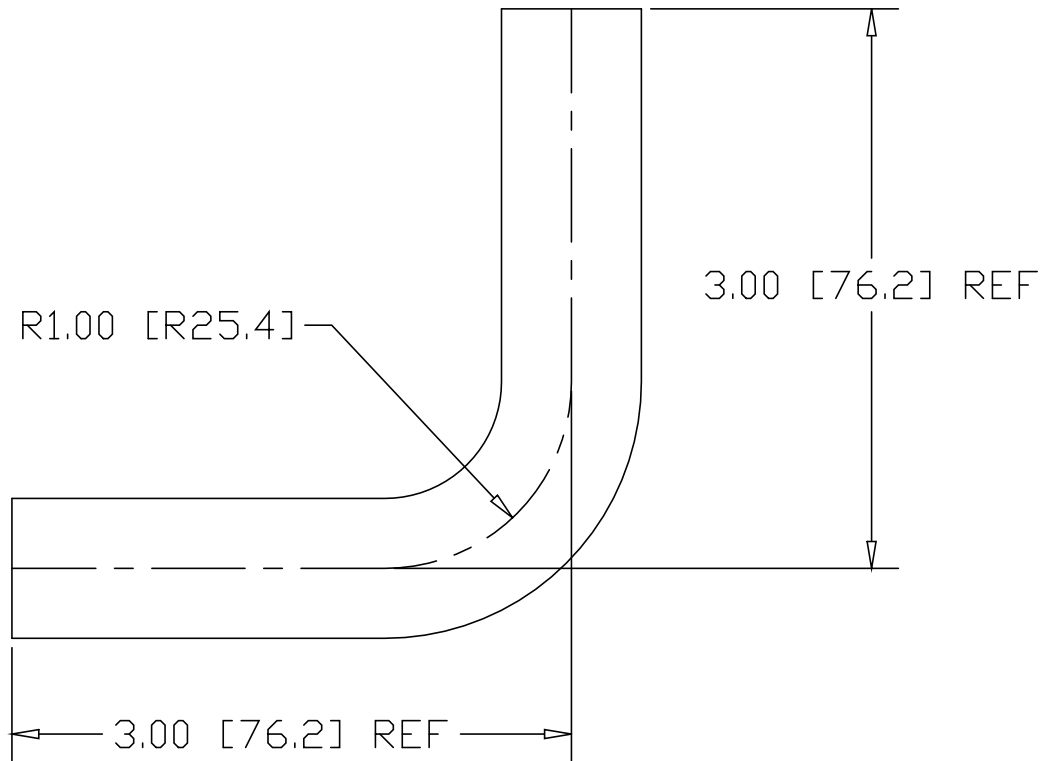
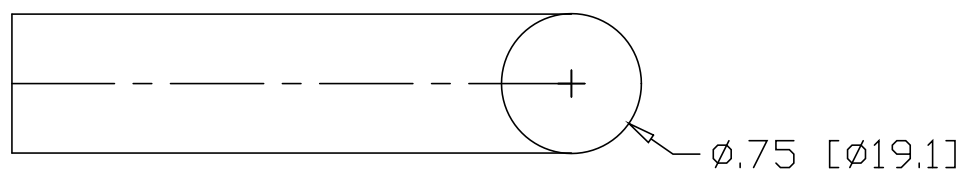


REV  
A  
SH  
R170  
DWG NO


REVISIONS			
REV	DESCRIPTION	DATE	APPROVED
A	CLR WAS 1.50	10/20/03	RJF



NOTE: ENDS UNTRIMMED

INCHES [MILLIMETERS]

ALTERNATE MATERIAL	PART NUMBER
3/4" $\phi$ 304 STAINLESS STEEL BAR	R180
3/4" $\phi$ 6063 ALUMINUM BAR	R260
3/4" $\phi$ 360 BRASS BAR	R190
3/4" $\phi$ 385 ARCH BRONZE BAR	R230

PART NAME		3/4" $\phi$ BAR BEND	
MATERIAL		3/4" $\phi$ COLD ROLLED STEEL BAR	
DATE	11/20/98	 <b>THE WAGNER COMPANIES</b> R & B WAGNER, INC. AND J. G. BRAUN CO.	
DRAWN BY	RJF		
FINISH	MILL		
SIZE	A	WEIGHT	.71 LBS
PART NUMBER		R170	
REV		A	